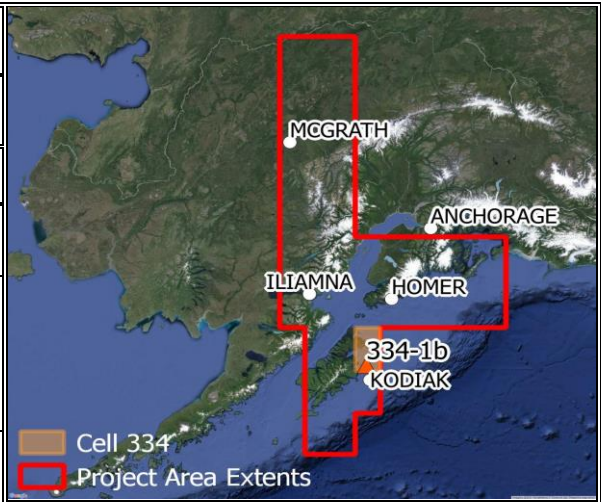




SDMI QA/QC DATA POINT - 334-1b

Site Identification			
Designation:	334-1b	Cell:	334
Type:	Bare Earth	Stamping:	not applicable
Geodetic and Projected Coordinates			
Reference Frame:	NAD83(CORS96)	Epoch:	2003.0000
Solution type:	OPUS-S	<i>Uncertainties are peak-to-peak</i>	
Latitude (N):	58° 08' 17.06883"	±	0.010 m
Longitude (W):	152° 33' 02.87133"	±	0.009 m
Ellipsoid Ht. (m):	20.647	±	0.006 m
NAVD 88 Ht. (m):	10.504	±	0.013 m
GEOID09 [NGS] (m):	10.143		
Projection:	Alaska Albers		
Northing (m):	905077.850		
Easting (m):	85095.319		



Overview Map - Cell Location

GPS Session and Processing Information

Receiver Type:	Topcon Hiper V	GPS Ephemeris file:	igs18565.eph [precise]
Antenna Type:	TPSHIPER_V	OPUS Software version:	page5 1209.04 master50.pl 022814
No. of sessions:	1	Fixed Ambiguities:	97%
Length of session(s):	2.08 hrs.	Observations Used:	89%
UTC Start date(s):	08/07/2015 21:27	Overall RMS (m):	0.012

Location Map - Point Location





Check Point: 334-1b **Photo Date:** 8/7/2015
View: North

Notes: none



Check Point: 334-1b **Photo Date:** 8/7/2015
View: East

Notes: none



Check Point: 334-1b **Photo Date:** 8/7/2015
View: South

Notes: none



Check Point: 334-1b **Photo Date:** 8/7/2015
View: West

Notes: none