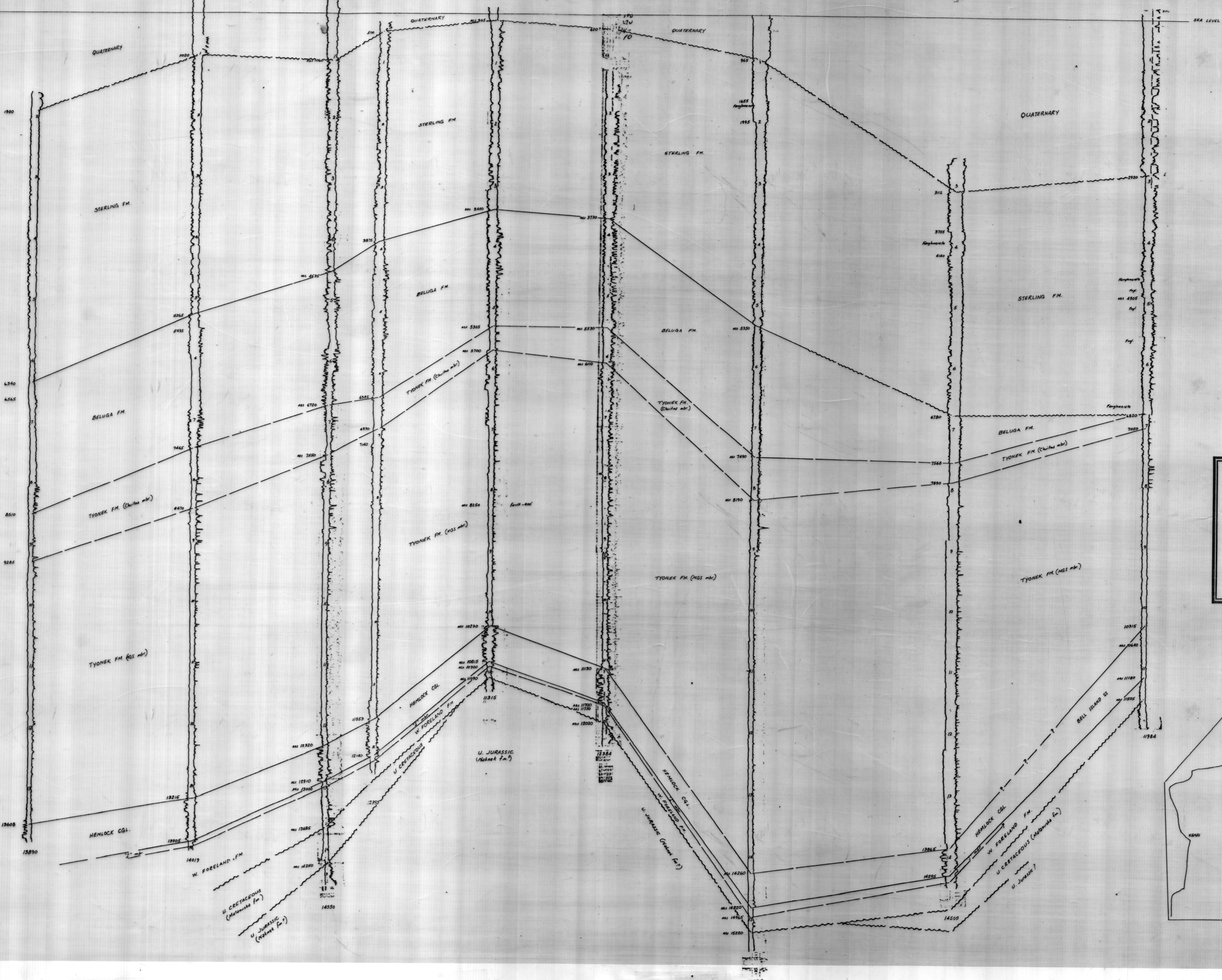


TRINITY Homesteaders 1      HALBOUYT King 1-B      STANDARD S.C.U. 22-32      STANDARD Mink Creek 14-20      STANDARD S.C.U. 41-4      STANDARD S.R.U. 34-10      STANDARD Birch Hill 22-25      FOREST Sunrise Lake 1      STANDARD Swan Lake 34-27



STATE OF ALASKA  
 DEPARTMENT OF NATURAL RESOURCES  
 DIVISION OF GEOLOGICAL SURVEY

STRATIGRAPHIC CORRELATION SECTION AA'  
 NORTHERN KENAI PENINSULA

**PRELIMINARY REPORT**

D. C. Hartman, G. H. Pessel & D. L. McGee  
 NOV. 1971

SCALE: HORIZONTAL 1" = 1 MILE, VERTICAL 1" = 500 FT.

