

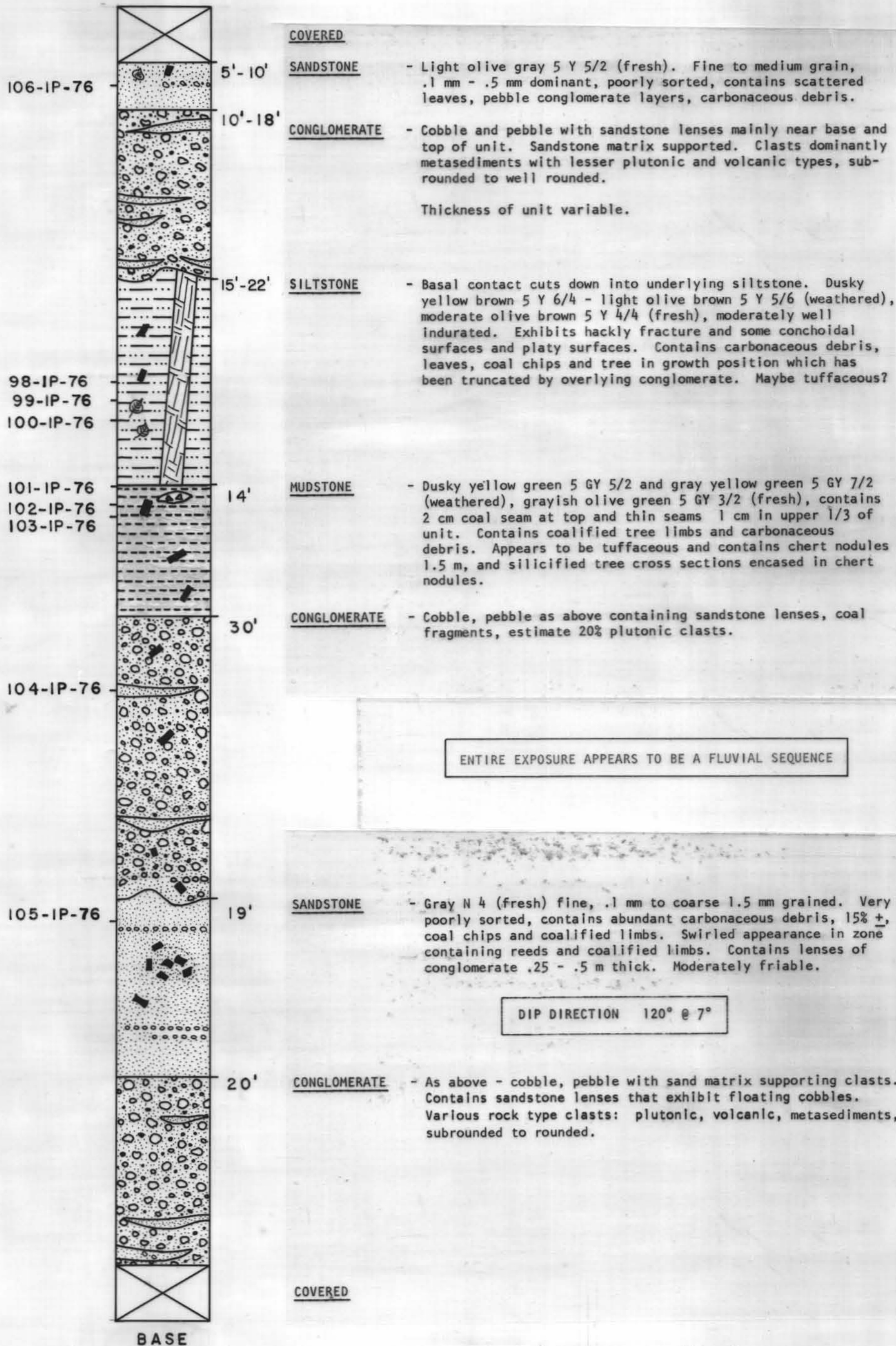
# EAST GLACIER CREEK I STRATIGRAPHIC SECTION

Sec. 28, T3S, R21W, SM.

JUNE, 1976

MEASURED BY: W.LYLE  
I.PALMER

TERRAIRY  
K E N A I G R O U P  
WEST FORELAND FORMATION



Age	Environments
Porosity %	Permeability md.
13.0	1.69
9.0	0.37
10.1	0.96

ENTIRE EXPOSURE APPEARS TO BE A FLUVIAL SEQUENCE

DIP DIRECTION 120° @ 7°

VERTICAL SCALE: 1" = 10'