

X-Ray Diffraction Clay Analysis of Shell Western E & P Inc. Middle  
Ground Shoal (MGS) A-33-11 Well

12 November 1986

Total of 7 pages in report

Geologic Materials Center Data Report 65

X-RAY DIFFRACTION ANALYSIS

SUBMITTED BY: RM SHAVER

REQUEST NO.: BRC 36670

SAMPLE DESIGNATION: WELL A33-11  
MIDDLE GROUND SHOAL FIELD  
ALASKA

DATE: 9/24/86

WEIGHT PER CENT IN CRYSTALLINE PORTION

CRYSTALLINE COMPONENTS	SAMPLE NUMBER OR DEPTH		
	8606'	8611.3'	8626'
SMEC.(40)/ILL.(60)*	34	46	43
ILLITE	35	26	36
KAOLINITE	27	25	16
CHLORITE	4	3	5

\* A MIXED-LAYER CLAY WITH PERCENTAGES OF EACH LAYER TYPE IN PARENTHESES.

\*\*\*\*\* WARNING \*\*\*\*\*  
THIS ANALYSIS COVERS ONLY CLAY PARTICLES IN THE SIZE RANGE 0.26-4.7 MICRONS.  
SINCE CLAY PARTICLES IN THE SAMPLE MAY FALL OUTSIDE THIS SIZE RANGE, THESE  
RESULTS ARE NOT NECESSARILY COMPARABLE WITH THE BULK ANALYSIS.  
\*\*\*\*\*

RECEIVED  
NOV 12 1986  
*John Boyle*  
Alaska Oil & Gas Cons. Commission  
Anchorage

BULK

X-RAY DIFFRACTION ANALYSIS

SUBMITTED BY: RM SHAVER

REQUEST NO.: BRC 36670

SAMPLE DESIGNATION: WELL A33-11  
MIDDLE GROUND SHOAL FIELD  
ALASKA

DATE: 9/24/86

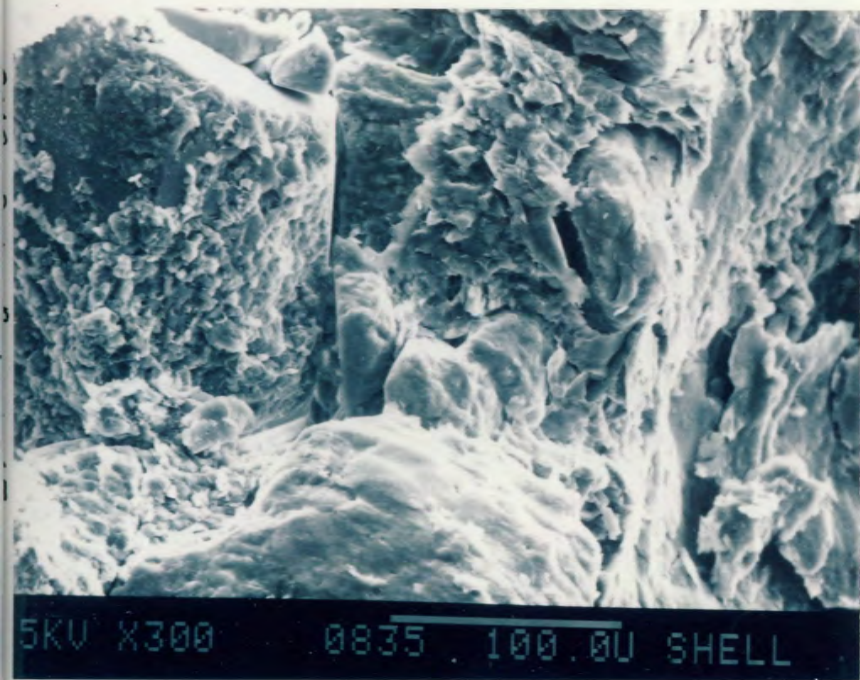
WEIGHT PER CENT IN CRYSTALLINE PORTION

CRYSTALLINE COMPONENTS	SAMPLE NUMBER OR DEPTH		
	8606'	8611.3'	8626'
SMEC.(40)/ILL.(60)*	5	9	9
ILLITE	15	12	13
KAOLINITE	8	8	5
CHLORITE	1	1	1
K FELDSPAR	7	5	3
NA FELDSPAR	11	9	8
QUARTZ	53	56	61

\* A MIXED-LAYER CLAY WITH PERCENTAGES OF EACH LAYER TYPE IN PARENTHESES.

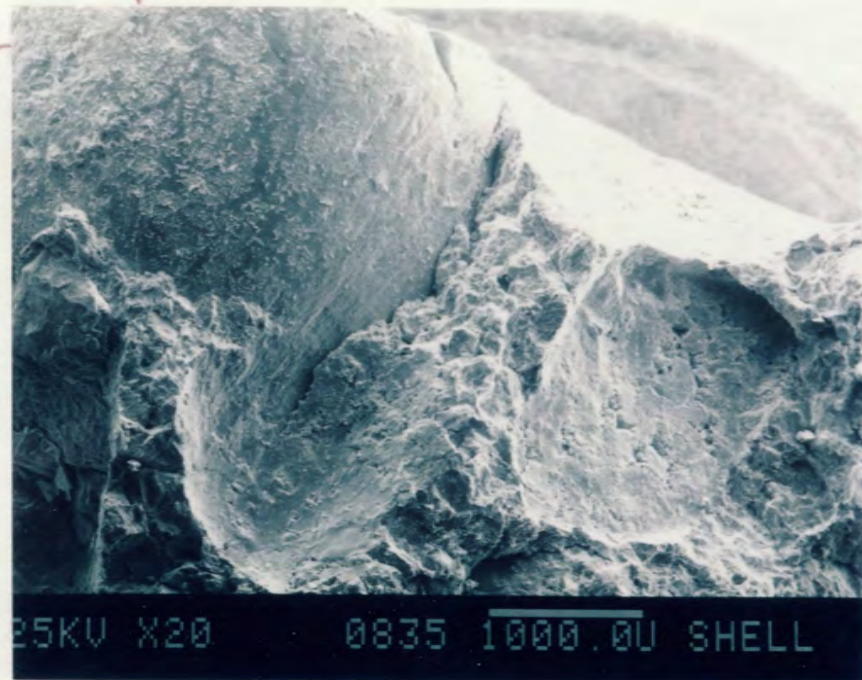
NOTE: SAMPLES CONTAIN AMORPHOUS MATERIAL.

*John Boyce*  
**RECEIVED**  
NOV 12 1986  
Alaska Oil & Gas Cons. Commission  
Anchorage



8605-061

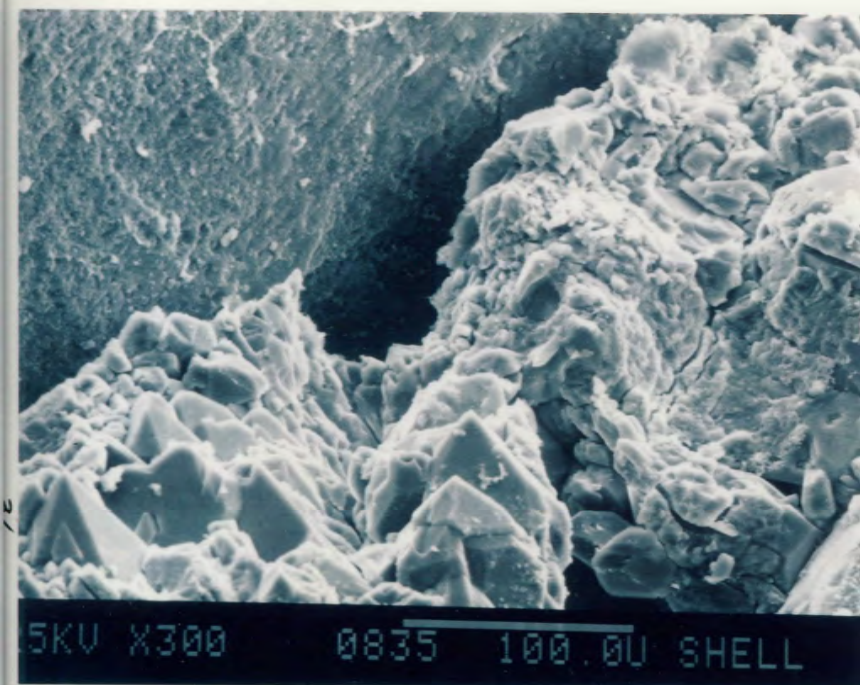
1



3

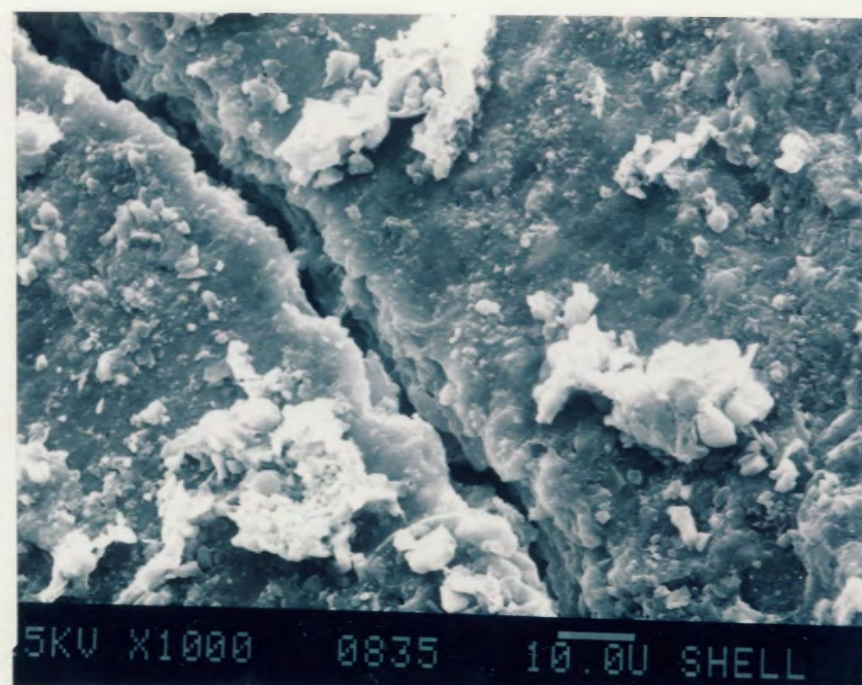
8605-061

2



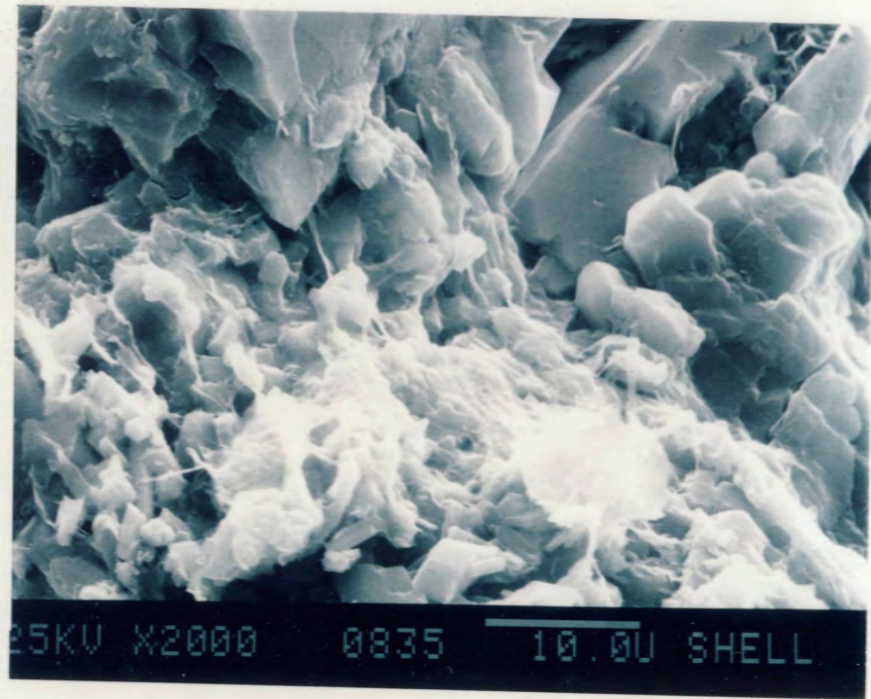
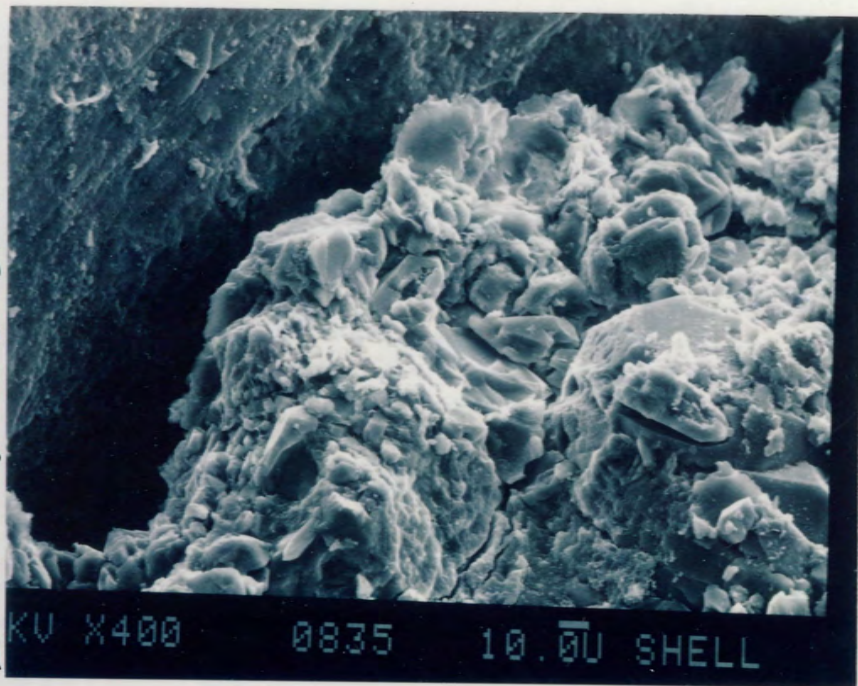
8605-061

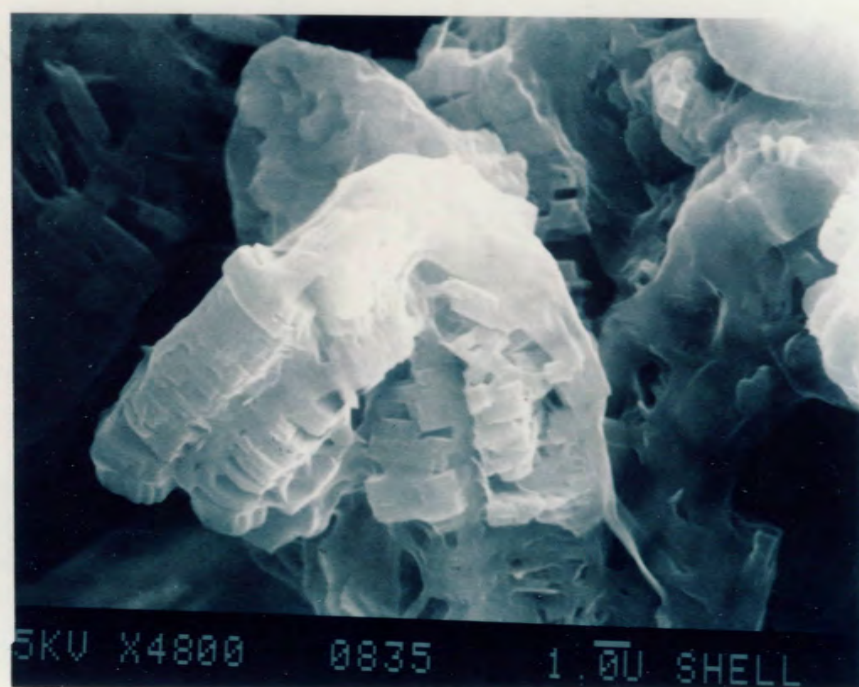
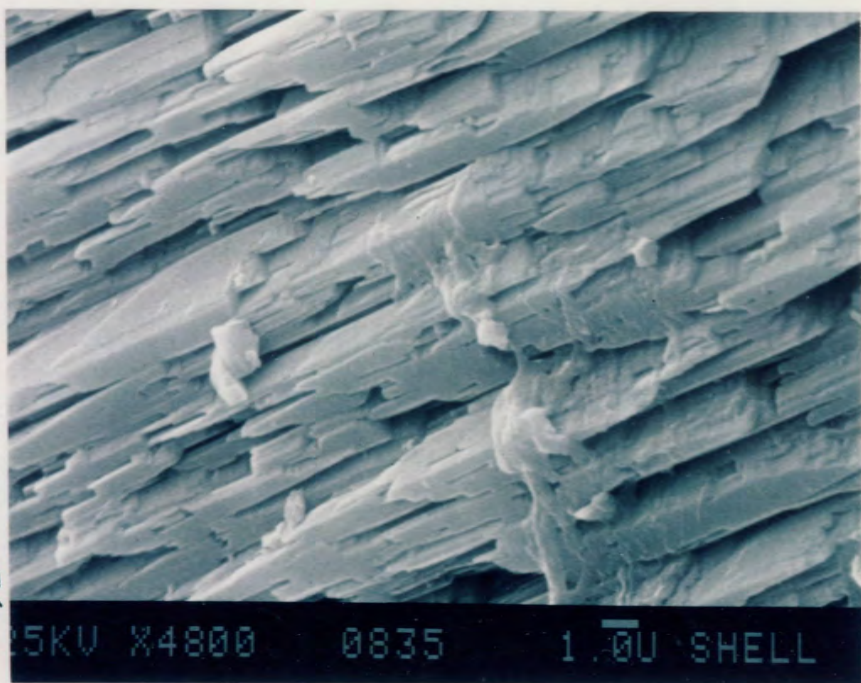
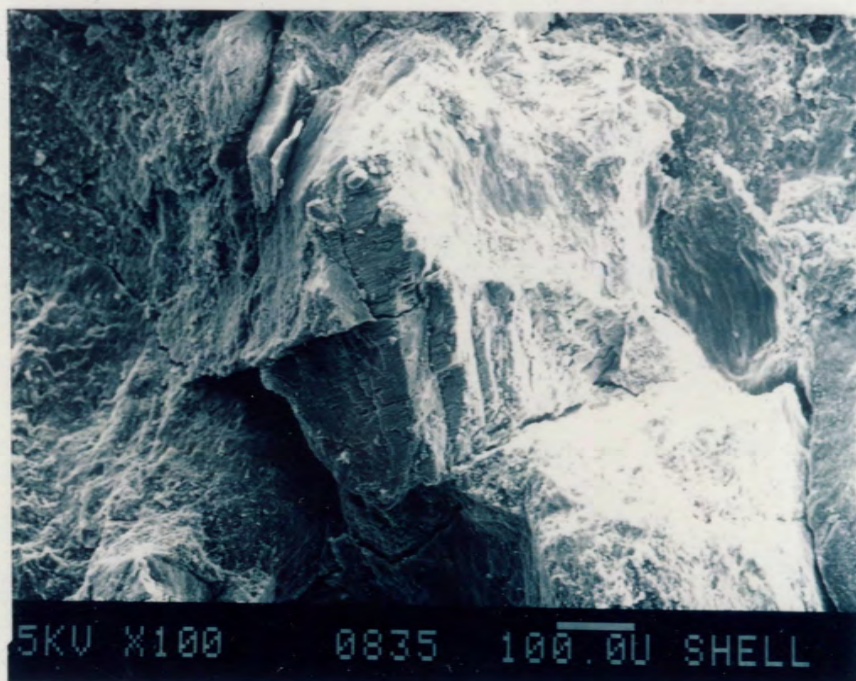
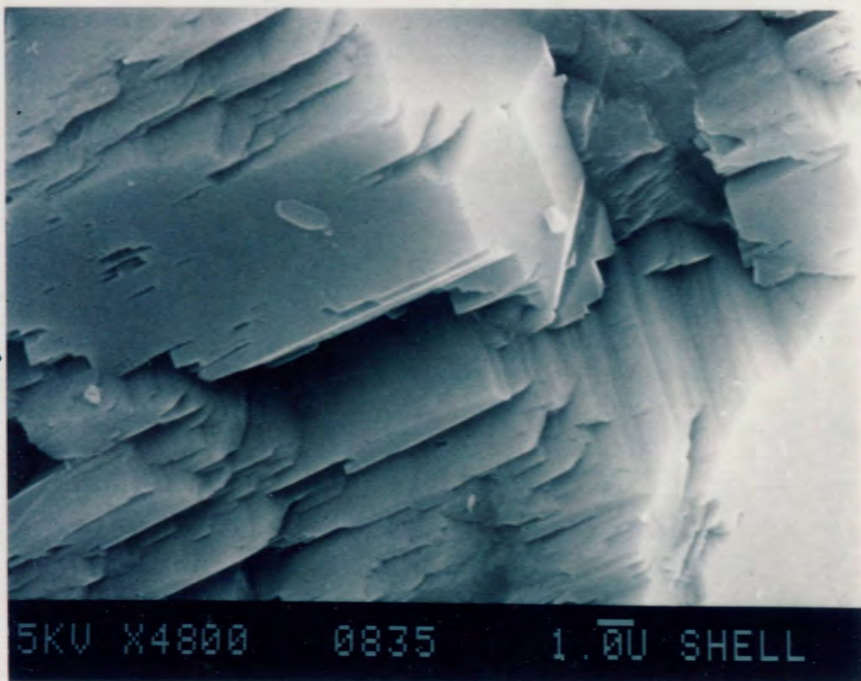
2



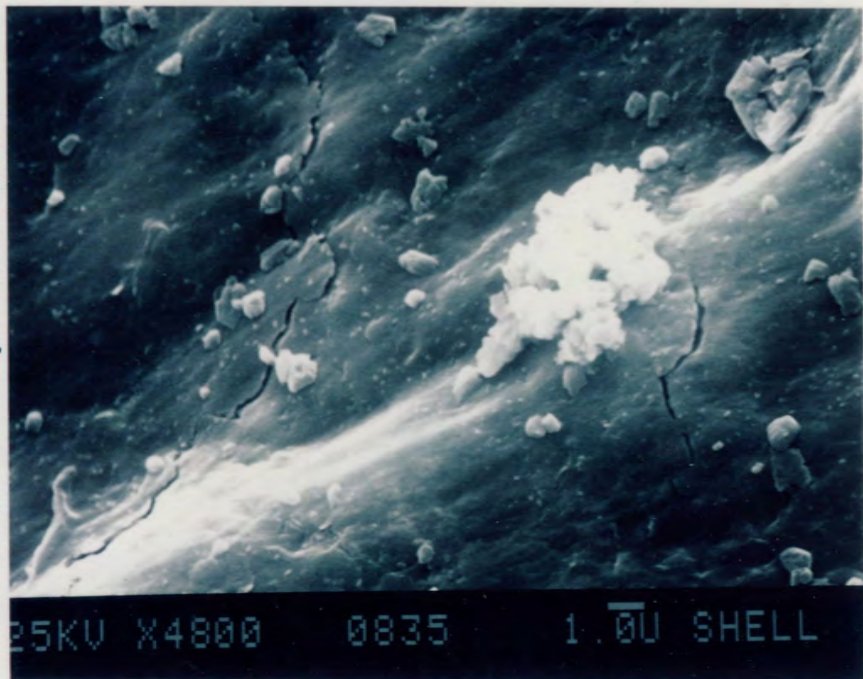
8605-061

3

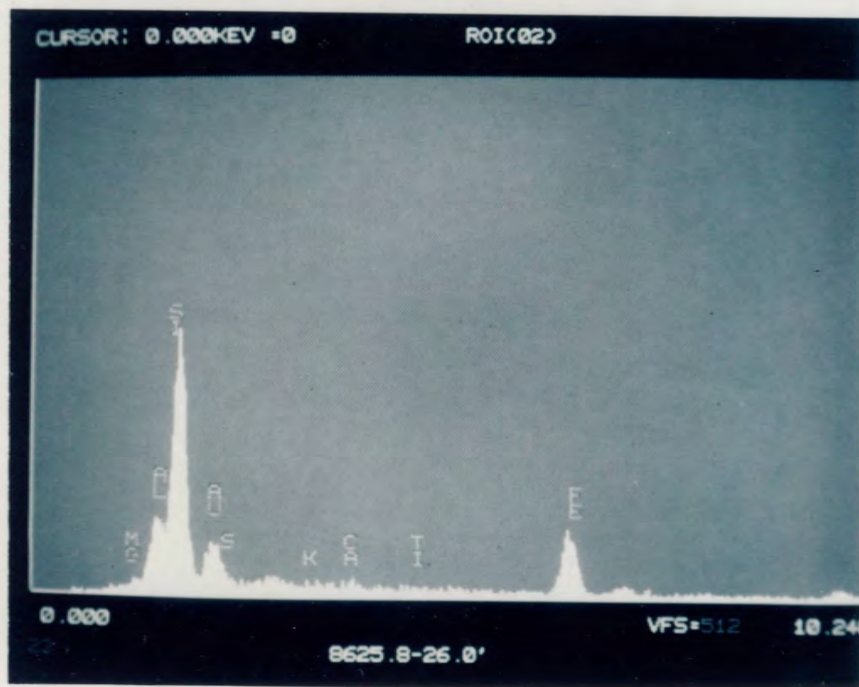




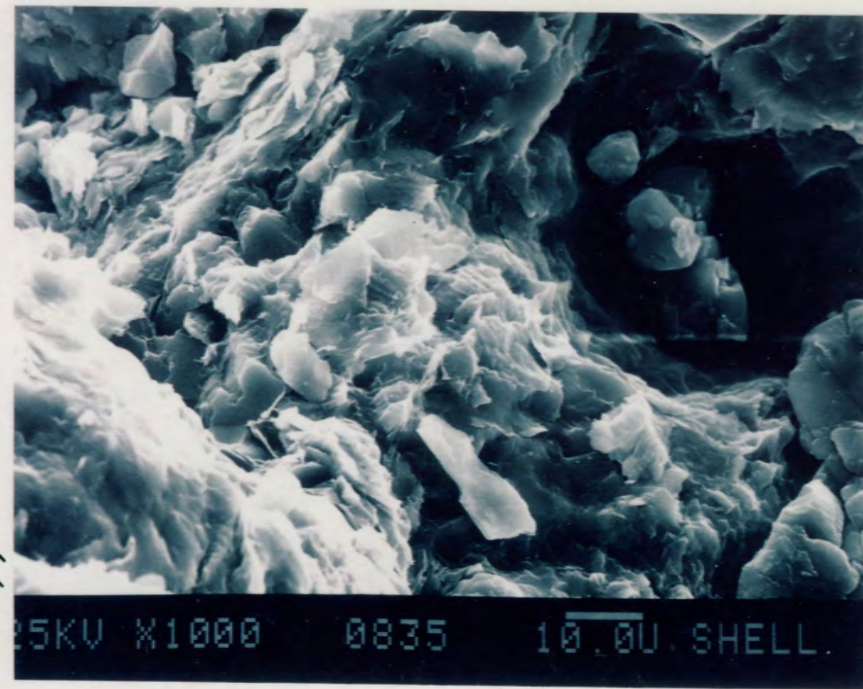
GMC Data Report 65



8625.8-  
26.0'

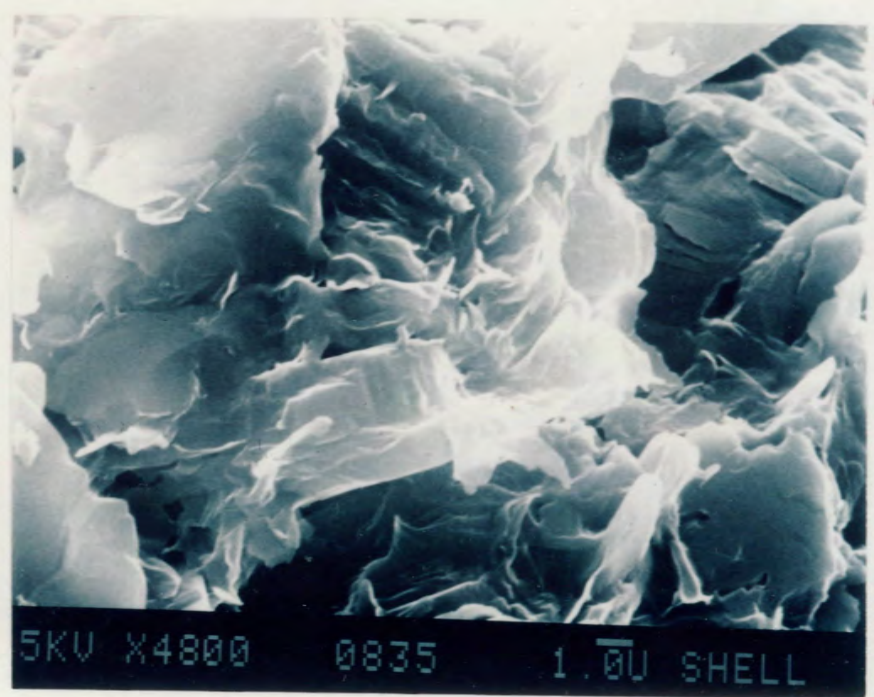


6/9



8625.8-  
26.0'

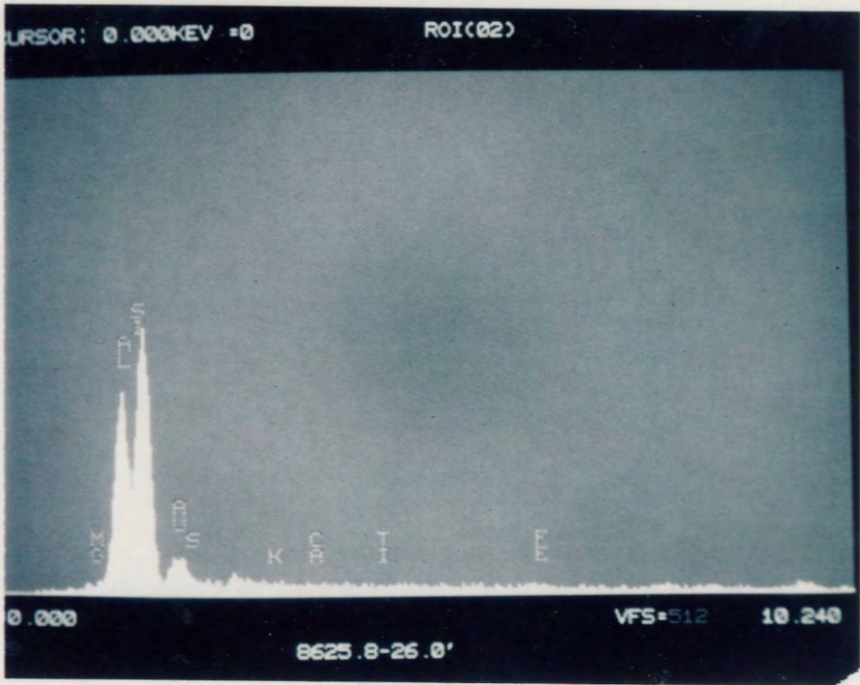
2



8625.8-  
26.0'

2

GME Data Report 65



7/2