

Hydrocarbon extraction gas chromatograph evaluation from cuttings and core chips (13,760'-13,820') of Union Oil Company of California Clam Gulch Unit No. 1.



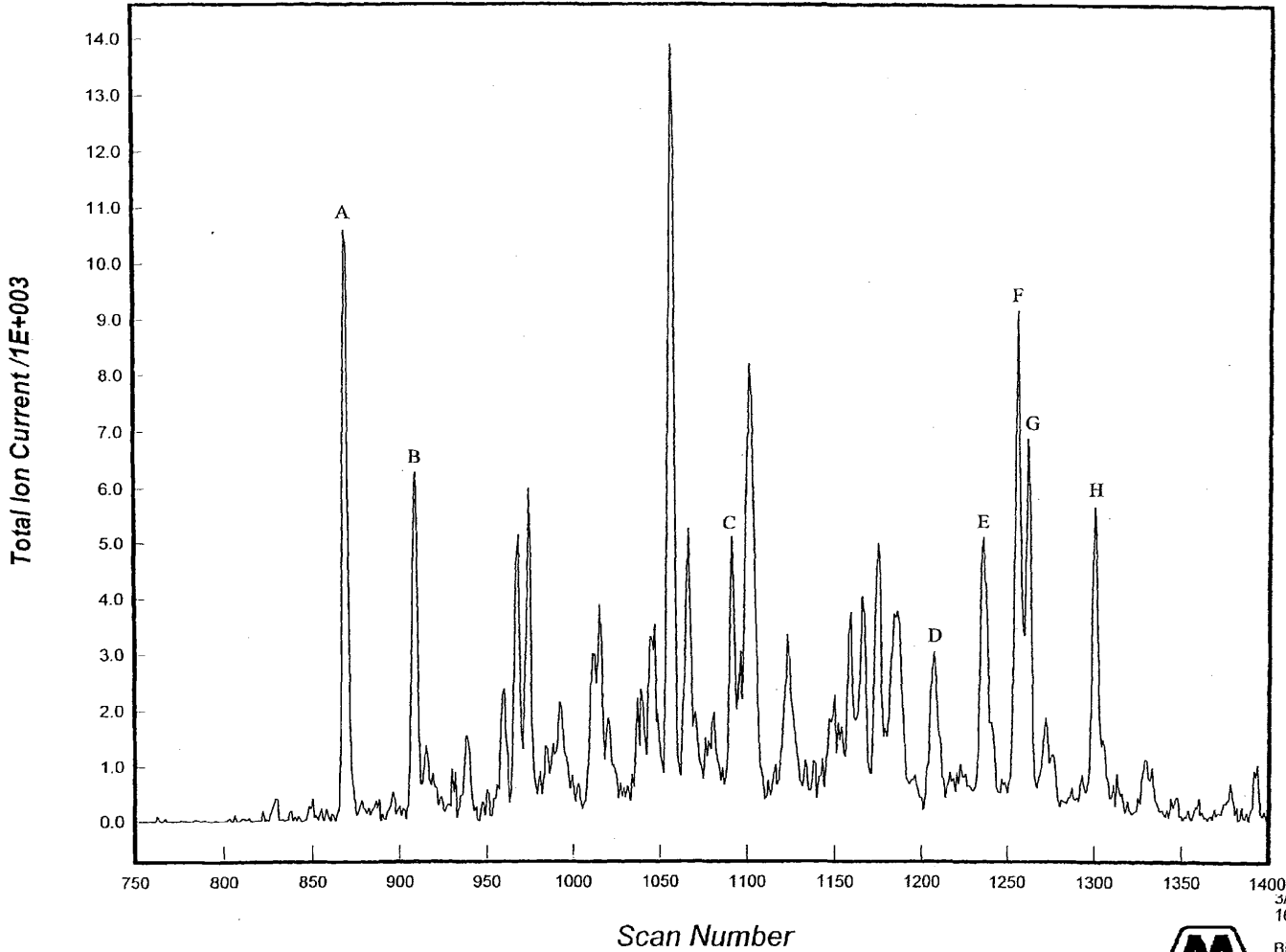
Created 25 March 2000.

Total of 10 pages in report.

Alaska Geologic Materials Center Data Report No. 292

Unocal Clam Gulch 1, 13809-20 ft, Pentane Soluble Core Extract
C27-C30 Sterane Distribution m/e 217

O:\EDMAN\GCMSDATA\Aucg8s#1



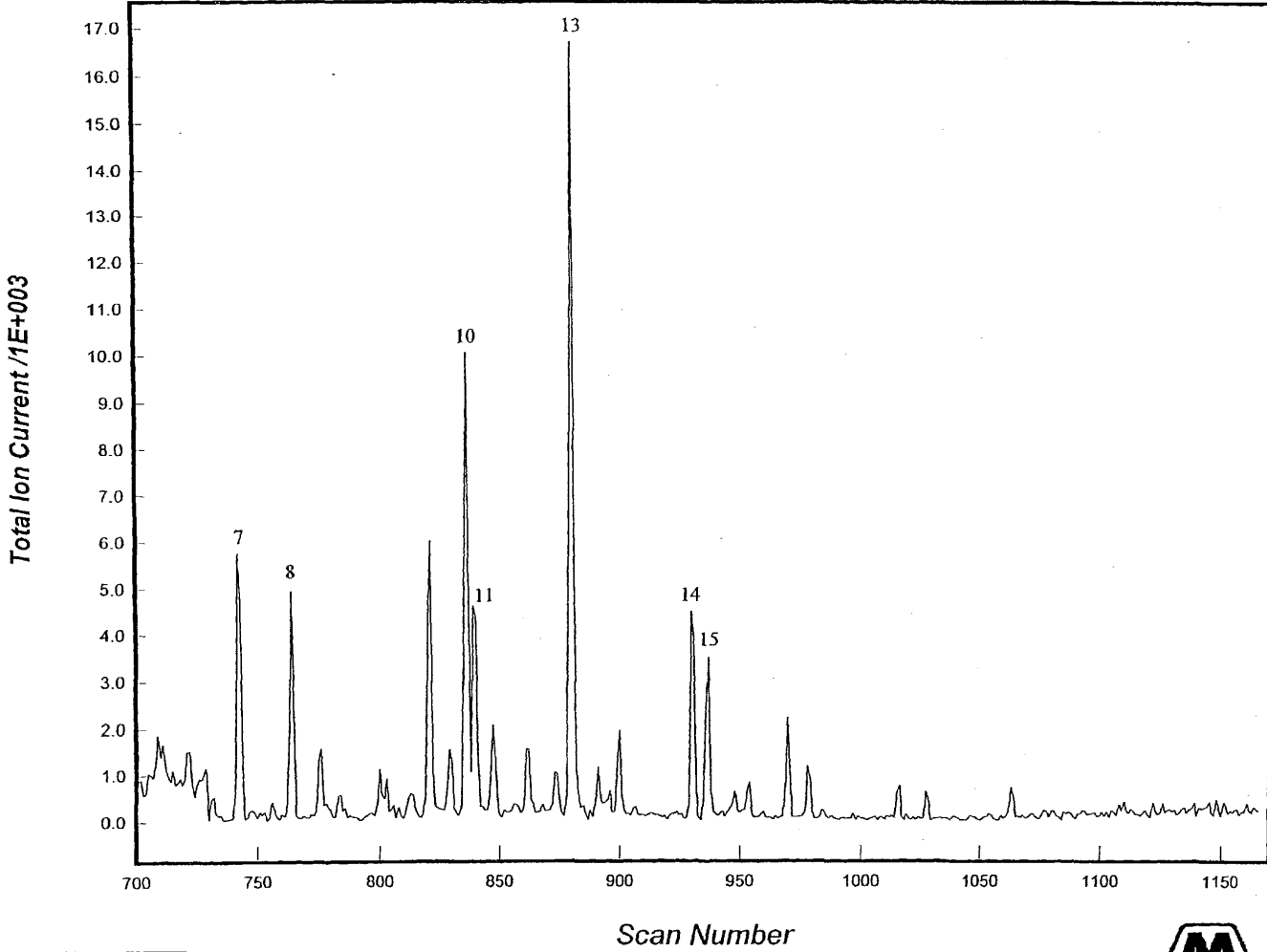
LEGEND
△ AUCG8s0001



3/10/100
16:12:59
Bioplot Windows Applic

Unocal Clam Gulch 1, 13809-20 ft, Pentane Soluble Core Extract
C27-C35 Terpane Distribution m/e 191

O:\EDMAN\GCMSDATA\Aucg8h#2



LEGEND
△ AUCG8h0002

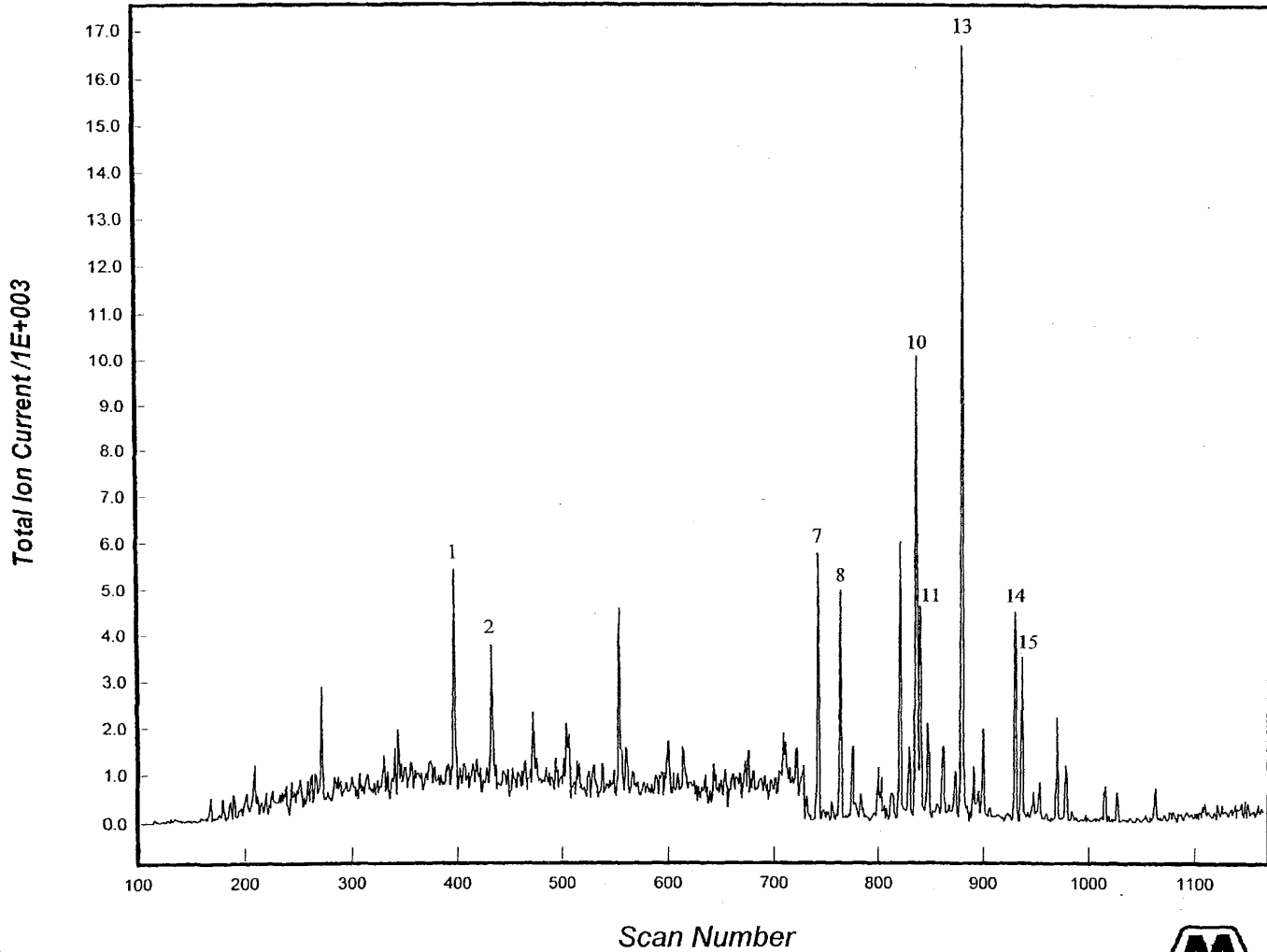


3/17/100
13:59:35

Biplot Windows Applic

Unocal Clam Gulch 1, 13809-20 ft, Pentane Soluble Core Extract
C20-C35 Terpane Distribution m/e 191

O:\EDMAN\GCMSSDATA\Aucg8h#2



LEGEND
△ AUCG8h0002

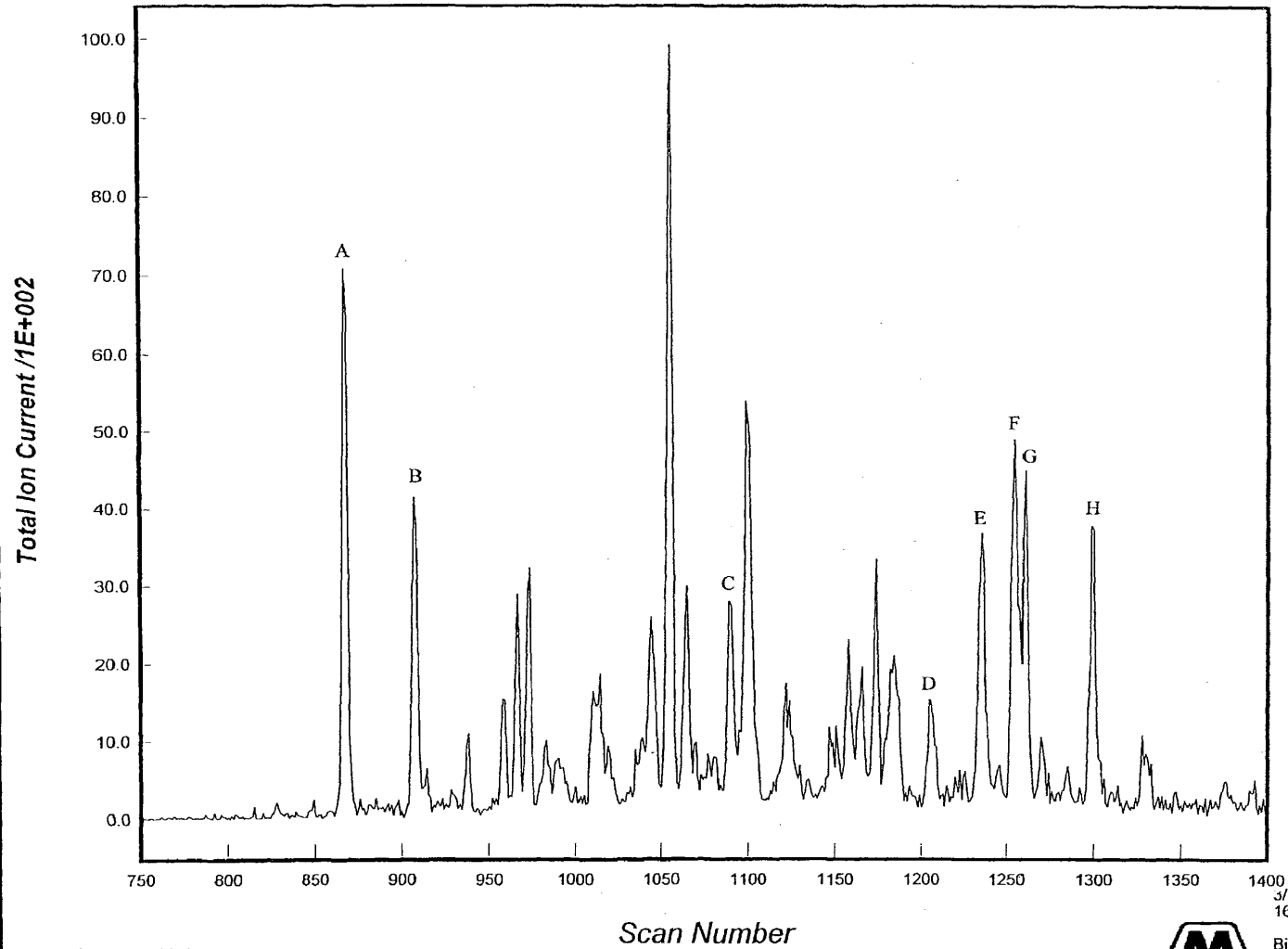


3/17/100
13:43:49

Bioplot Windows Applic

Unocal Clam Gulch 1, 13760-90 ft, Pentane Soluble Core Extract
C27-C30 Sterane Distribution m/e 217

O:\EDMAN\GCMSSDATA\Aucg7s#4



LEGEND
△ AUCG7s0004

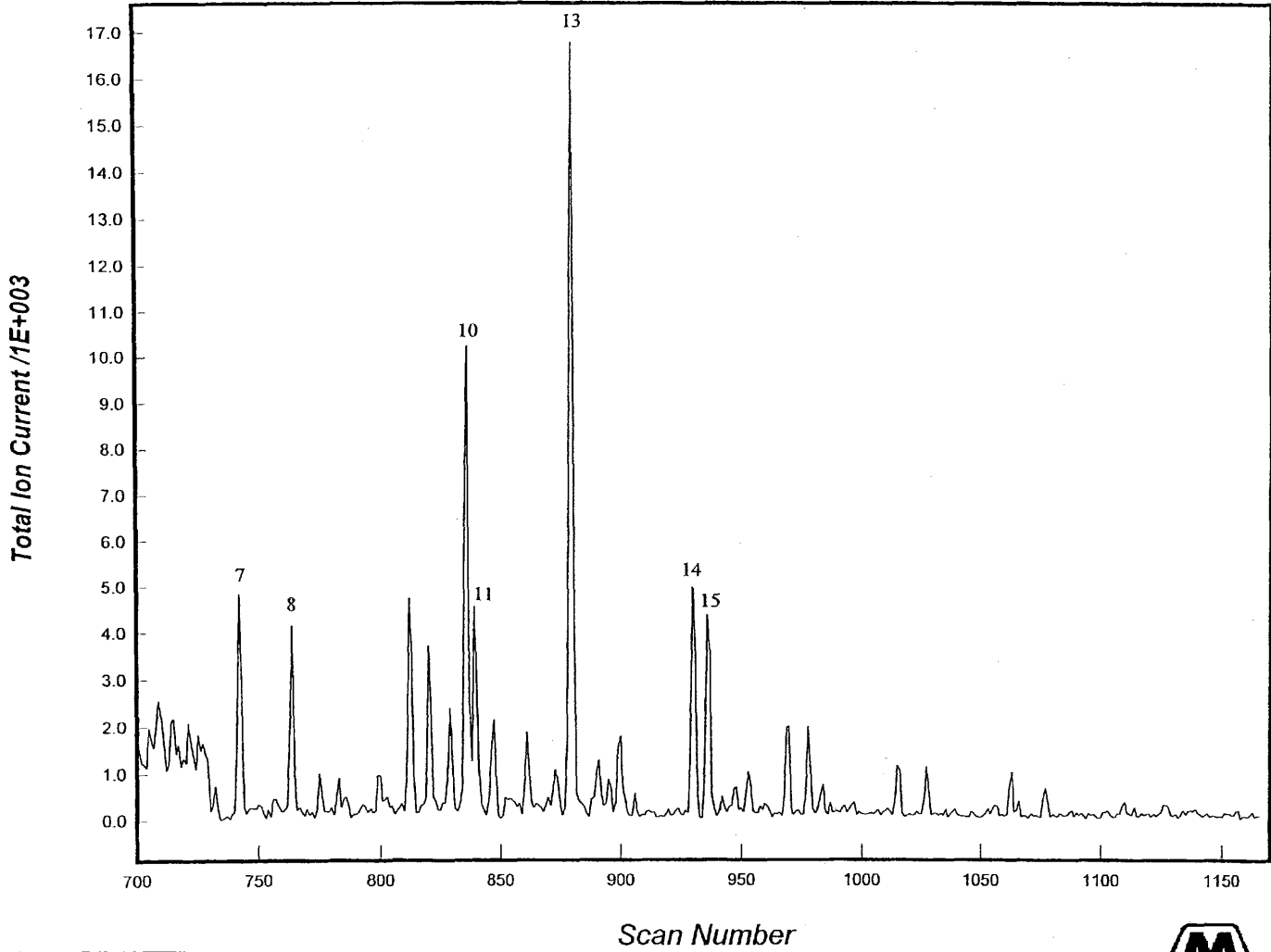


3/10/100
16:21:22

Biplot Windows Applic

Unocal Clam Gulch 1, 13760-90 ft, Pentane Soluble Core Extract
C27-C35 Terpane Distribution m/e 191

O:\EDMAN\GCM\SDATA\Aucg7h#2



LEGEND
△ AUCG7h0002

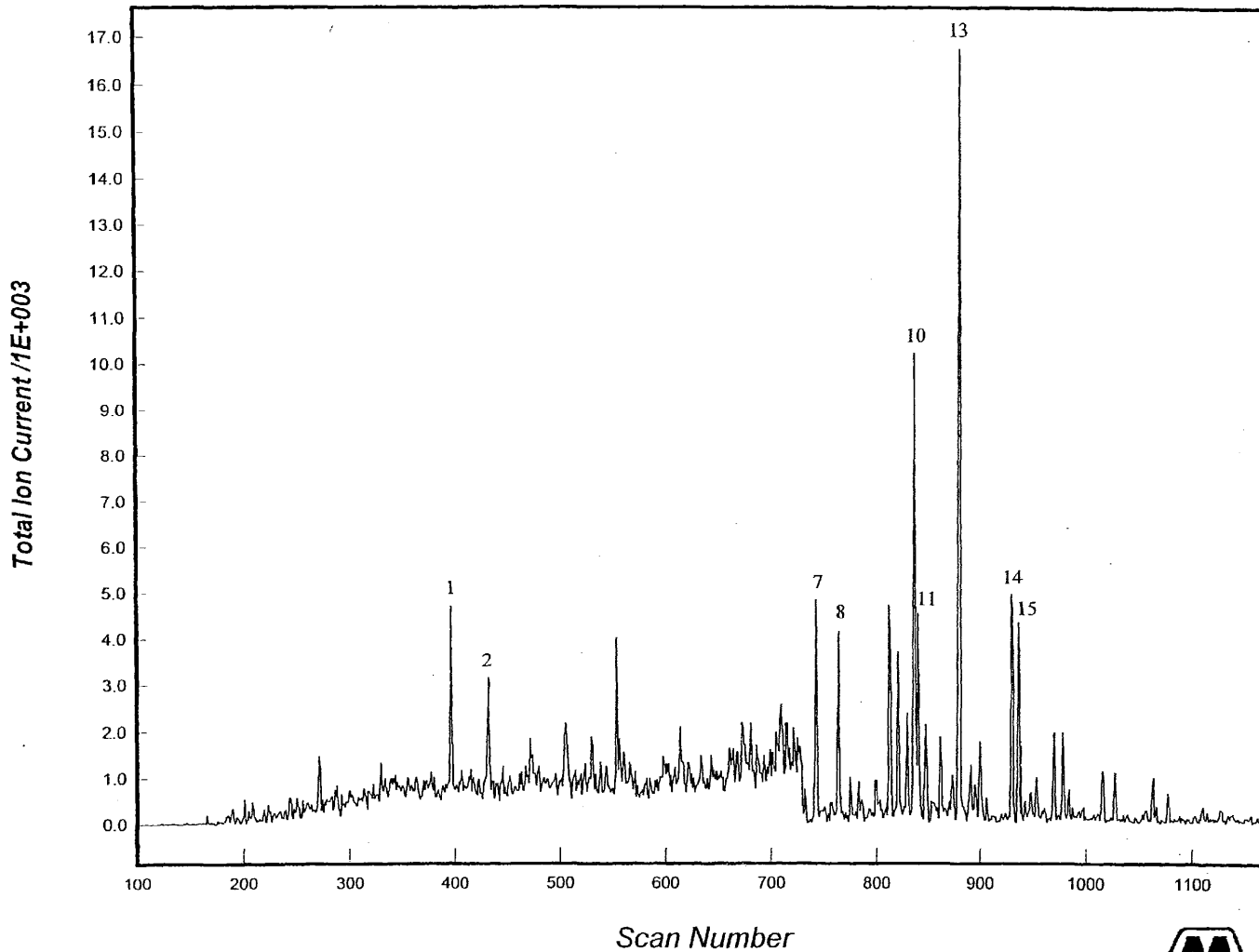


3/17/100
13:21:49

Bioplot Windows Applic

Unocal Clam Gulch 1, 13760-90 ft, Pentane Soluble Core Extract
C20-C35 Terpane Distribution m/e 191

O:\EDMAN\GCMSDATA\Aucg7h#2



LEGEND
△ AUCG7h0002

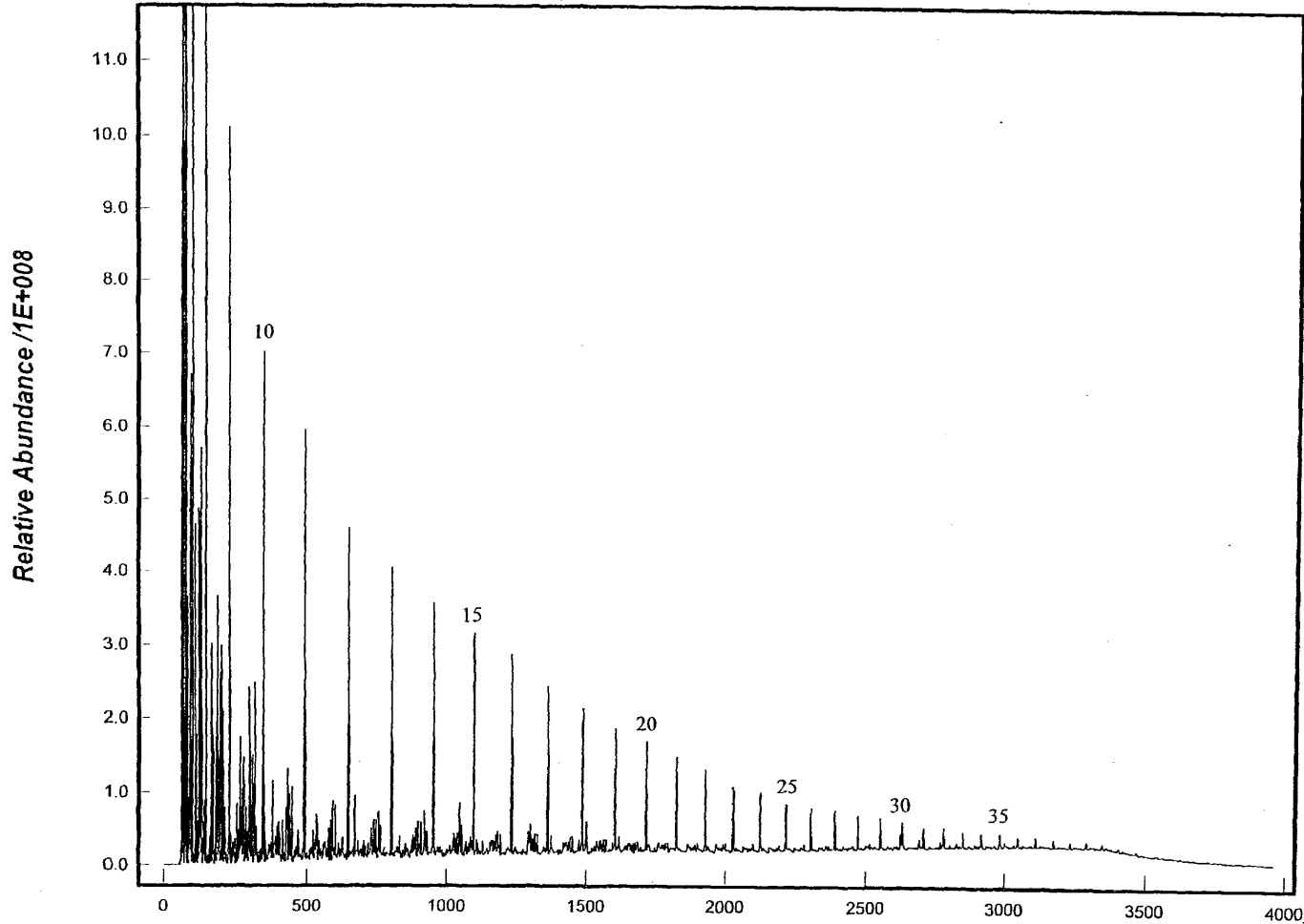


3/10/100
13:34:55

Biplot Windows Applic

Whole Oil Gas Chromatogram
Arab Medium Standard

N:\Analytic\GeoChem\AIA_Data\Ckstd1.rax



LEGEND
△ Arab Med

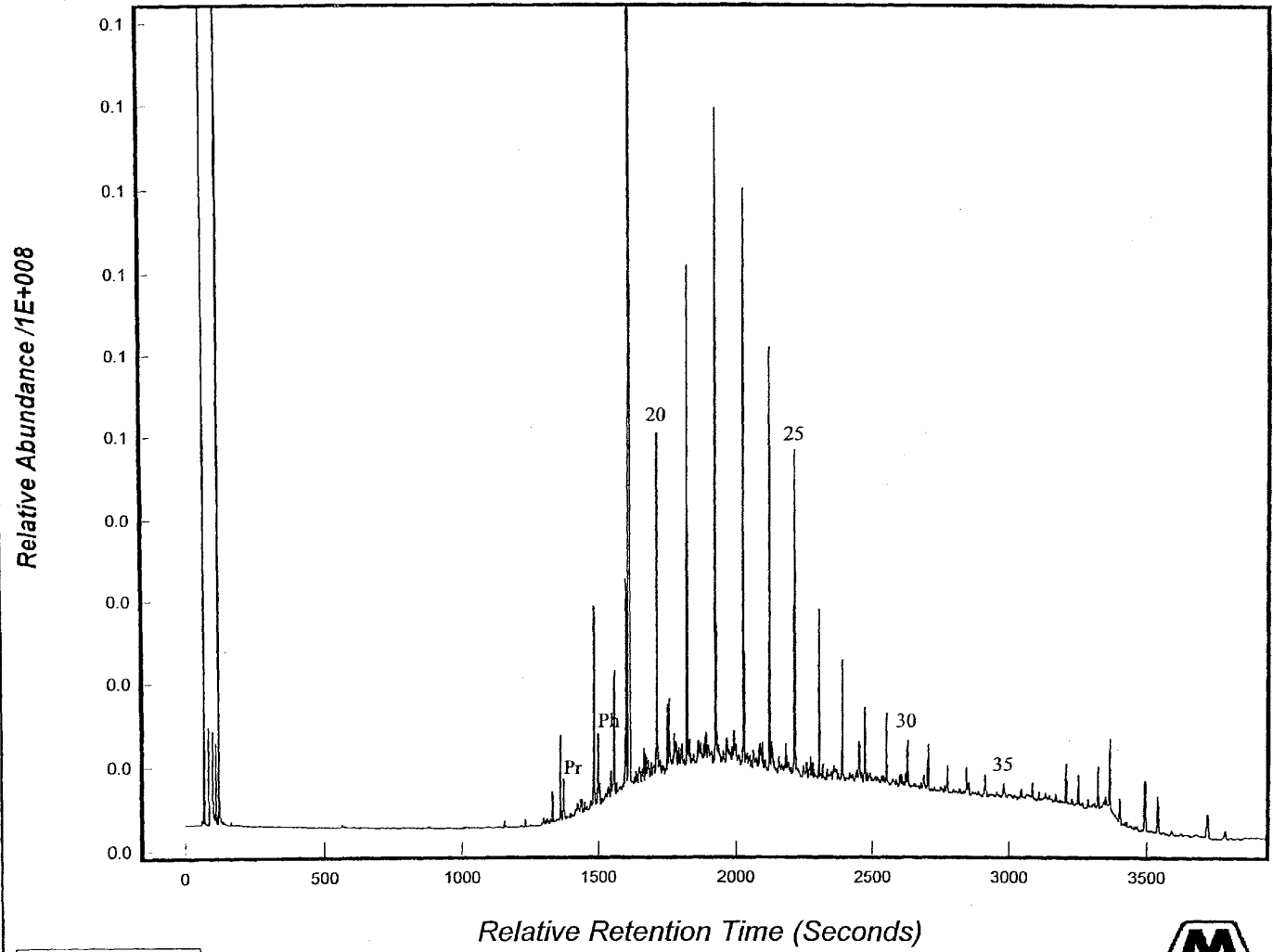


3/17/100
14:32:49

Bioplot Windows Applic

Whole Oil Gas Chromatogram
Unocal Clam Gulch 1, 13809-20 ft, Pentane Soluble Core Extract

N:\Analytic\GeoChem\AIA_Data\13809-20.rax



LEGEND
△ CG 13809-20

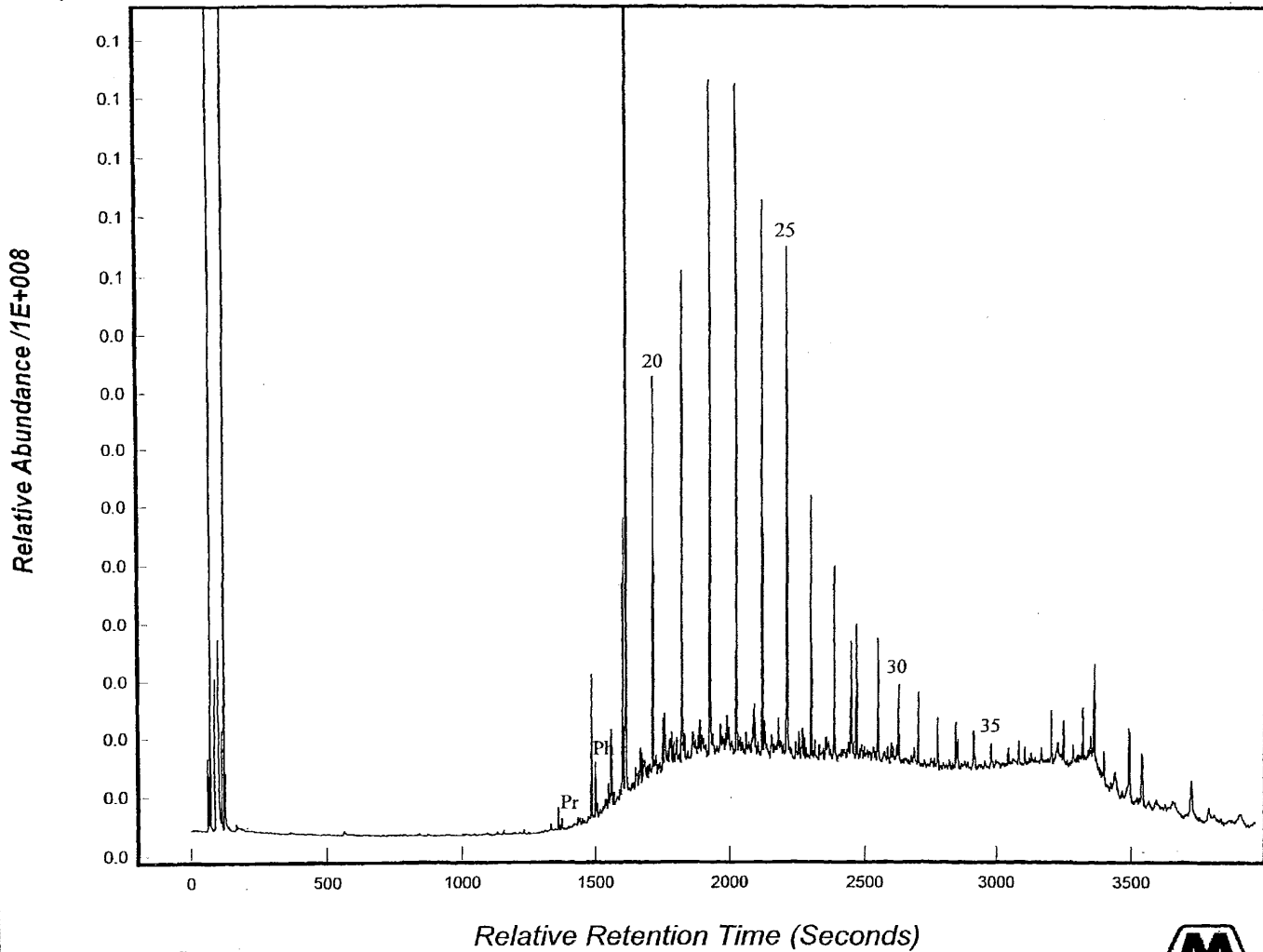


3/17/100
14:24:59

Bioplot Windows Applic

Whole Oil Gas Chromatogram
Unocal Clam Gulch 1, 13760-90 ft, Pentane Soluble Core Extract

N:\Analytic\GeoChem\WIA_Data\13760-90.rax



LEGEND
△ CG 13760-90



3/17/100
14:15:25

Biplot Windows Applic

Key to Labels on the Saturate Fraction Gas Chromatograms

15	n-C ₁₅ alkane
Pr	Pristane
Ph	Phytane
20	n-C ₂₀ alkane
25	n-C ₂₅ alkane
30	n-C ₃₀ alkane

Key to Labels on the Terpane Mass Chromatograms

1	C ₂₃	Tricyclic
2	C ₂₄	Tricyclic
3	C ₂₅	Tricyclic
4	C ₂₆	Tricyclic
5	C ₂₈	Tricyclics
6	C ₂₉	Tricyclics
7	C ₂₇	18 α H, 21 β H Trisnorhopane (Ts)
8	C ₂₇	17 α H, 21 β H Trisnorhopane (Tm)
9	C ₂₈	17 α H, 21 β H Bisnorhopane
10	C ₂₉	17 α H, 21 β H Norhopane
11	C ₂₉	18 α H,-30-Norneohopane (C ₂₉ Ts)
12	C ₃₀	18 α H Oleanane
13	C ₃₀	17 α H, 21 β H Hopane
14	C ₃₁	17 α H, 21 β H Homohopane (22S)
15	C ₃₁	17 α H, 21 β H Homohopane (22R)
16	C ₃₀	Gammacerane

Key to Labels on the Sterane Mass Chromatograms

A	C ₂₇	13 β H, 17 α H Diacholestane (20S)
B	C ₂₇	13 β H, 17 α H Diacholestane (20R)
C	C ₂₇	5 α H, 14 α H, 17 α H Cholestane (20R)
D	C ₂₈	24 methyl-5 α H, 14 α H, 17 α H Cholestane (20R)
E	C ₂₉	24 ethyl-5 α H, 14 α H, 17 α H Cholestane (20S)
F	C ₂₉	24 ethyl-5 α H, 14 β H, 17 β H Cholestane (20R)
G	C ₂₉	24 ethyl-5 α H, 14 β H, 17 β H Cholestane (20S)
H	C ₂₉	24 ethyl-5 α H, 14 α H, 17 α H Cholestane (20R)