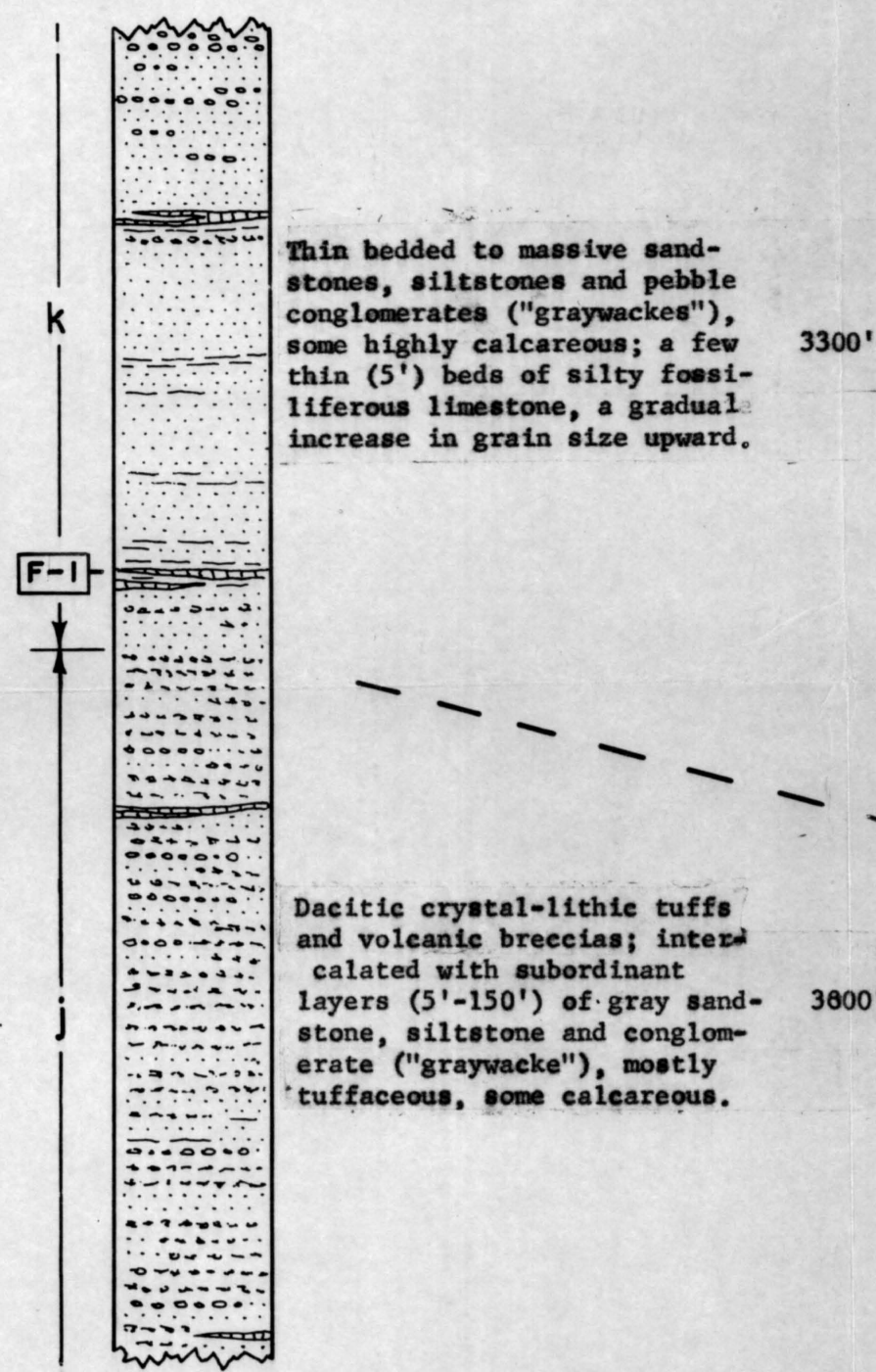
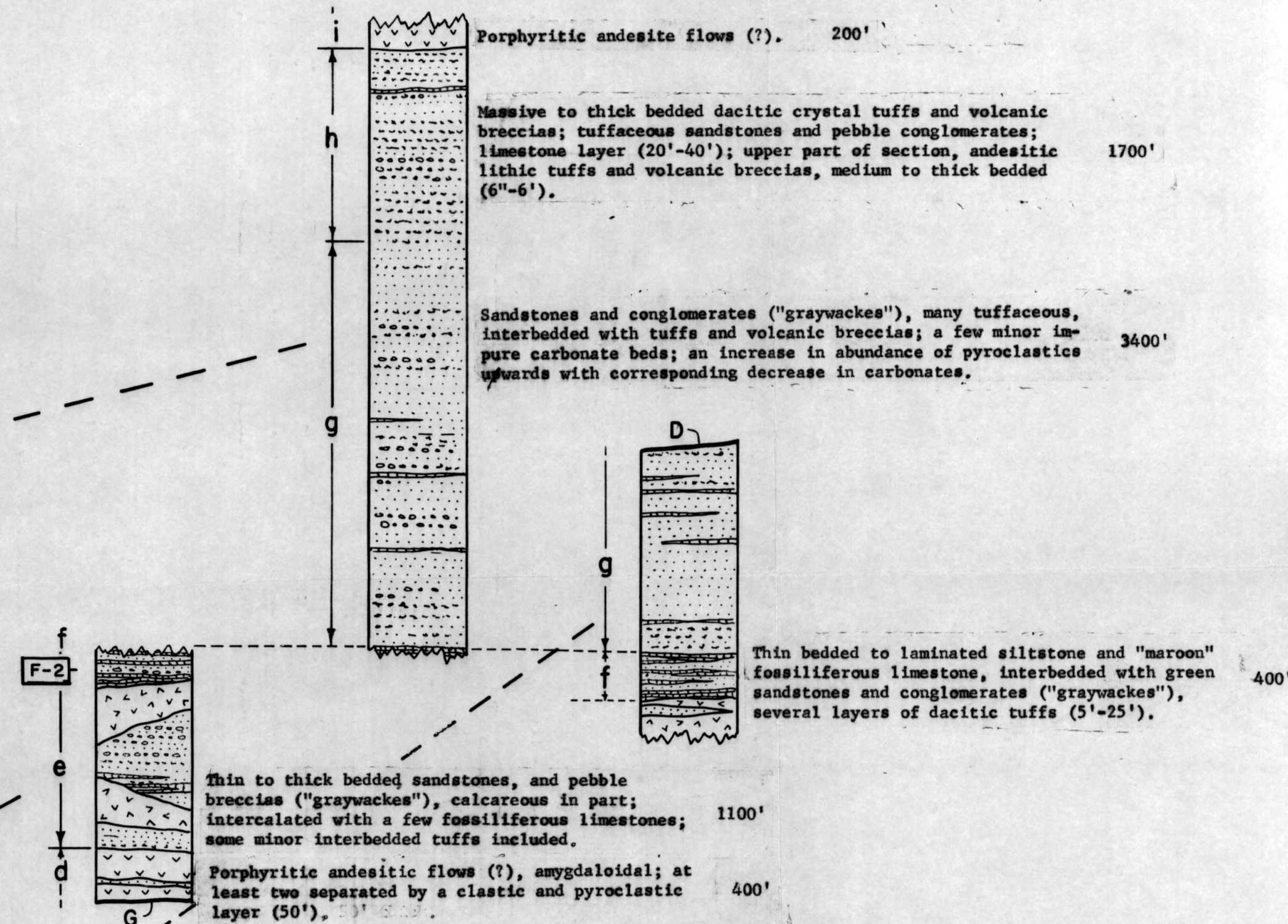


RAINBOW MOUNTAIN SEQUENCE

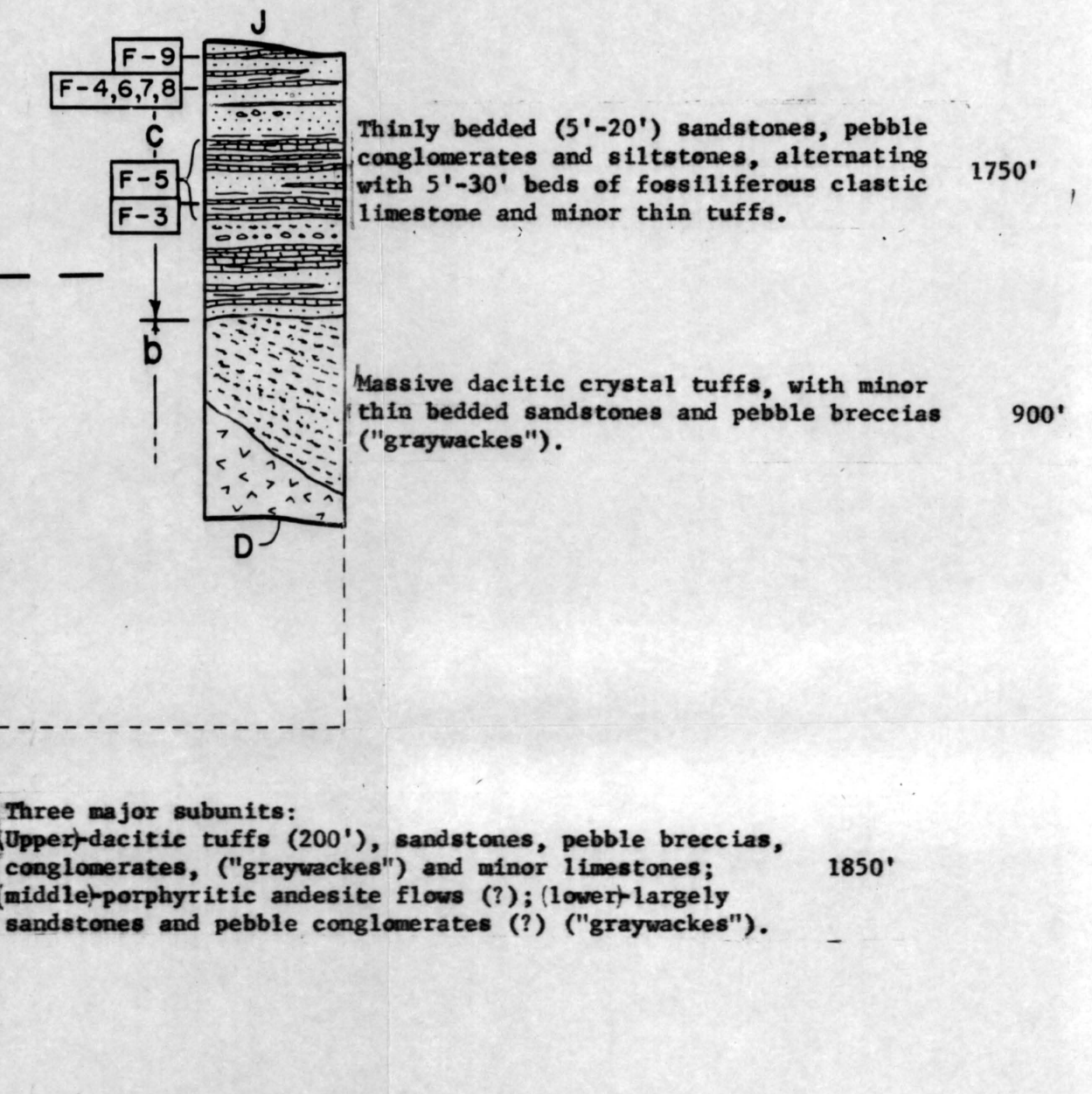
"NORTHWEST FAULT BLOCK"



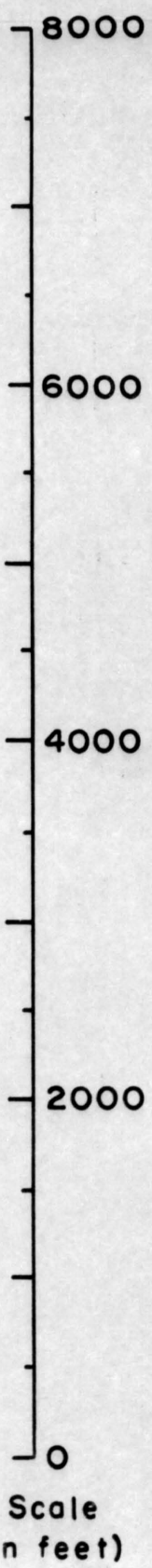
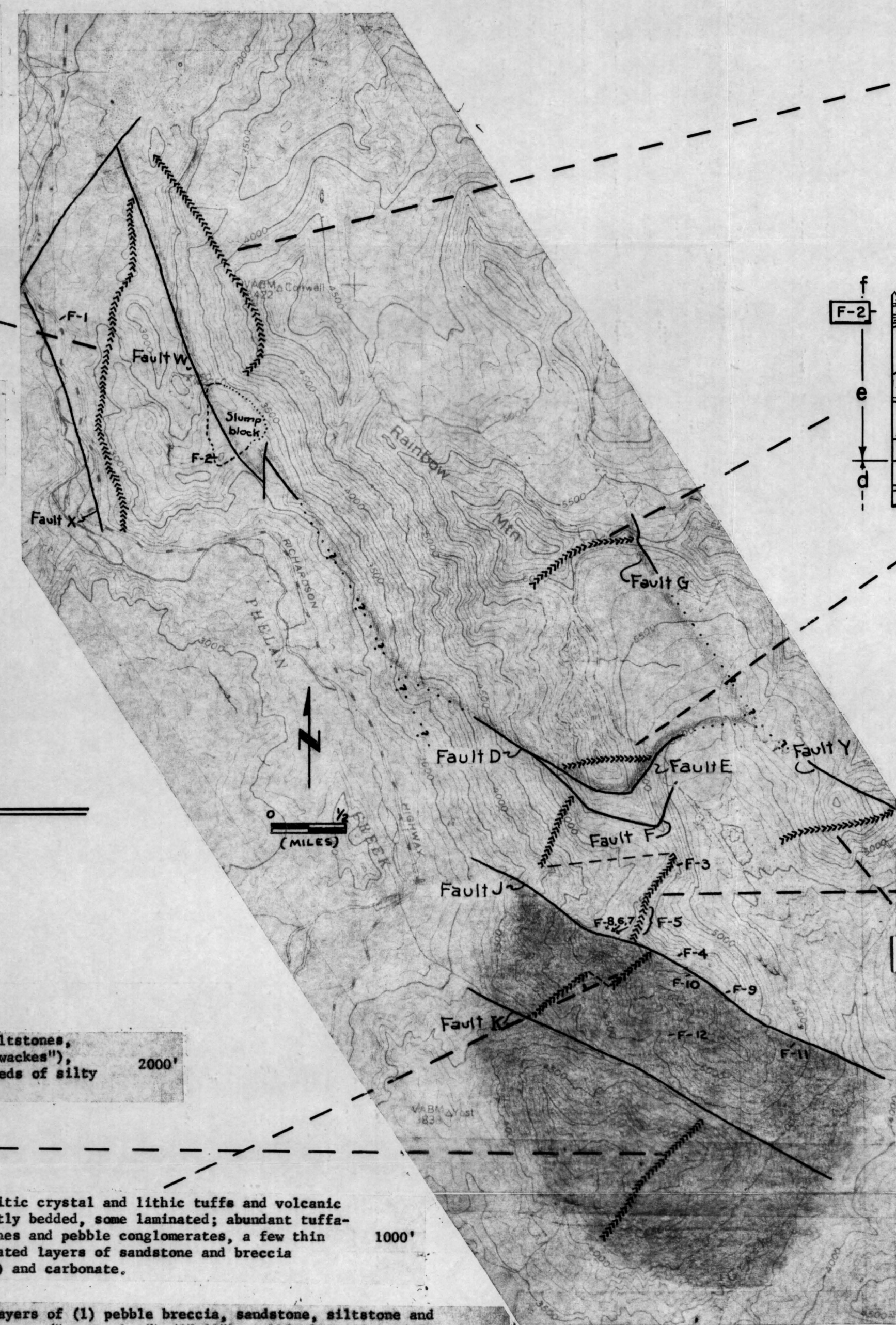
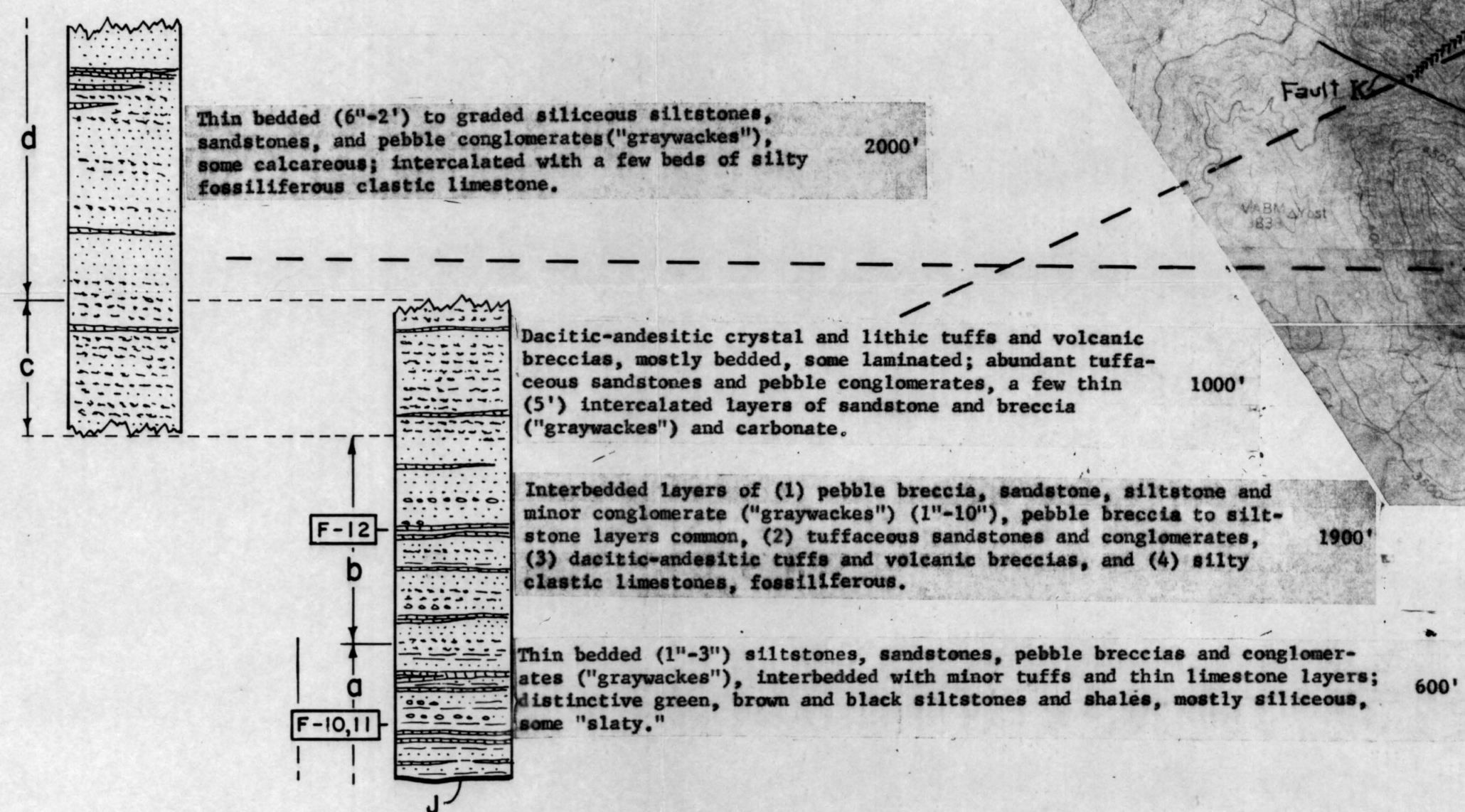
"NORTH FAULT BLOCK"



"SOUTH FAULT BLOCK"



MCCALLUM CREEK SEQUENCE



LEGEND

- | | | | |
|--|--|--|--|
| | Conglomerate ("graywackes" tuffaceous) | | Volcanic |
| | Sandstone ("graywackes" tuffaceous) | | Hypabyssal |
| | Siltstone & shale "slaty" in part. | | Stratigraphic unit (each is described) |
| | Limestone | | Fault |
| | Tuffs & volcanic breccia | | Fossil locality F-5' |
- | | | | |
|--|---------------------------|--|---------------------|
| | MCCALLUM CREEK SEQUENCE | | "NORTH" FAULT BLOCK |
| | RAINBOW MOUNTAIN SEQUENCE | | "SOUTH" FAULT BLOCK |
- Approximate area of section measurement

STRATIGRAPHIC SECTIONS, MCCALLUM CREEK AND RAINBOW MOUNTAIN SEQUENCES.