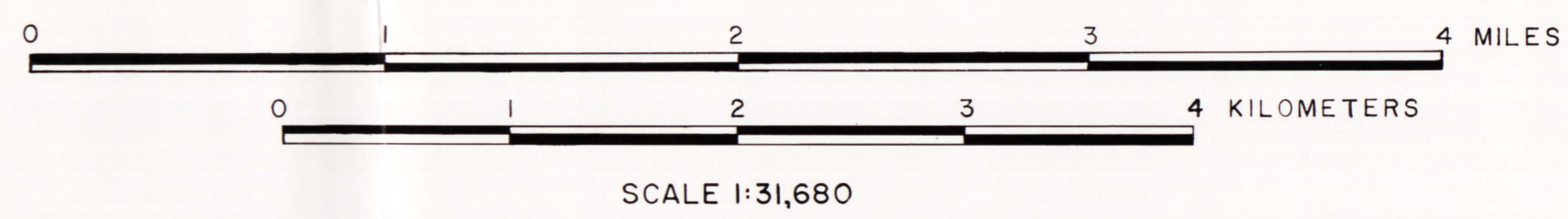
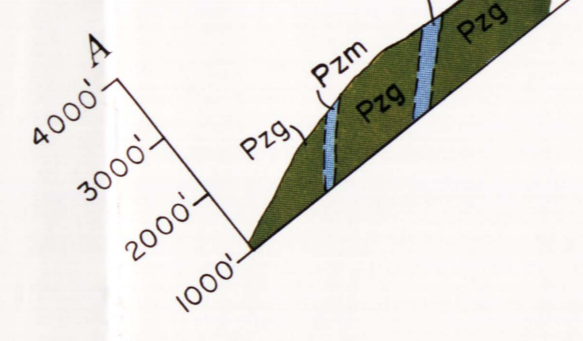
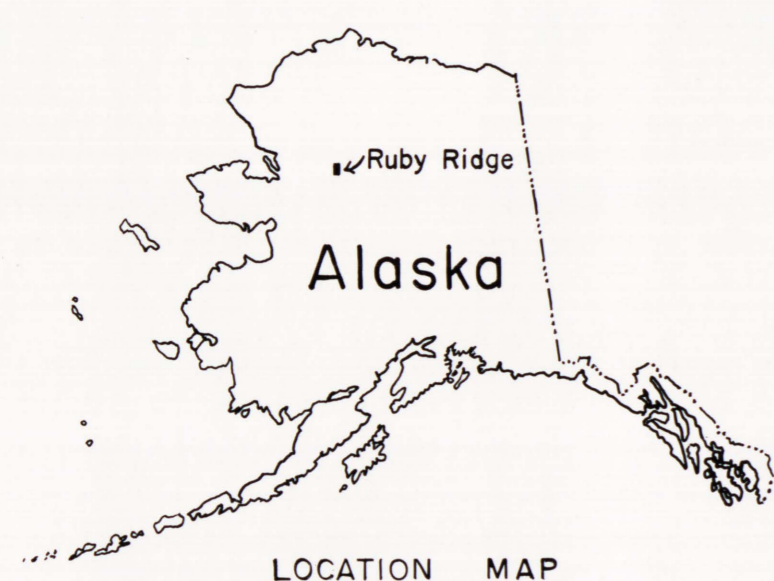
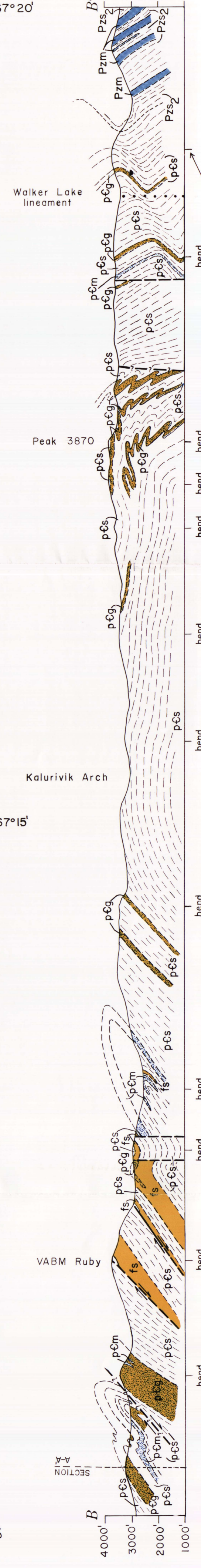
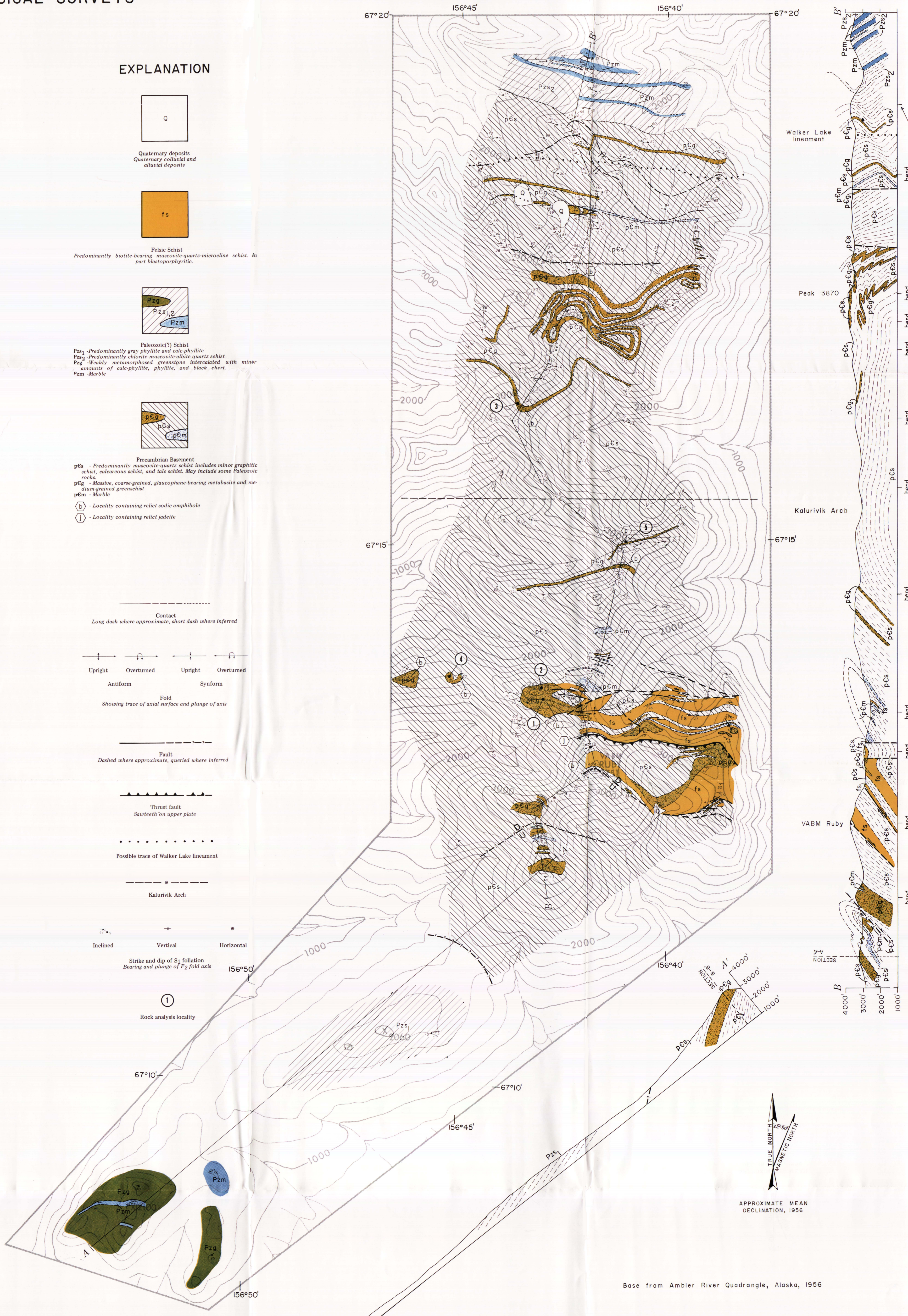
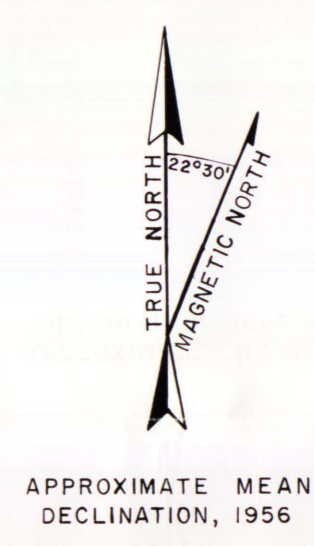


EXPLANATION

- Quaternary deposits
Quaternary colluvial and alluvial deposits
- Felsic Schist
Predominantly biotite-bearing muscovite-quartz-microcline schist. In part blastoporphyritic.
- Paleozoic(?) Schist
Pzs₁ - Predominantly gray phyllite and calc-phyllite
Pzs₂ - Predominantly chlorite-muscovite-albite quartz schist
Pzg - Weakly metamorphosed greenschist intercalated with minor amounts of calc-phyllite, phyllite, and black chert.
Pzm - Marble
- Precambrian Basement
pCs - Predominantly muscovite-quartz schist includes minor graphitic schist, calcareous schist, and talc schist. May include some Paleozoic rocks.
pCg - Massive, coarse-grained, glaucophane-bearing metabasite and medium-grained greenschist
pEm - Marble
- (b) - Locality containing relict sodic amphibole
(i) - Locality containing relict jadeite
- Contact
Long dash where approximate, short dash where inferred
- Upright Antiform, Overturned Antiform, Upright Synform, Overturned Synform
Showing trace of axial surface and plunge of axis
- Fault
Dashed where approximate, queried where inferred
- Thrust fault
Sawtooth on upper plate
- Possible trace of Walker Lake lineament
- Kalurivik Arch
- Strike and dip of S₁ foliation
Bearing and plunge of F₂ fold axis
- Rock analysis locality



SCALE 1:31,680



APPROXIMATE MEAN DECLINATION, 1956

Base from Ambler River Quadrangle, Alaska, 1956

GEOLOGY OF RUBY RIDGE, SOUTHWESTERN BROOKS RANGE, ALASKA

by Wyatt G. Gilbert, Milton A. Wiltse, John R. Carden, Robert B. Forbes, and Steve W. Hackett

1977