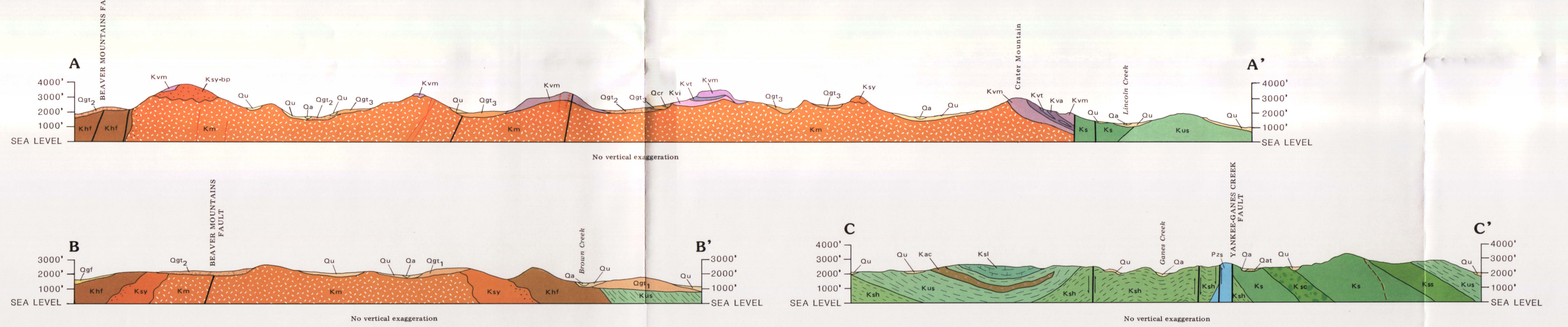


Base by U.S. Geological Survey, 1954. Universal Transverse Mercator projection, 1927. Geology by T.K. Bundtzen and G.M. Laird, 1979 and 1981. Reviewed by M.S. Robinson and R.D. Rose. Cartography by G.M. Laird.



GEOLOGIC MAP OF THE IDITAROD D-2 AND EASTERN D-3 QUADRANGLES, ALASKA

By T. K. Bundtzen and G. M. Laird 1982

Geological legend and descriptions. Includes 'CORRELATION OF MAP UNITS' showing stratigraphic columns for Quaternary, Tertiary, and Paleozoic. 'DESCRIPTION OF MAP UNITS' lists various rock types like stream alluvium, terraces, and igneous rocks. 'INTRUSIVE AND METAMORPHIC ROCKS' describes rhyolite, hornfels, and monzonite. 'REFERENCES' and 'REFERENCES' are also included.

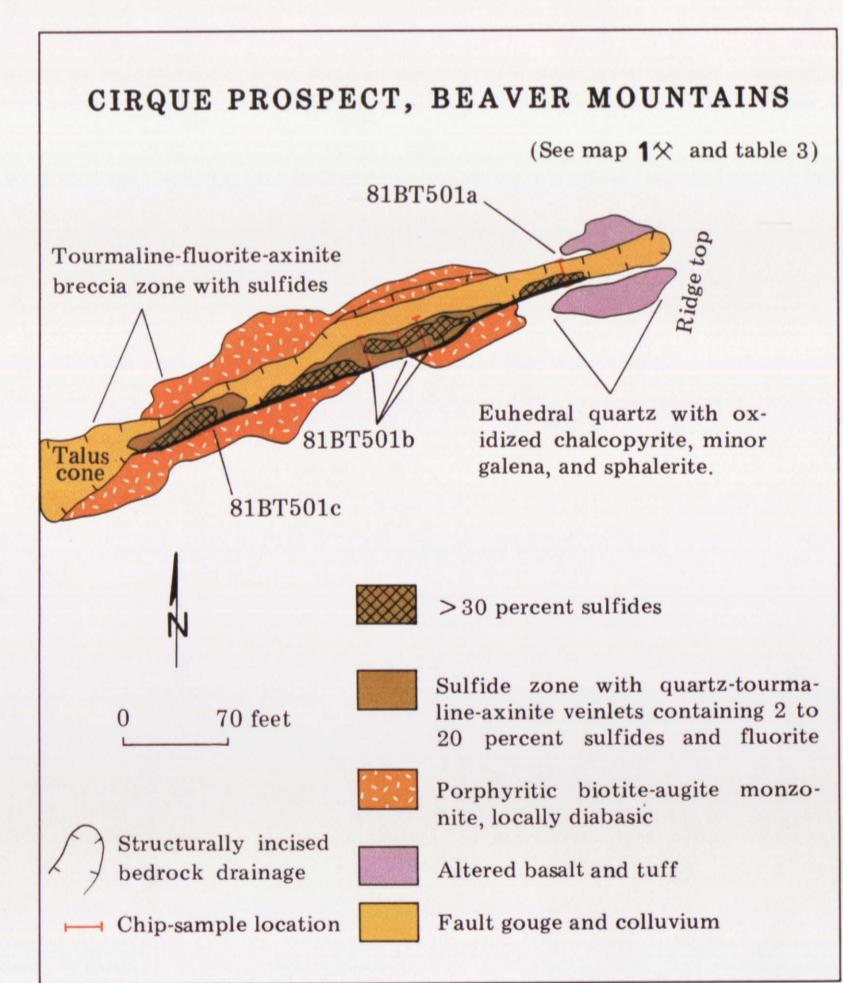


Table 1. Major-oxide analyses and CIPW norms of igneous rocks. Table 2. Analytical data for 40K, 40Ar age determinations. Table 3. Analytical results of mineral prospects in Iditarod D-2 and eastern D-3 Quadrangles.

Table 4. DGS Minerals Laboratory U.S. Bureau of Mines. Table 5. Constants used in age calculations. Table 6. DGS Minerals Laboratory U.S. Bureau of Mines. Table 7. DGS Minerals Laboratory U.S. Bureau of Mines.