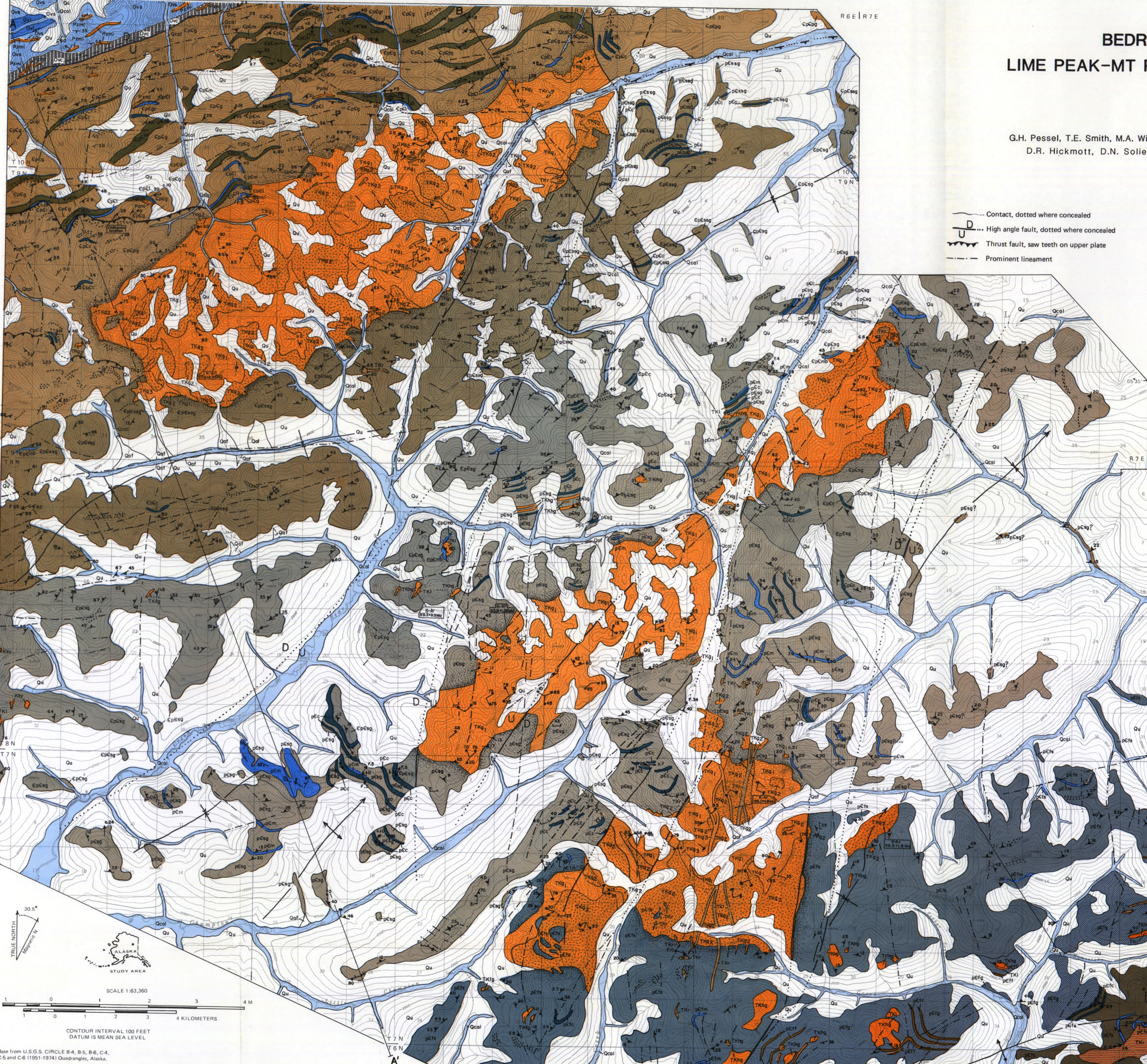


# BEDROCK GEOLOGIC MAP OF THE LIME PEAK-MT PRINDLE AREA, EAST-CENTRAL ALASKA

Compiled by  
**T. E. SMITH and G.H. PESSEL**  
 from geologic mapping by

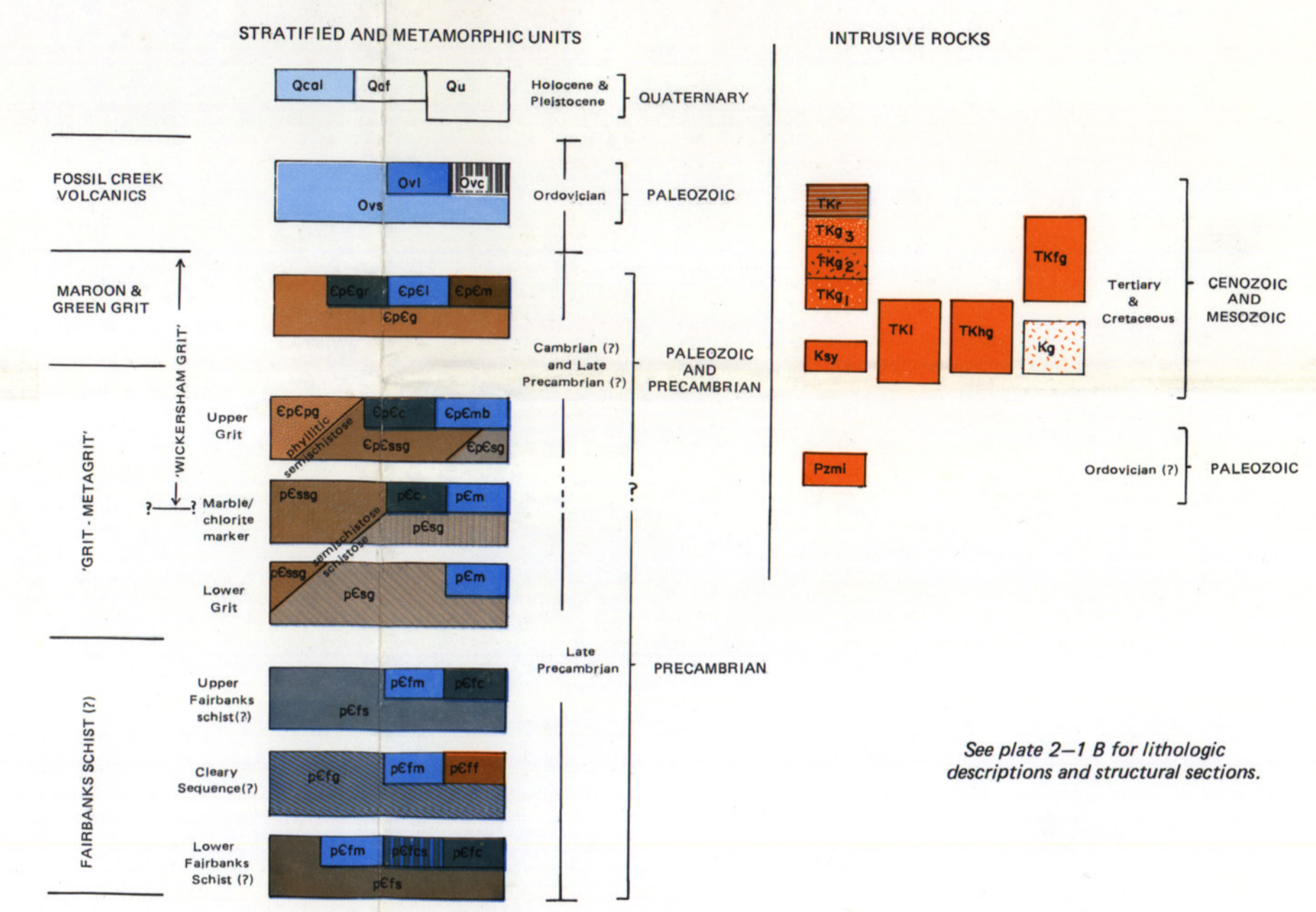
G.H. Pessel, T.E. Smith, M.A. Wiltse, M.D. Albanese, R.R. Reifenhuth, L.E. Burns, S.E. Rawlinson, D.D. Adams,  
 D.R. Hickmott, D.N. Solie, T.A. Little, R.J. Newberry, R.C. Swainbank, and P.J. Burton, 1986.



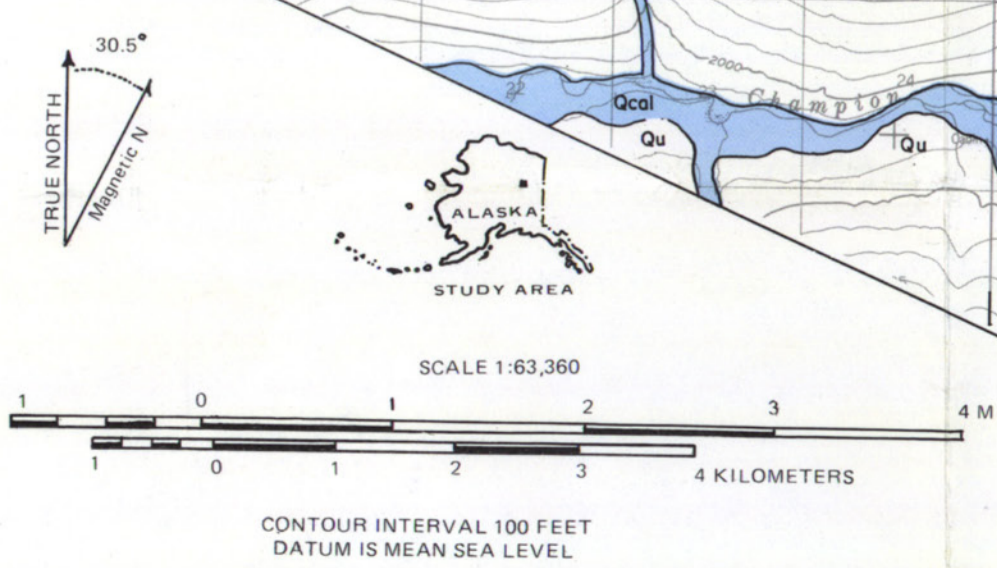
### GEOLOGIC MAP SYMBOLS

- |  |                    |   |                                   |
|--|--------------------|---|-----------------------------------|
| Contact, dotted where concealed          | Inclined bedding   | Inclined joint                            | Syncline                          |
| High angle fault, dotted where concealed | Vertical bedding   | Vertical joint                            | Anticline                         |
| Thrust fault, saw teeth on upper plate   | Inclined foliation | Lineation; c = crenulation, f = fold axis | "Grit" (qtz granule conglomerate) |
| Prominent lineament                      | Vertical foliation | Minor anticline showing plunge of axis    | Hornfels zone near intrusive      |
|  | Inclined cleavage  |   |                                   |

### CORRELATION OF MAP UNITS



See plate 2-1 B for lithologic descriptions and structural sections.



Base from U.S.G.S. CIRCLE B-4, B-5, B-6, C-4, C-5 and C-6 (1951-1974) Quadrangles, Alaska.