

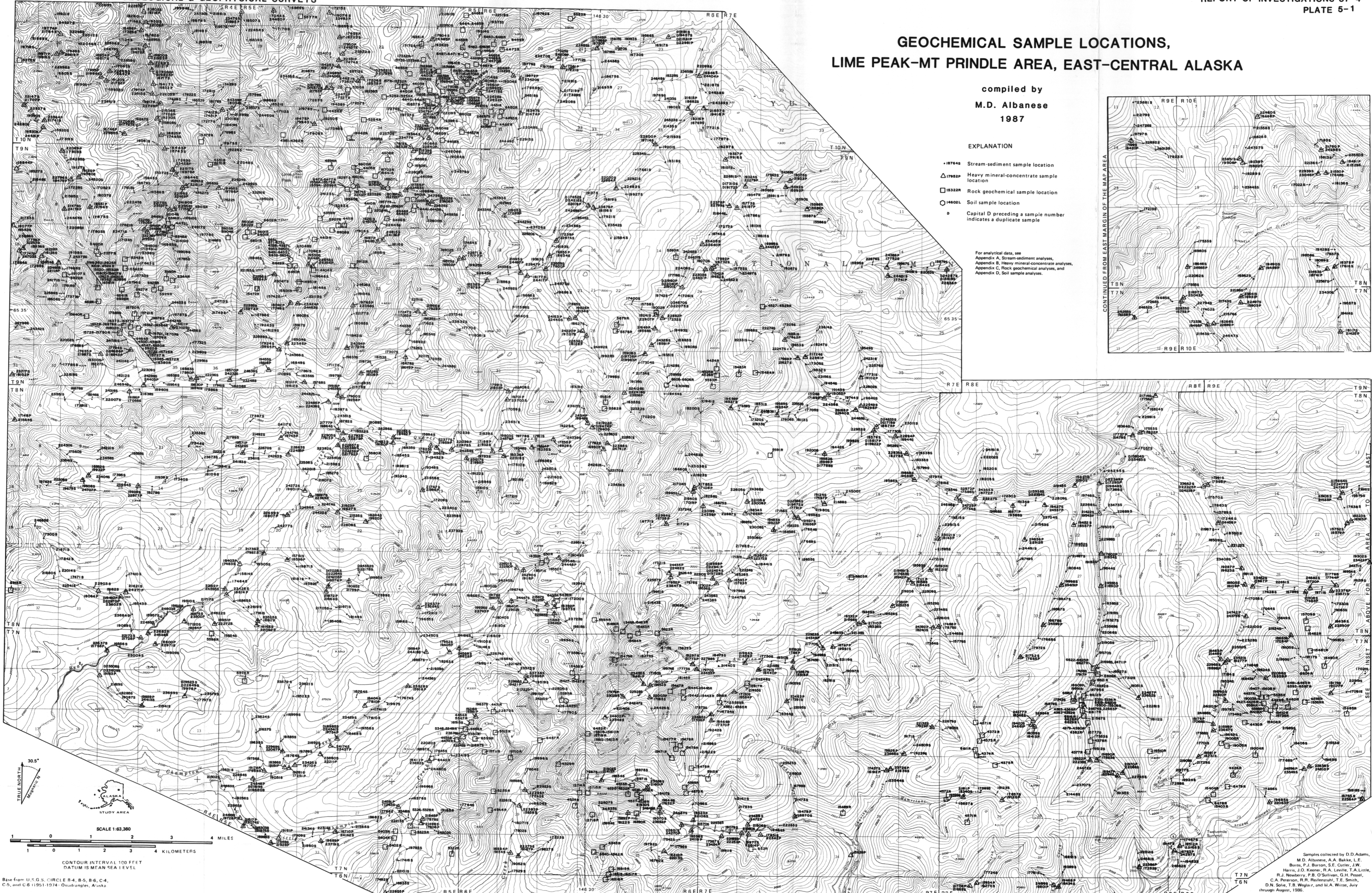
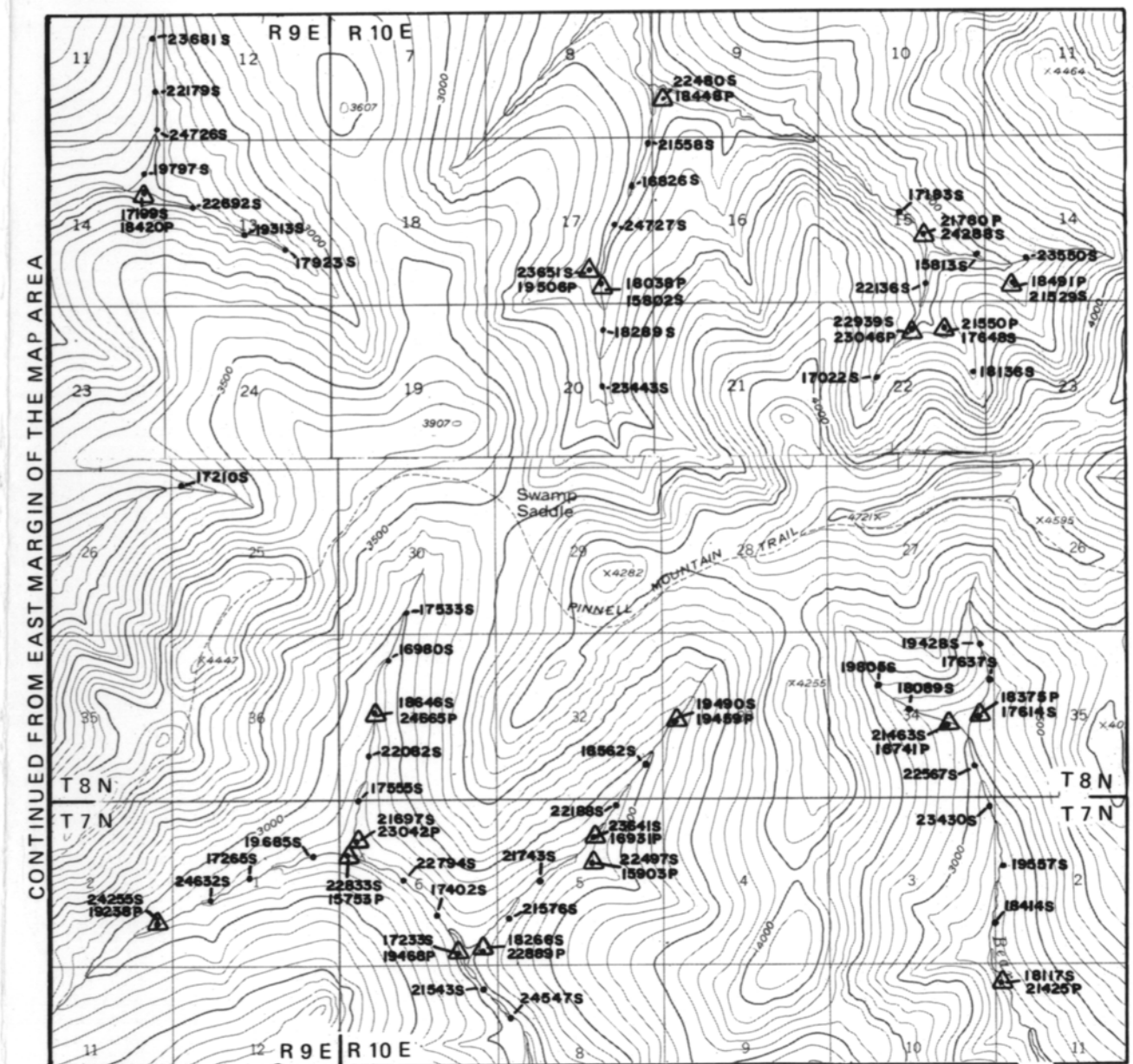
GEOCHEMICAL SAMPLE LOCATIONS, LIME PEAK-MT PRINDLE AREA, EAST-CENTRAL ALASKA

compiled by
M.D. Albanese
1987

EXPLANATION

- 187648 Stream-sediment sample location
- △ 178822 Heavy mineral-concentrate sample location
- 183228 Rock geochemical sample location
- 14602L Soil sample location
- D Capital D preceding a sample number indicates a duplicate sample

For analytical data, see
Appendix A, Stream-sediment analyses,
Appendix B, Heavy mineral-concentrate analyses,
Appendix C, Rock geochemical analyses, and
Appendix D, Soil sample analyses.



Base from U.S.G. CIRCLE B-4, B-5, B-6, C-4, C-5, and C-6 (1951-1974 - Quadrangles, Alaska)

Samples collected by D.D. Adams, M.D. Albanese, A.A. Bakke, L.E. Burns, P.J. Burton, S.E. Cutler, J.W. Harris, J.O. Keener, R.A. Lewis, T.A. Little, R.J. Newberry, P.B. O'Sullivan, G.H. Pessel, C.A. Peterson, R.R. Reifensuhl, T.E. Smith, D.M. Soto, T.B. Wiegman, and M.A. Witte, July through August, 1985.