

Ag, As, Au, Ba AND Sb IN HEAVY-MINERAL CONCENTRATES, LIME PEAK-MT PRINDLE AREA, EAST-CENTRAL ALASKA

compiled by M.A. Wiltse
1987

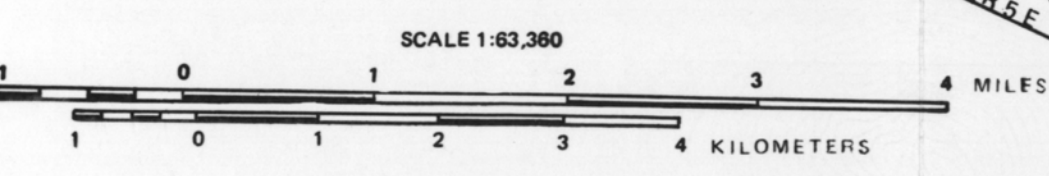
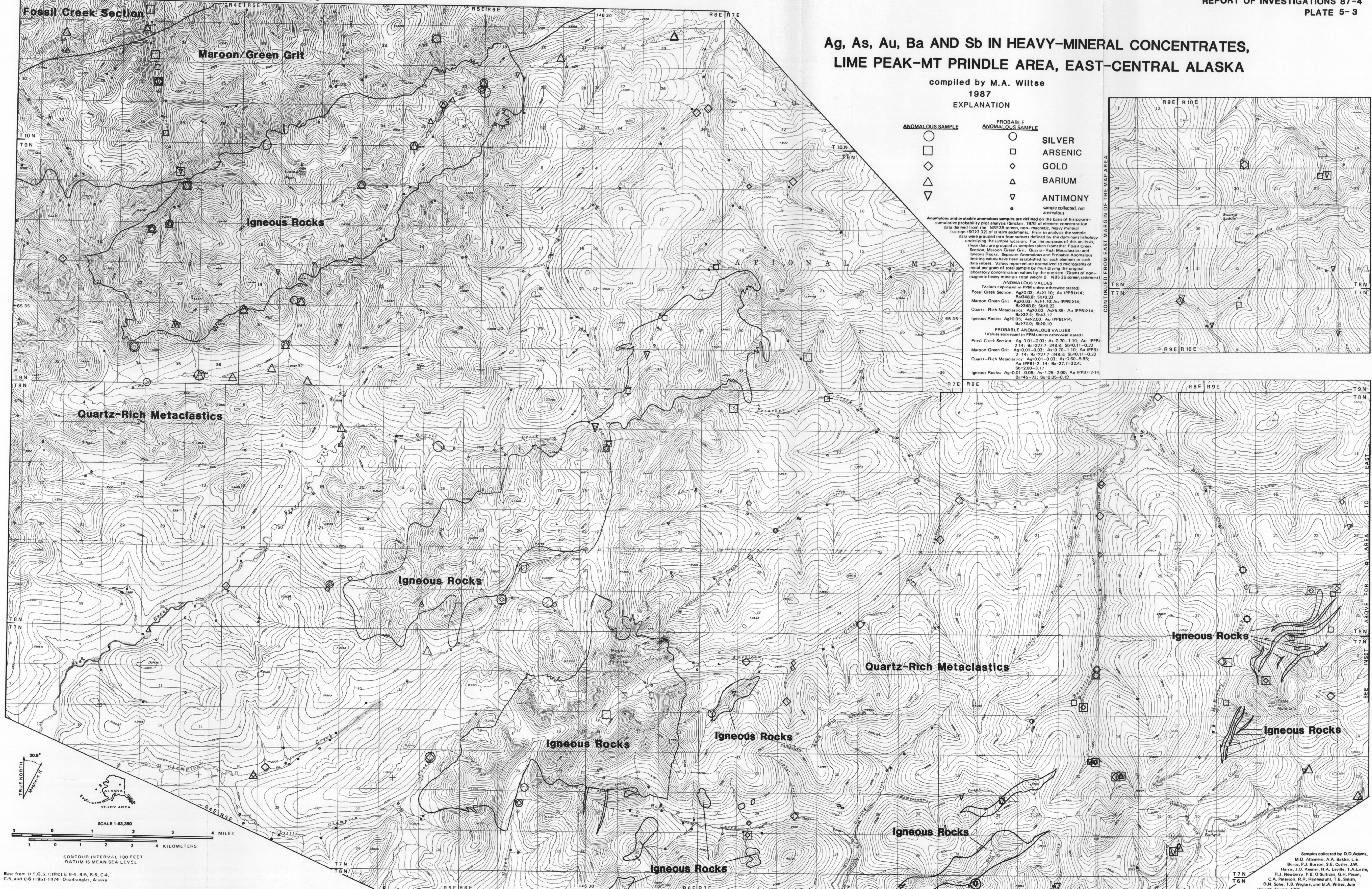
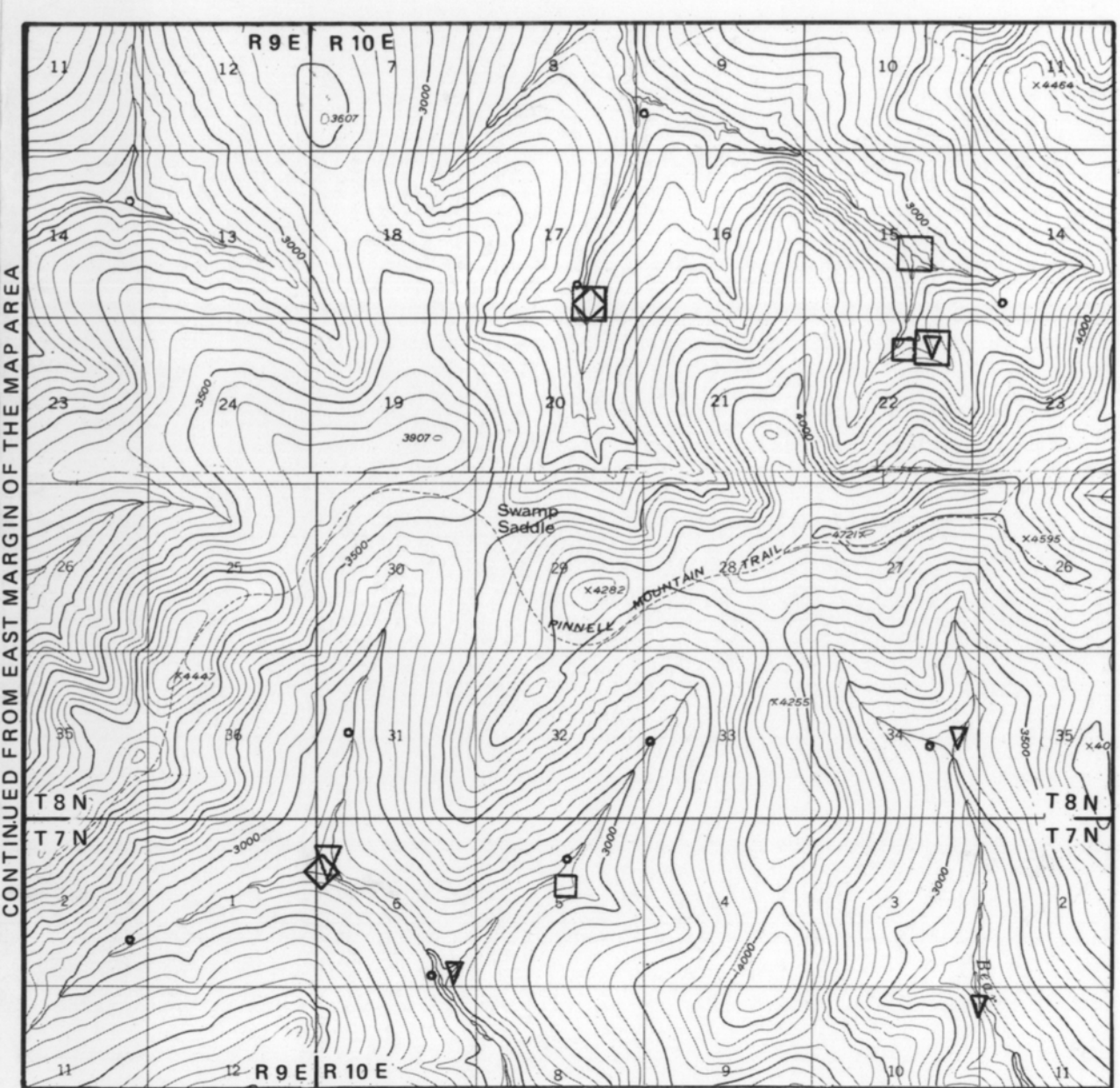
EXPLANATION

- | ANOMALOUS SAMPLE | PROBABLE ANOMALOUS SAMPLE | |
|------------------|---------------------------|---------------------------------|
| ○ | ○ | SILVER |
| □ | □ | ARSENIC |
| ◇ | ◇ | GOLD |
| △ | △ | BARIUM |
| ▽ | ▽ | ANTIMONY |
| | ● | sample collected, not anomalous |

Anomalous and probable anomalous samples are defined on the basis of histogram-cumulative probability plot analysis (Sincjar, 1976) of element concentration data derived from the NBS 35 screen, non-magnetic, heavy mineral fraction (SG23.32) of stream sediments. Prior to analysis the sample data were grouped into four subsets defined by the dominant lithology underlying the sample location. For the purposes of this analysis, these data are grouped as samples taken from the: Fossil Creek Section, Maroon Green Grit, Quartz-Rich Metaclastics, and Igneous Rocks. Separate Anomalous and Probable Anomalous data subsets. Values reported are normalized to micrograms of metal per gram of total sample by multiplying the original laboratory concentration values by the constant: (Grams of non-magnetic heavy mineral/total weight of NBS 35 screen, sediment).

ANOMALOUS VALUES
(Values expressed in PPM unless otherwise stated)
Fossil Creek Section: Ag>0.03; As>1.10; Au (PPB)>14; Ba>348.8; Sb>0.23
Maroon Green Grit: Ag>0.03; As>1.10; Au (PPB)>14; Ba>348.8; Sb>0.23
Quartz-Rich Metaclastics: Ag>0.03; As>5.85; Au (PPB)>14; Ba>73.0; Sb>0.17
Igneous Rocks: Ag>0.05; As>2.00; Au (PPB)>14; Ba>45.73; Sb>0.10

PROBABLE ANOMALOUS VALUES
(Values expressed in PPM unless otherwise stated)
Fossil Creek Section: Ag 0.01-0.03; As 0.70-1.10; Au (PPB) 2-14; Ba 227.7-348.8; Sb 0.11-0.23
Maroon Green Grit: Ag 0.01-0.03; As 0.70-1.10; Au (PPB) 2-14; Ba 227.7-348.8; Sb 0.11-0.23
Quartz-Rich Metaclastics: Ag 0.01-0.03; As 2.60-5.85; Au (PPB) 2-14; Ba 27.7-32.4; Sb 2.00-3.17
Igneous Rocks: Ag 0.01-0.05; As 1.25-2.00; Au (PPB) 2-14; Ba 45.73; Sb 0.05-0.10



CONTOUR INTERVAL 100 FEET
DATUM IS MEAN SEA LEVEL

Base from U.S.G.S. CIRCLE R-4, B-5, B-6, C-4, C-5, and C-6 11951-1974 Oondangan, Alaska

Samples collected by D.D. Adams, M.D. Albanese, A.A. Baker, L.E. Burris, P.J. Burton, S.E. Cutler, J.W. Harris, J.O. Keener, R.A. Levitt, T.A. Little, R.J. Newberry, P.B. O'Sullivan, G.H. Pease, C.A. Peterson, R.R. Reifensuhl, T.E. Smith, D.N. Solie, T.B. Woglars, and M.A. Wiltse, July through August, 1986.