

**Cu, Pb, Zn, Ba, U, AND Ag IN STREAM-SEDIMENT SAMPLES,
 LIME PEAK-MT PRINDLE AREA, EAST-CENTRAL ALASKA**
 compiled by M.A. Wiltse
 1987

EXPLANATION

- | | |
|-------------------------|-----------------------------------|
| ANOMALOUS SAMPLE | PROBABLE ANOMALOUS SAMPLE |
| ○ | ○ COPPER |
| ▽ | ▽ LEAD |
| △ | △ ZINC |
| □ | □ BARIUM |
| ◇ | ◇ URANIUM |
| + | + SILVER |
| ● | ● sample collected, not anomalous |

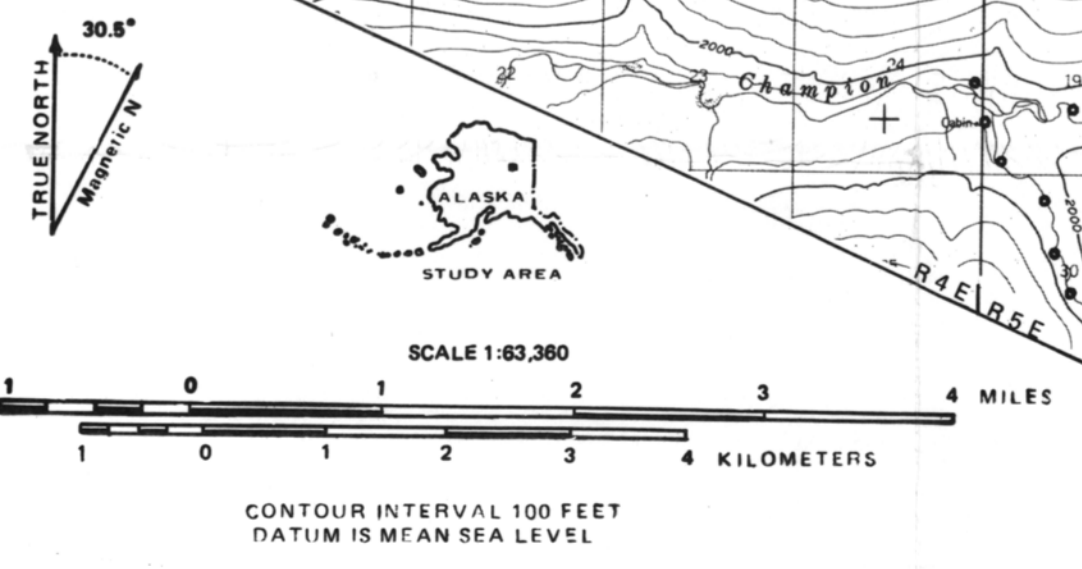
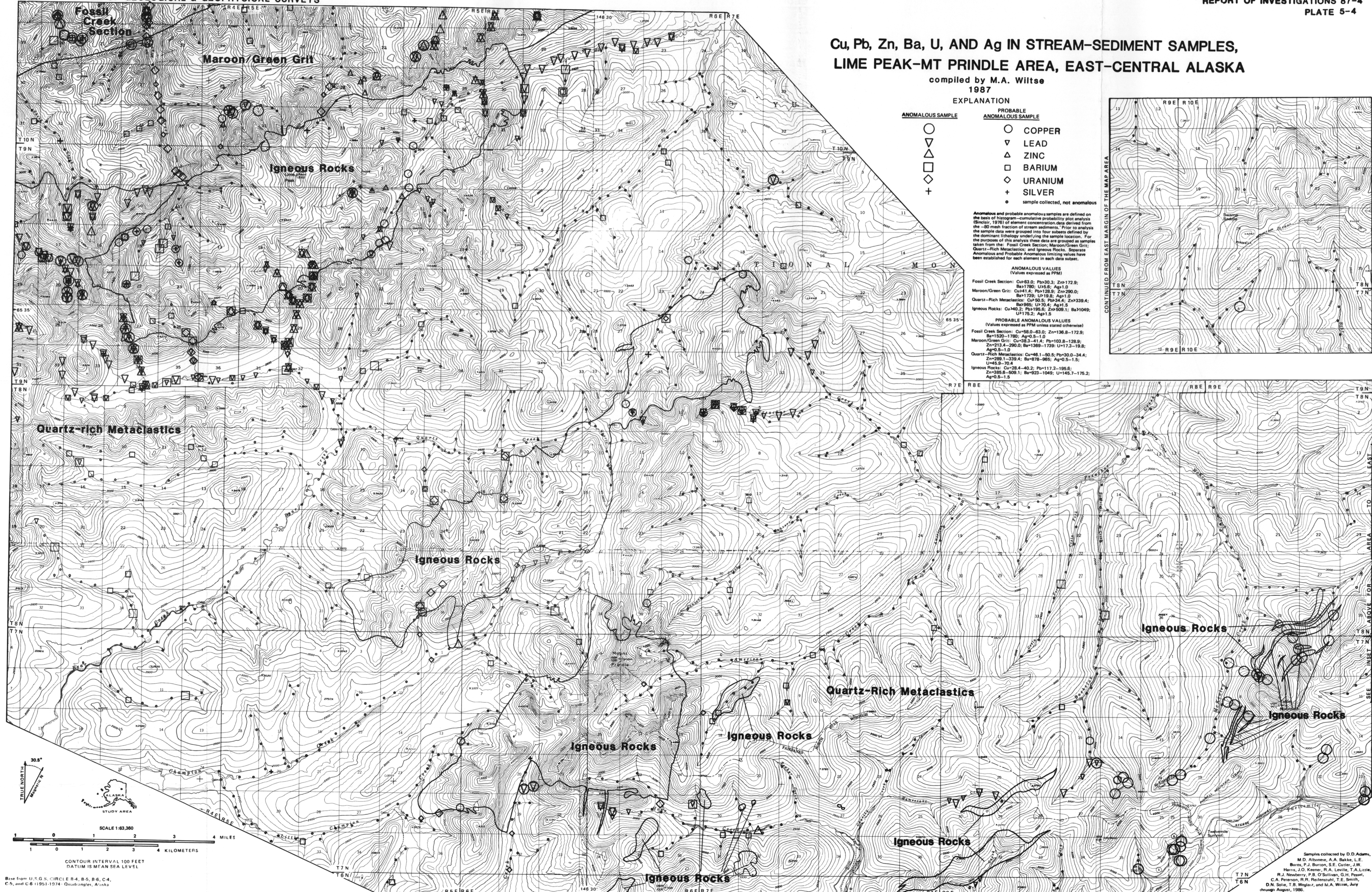
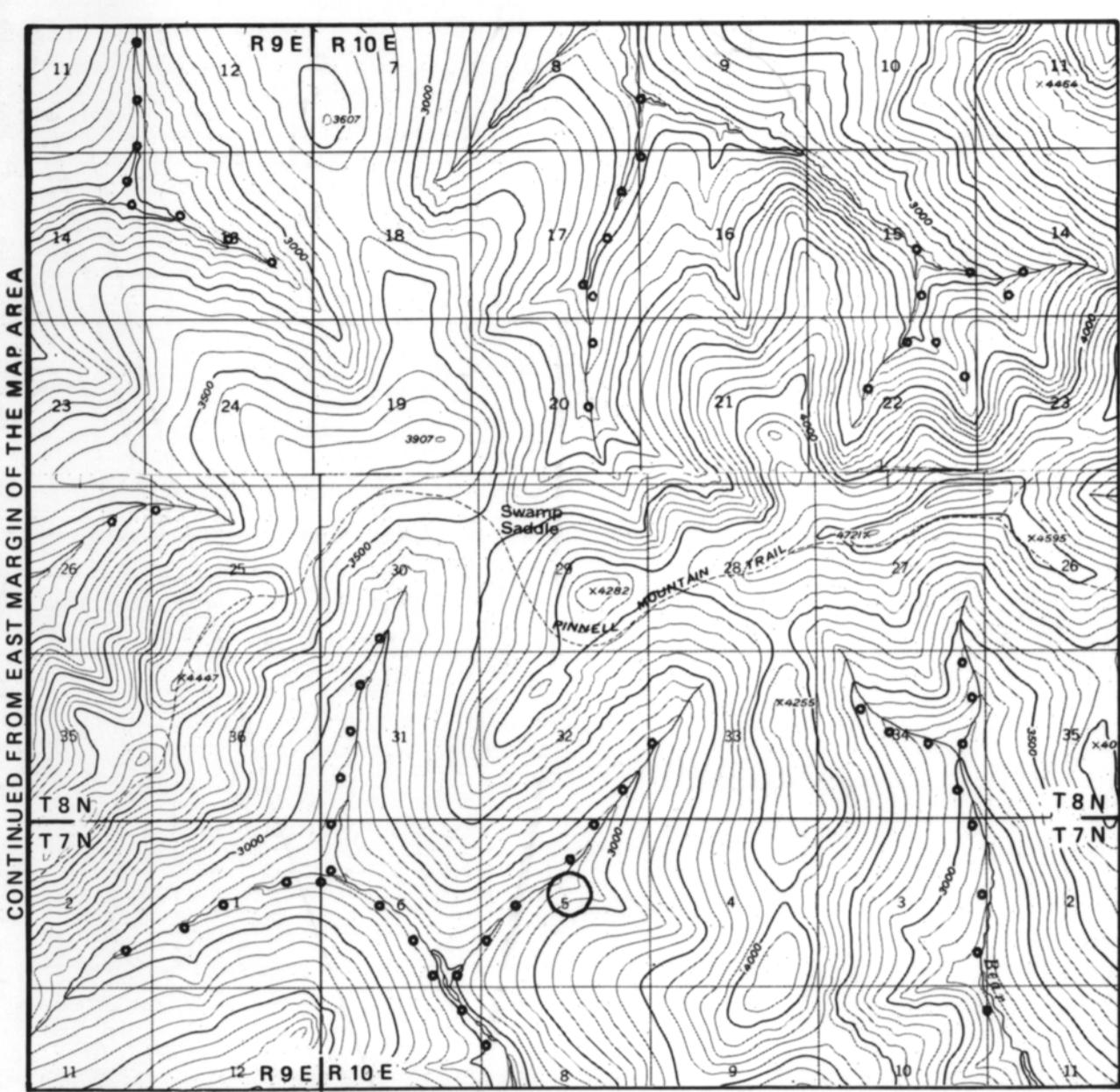
Anomalous and probable anomalous samples are defined on the basis of histogram-cumulative probability plot analysis (Sincich, 1976) of element concentration data derived from the -80 mesh fraction of stream sediments. Prior to analysis the sample data were grouped into four subsets defined by the dominant lithology underlying the sample location. For the purposes of this analysis these data are grouped as samples taken from the: Fossil Creek Section; Maroon/Green Grit; Quartz-Rich Metaclastics; and Igneous Rocks. Separate Anomalous and Probable Anomalous limiting values have been established for each element in each data subset.

ANOMALOUS VALUES
 (Values expressed as PPM)

Fossil Creek Section:	Cu>63.0; Pb>30.3; Zn>172.9;
	Ba>1780; U>5.8; Ag>1.0
Maroon/Green Grit:	Cu>41.4; Pb>128.9; Zn>290.0;
	Ba>1720; U>19.8; Ag>1.0
Quartz-Rich Metaclastics:	Cu>50.5; Pb>34.4; Zn>339.4;
	Ba>985; U>70.4; Ag>1.5
Igneous Rocks:	Cu>40.2; Pb>195.6; Zn>509.1; Ba>1049;
	U>175.2; Ag>1.5

PROBABLE ANOMALOUS VALUES
 (Values expressed as PPM unless stated otherwise)

Fossil Creek Section:	Cu=63.0-43.0; Pb=30.3-17.2;
	Ba=1520-1780; U=0.5-1.0; Zn=136.8-172.9;
	Ag=0.5-1.0
Maroon/Green Grit:	Cu=38.3-41.4; Pb=103.8-128.9;
	Zn=213.4-290.0; Ba=1369-1739; U=17.3-19.8;
	Ag=0.5-1.0
Quartz-Rich Metaclastics:	Cu=46.1-50.5; Pb=30.0-34.4;
	Zn=289.1-339.4; Ba=978-985; Ag=0.5-1.5;
	U=45.9-70.4
Igneous Rocks:	Cu=28.4-40.2; Pb=117.2-195.6;
	Zn=355.8-509.1; Ba=923-1049; U=145.7-175.2;
	Ag=0.5-1.5



Base from U.S.G.S. ORC1 E R 4, B-5, B-6, C-4, C-5, and C-6 (1951-1974) Quadrangles, Alaska

Samples collected by D.D. Adams, M.D. Albanese, A.A. Bakke, L.E. Burns, P.J. Burton, S.E. Currier, J.W. Harris, J.O. Keener, R.A. Lewis, T.A. Little, R.J. Newberry, P.B. O'Sullivan, G.H. Pessel, C.A. Peterson, R.R. Reitenstahl, T.E. Smith, D.M. Soto, T.B. Wehner, and M.A. Wiltse, July through August, 1986.