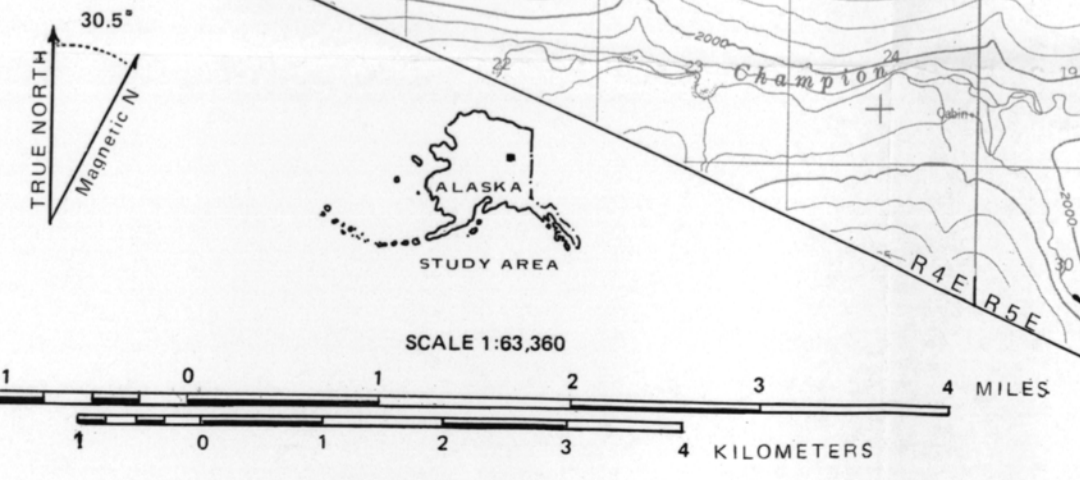
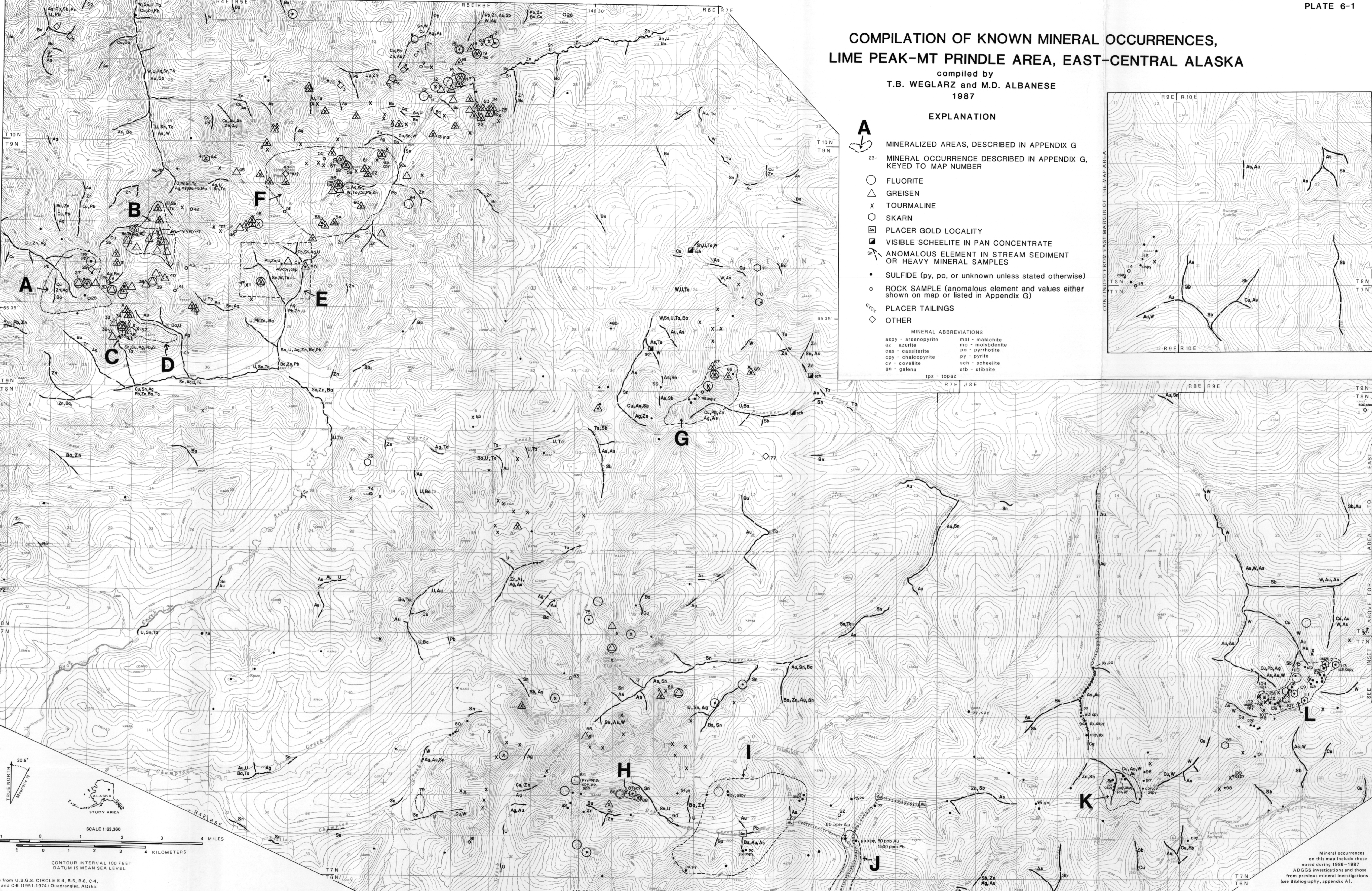
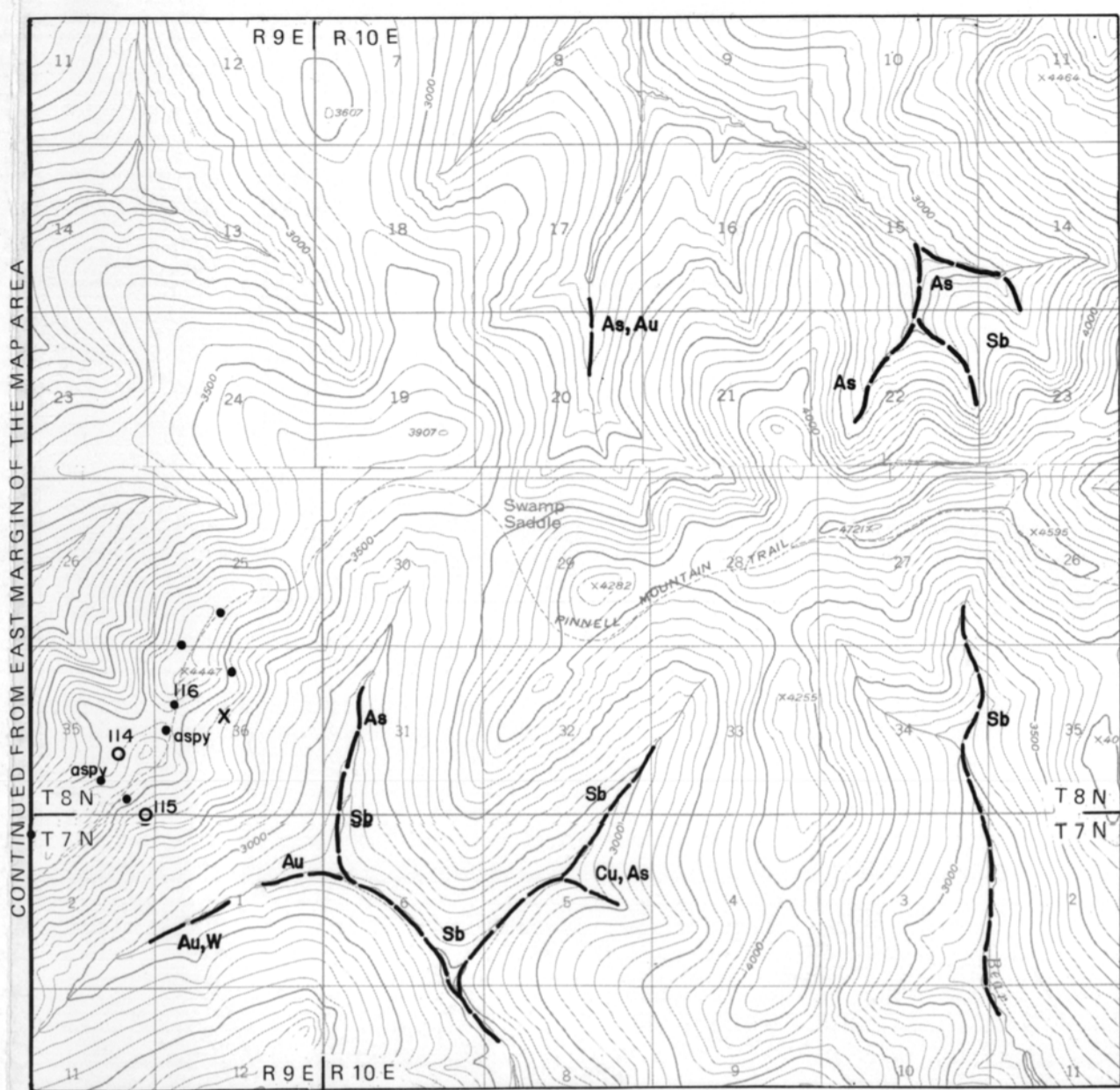


COMPILATION OF KNOWN MINERAL OCCURRENCES,
 LIME PEAK-MT PRINDLE AREA, EAST-CENTRAL ALASKA

compiled by
 T.B. WEGLARZ and M.D. ALBANESE
 1987

EXPLANATION

- A** MINERALIZED AREAS, DESCRIBED IN APPENDIX G
 - 23-** MINERAL OCCURRENCE DESCRIBED IN APPENDIX G, KEYED TO MAP NUMBER
 - FLUORITE
 - △ GREISEN
 - X TOURMALINE
 - SKARN
 - PLACER GOLD LOCALITY
 - VISIBLE SCHEELITE IN PAN CONCENTRATE
 - Sn ○ ANOMALOUS ELEMENT IN STREAM SEDIMENT OR HEAVY MINERAL SAMPLES
 - SULFIDE (py, po, or unknown unless stated otherwise)
 - ROCK SAMPLE (anomalous element and values either shown on map or listed in Appendix G)
 - PLACER TAILINGS
 - ◇ OTHER
- | | |
|-----------------------|------------------|
| MINERAL ABBREVIATIONS | |
| aspy - arsenopyrite | mal - malachite |
| az - azurite | mo - molybdenite |
| cas - cassiterite | py - pyrite |
| cpy - chalcopyrite | sch - scheelite |
| cv - covellite | stb - stibnite |
| gn - galena | |
| tpz - topaz | |



Base from U.S.G.S. CIRCLE B-4, B-5, B-6, C-4, C-5, and C-6 (1951-1974) Quadrangles, Alaska.

Mineral occurrences on this map include those noted during 1986-1987 ADGGS investigations and those from previous mineral investigations (see Bibliography, appendix A).