

METALLOGENIC MAP OF THE LIME PEAK-MT PRINDLE AREA, EAST-CENTRAL ALASKA

compiled by
R.J. Newberry, T.E. Smith, R.C. Swainbank,
M.A. Wiltse, P.J. Burton, and G.H. Pessel
1987

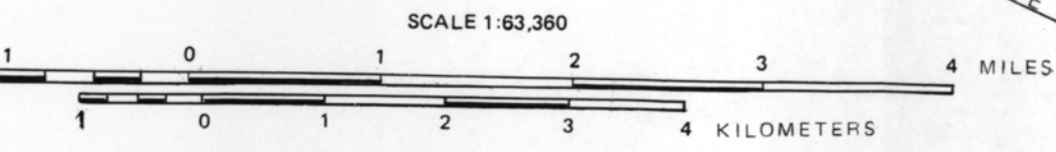
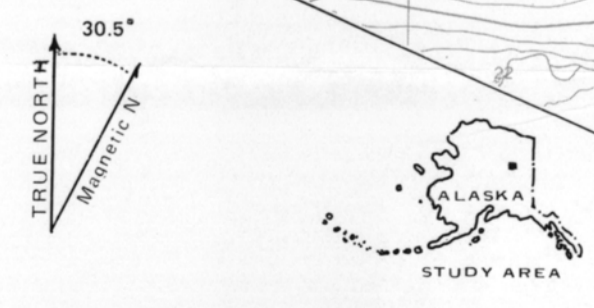
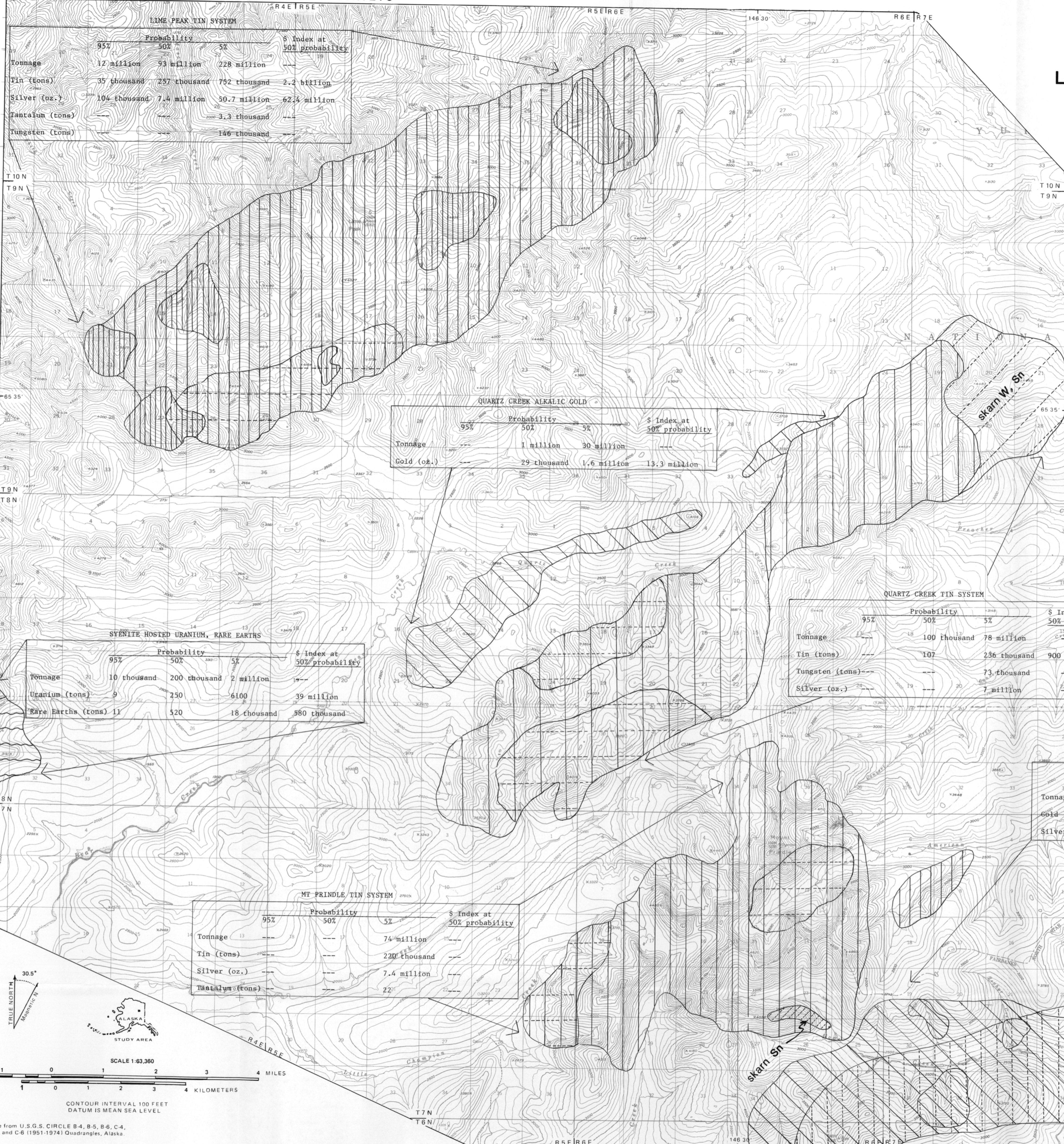
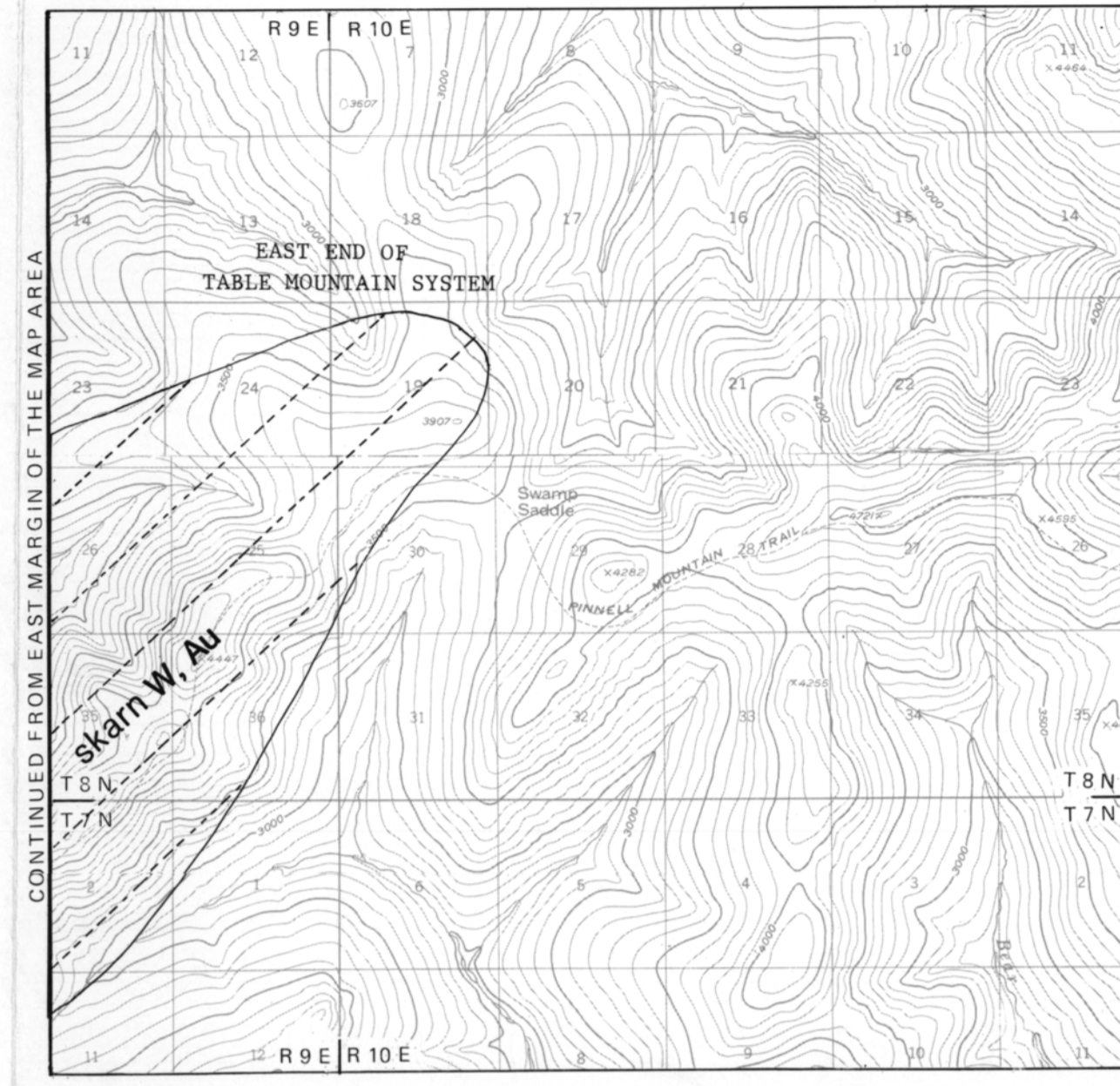
FAVORABILITY FOR LORE MINERAL DEPOSITS
(Closer line spacing indicates higher favorability)

VERY HIGH MODERATE
 HIGH LOW

DEPOSIT TYPES

(1) Vertical lines - Greisen Sn, Ag, Ta, W
 (2) Horizontal lines - Tourmaline gold veins/stockworks
 (3) Diagonal lines - Alkalic associated Au
 (4) Vertical dashes - Stratabound Au
 (5) Horizontal dashes - Igneous hosted U, Th
 (6) Diagonal dashes - Skarn (elements shown)
 (7) Wavy horizontal lines - Syenite hosted REE, U, Th

Tables on map show probabilistic resource estimates by commodity for various tracts at 5, 50, and 95 percent probabilities. The dollar index shown is the approximate gross metal value as of mid-1987 computed at the 50th fractile; it is included for comparative purposes only and does not represent economic viability.



CONTOUR INTERVAL 100 FEET
DATUM IS MEAN SEA LEVEL

Base from U.S.G.S. CIRCLE B-4, B-5, B-6, C-4, C-5, and C-6 (1951-1974) Quadrangles, Alaska.