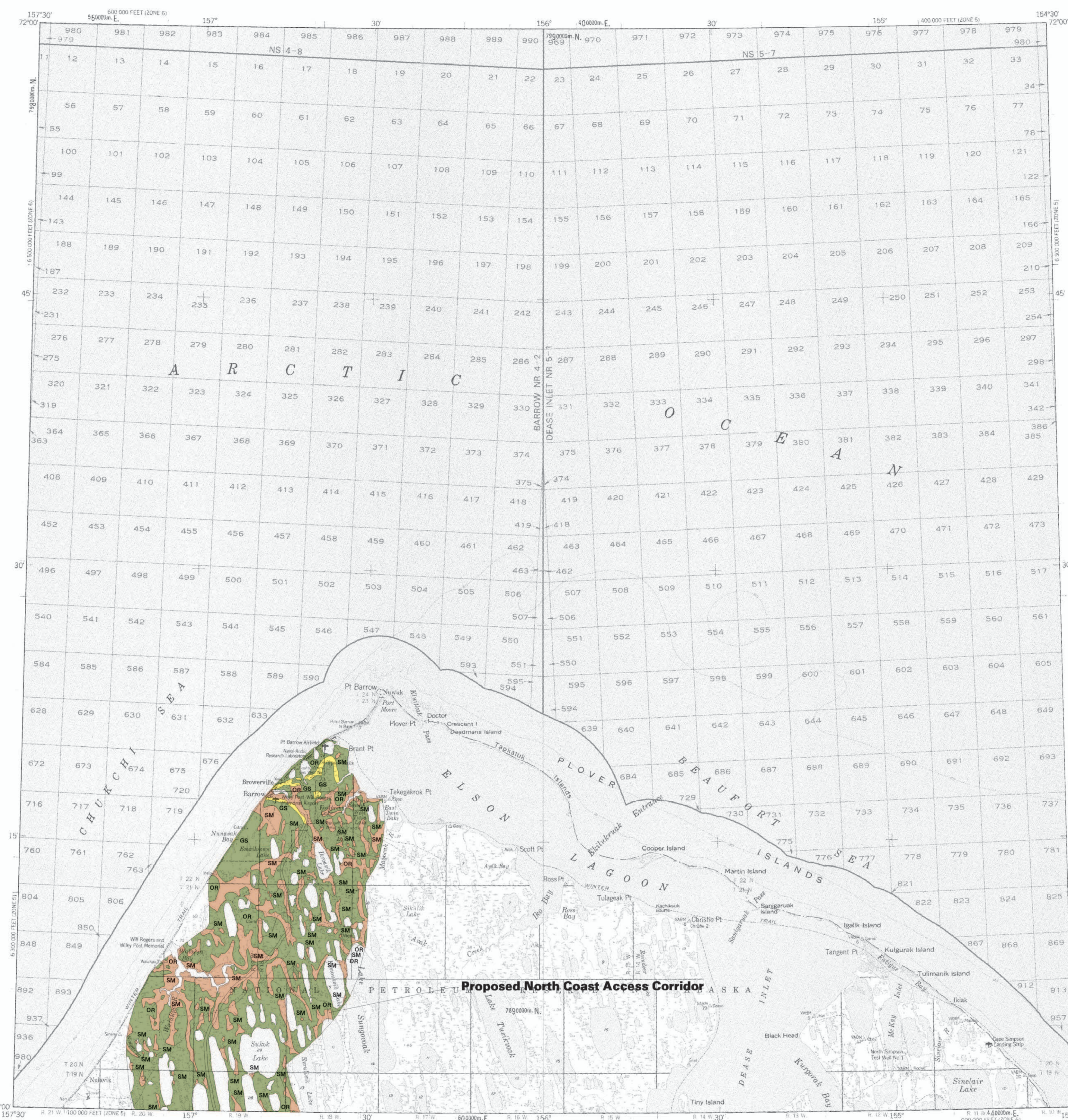


ALASKA DIVISION OF GEOLOGICAL & GEOPHYSICAL SURVEYS



MISCELLANEOUS PUBLICATION 48a  
Reger and others (2003)  
Explanatory booklet published separately as MP 129

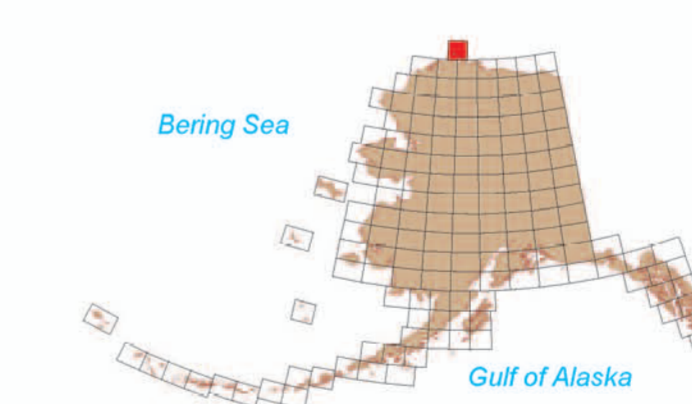
DESCRIPTION OF MAP UNITS

UNCONSOLIDATED DEPOSITS

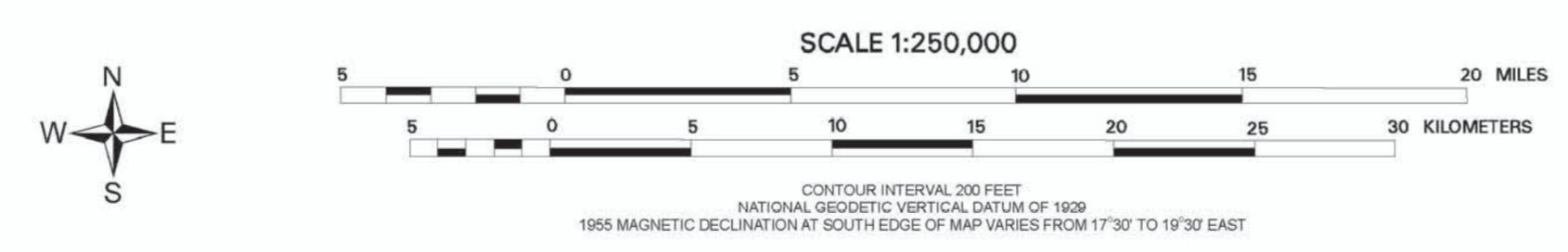
- OS** Mixed coarse and fine material. Estimated 20-80% coarse, granular deposits with considerable oversized material. Includes GM and GC (Unified Soil Classification).
- SM** Chiefly fine materials. Estimated greater than 80% sand, silt, and clay. Includes SM, SC, ML, MH, CL, and CH (Unified Soil Classification).
- OR** Chiefly organic materials. Estimated greater than 50% peat, organic sand, or organic silt. Includes Pt (Unified Soil Classification).

MAP SOURCES

Williams, J.R., and Carter, L.D., 1984, Engineering-geologic maps of northern Alaska, Barrow Quadrangle: U.S. Geological Survey Open-file Report 84-124, 39 p., scale 1:250,000, 2 sheets.



Location map for Barrow Quadrangle



DERIVATIVE GEOLOGIC-MATERIALS MAP OF PROPOSED TRANSPORTATION CORRIDORS  
IN THE BARROW QUADRANGLE, ALASKA

compiled by  
R.D. Reger, D.S.P. Stevens, and R.L. Smith  
2003

The State of Alaska makes no express or implied warranties (including warranties for merchantability and fitness) with respect to the character, functions, or capabilities of the electronic products or services or their appropriateness for any user's purposes. In no event will the State of Alaska be liable for any incidental, indirect, special, consequential or other damages suffered by the user or any other person or entity whether from use of the electronic products or services, any failure thereof or otherwise, and in no event will the State of Alaska's liability to the Requestor or anyone else exceed the fee paid for the electronic product or service.