

ALASKA DIVISION OF GEOLOGICAL & GEOPHYSICAL SURVEYS

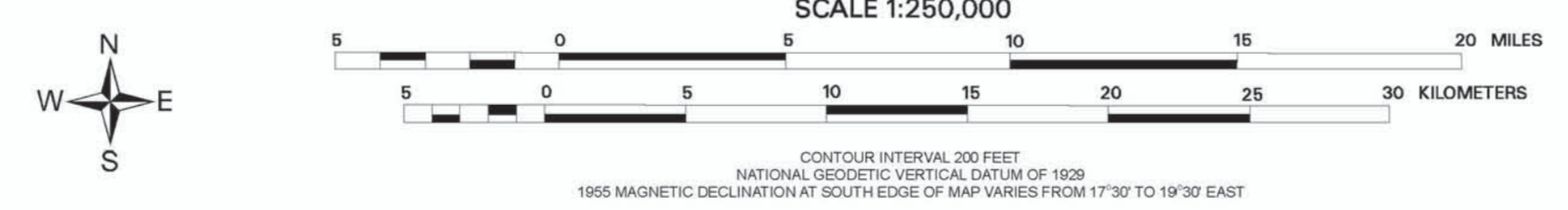
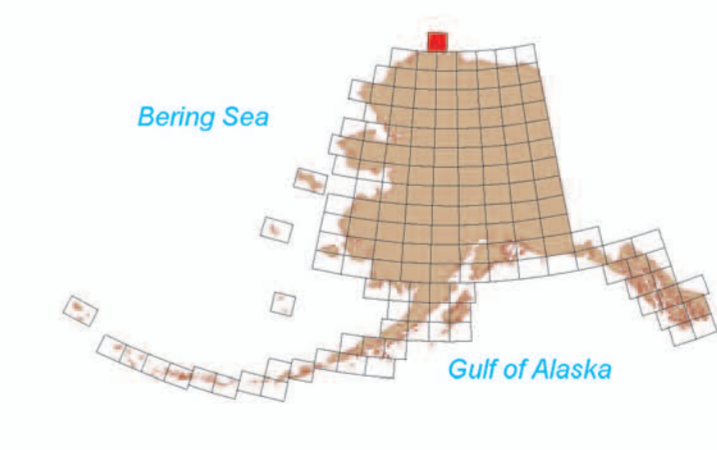
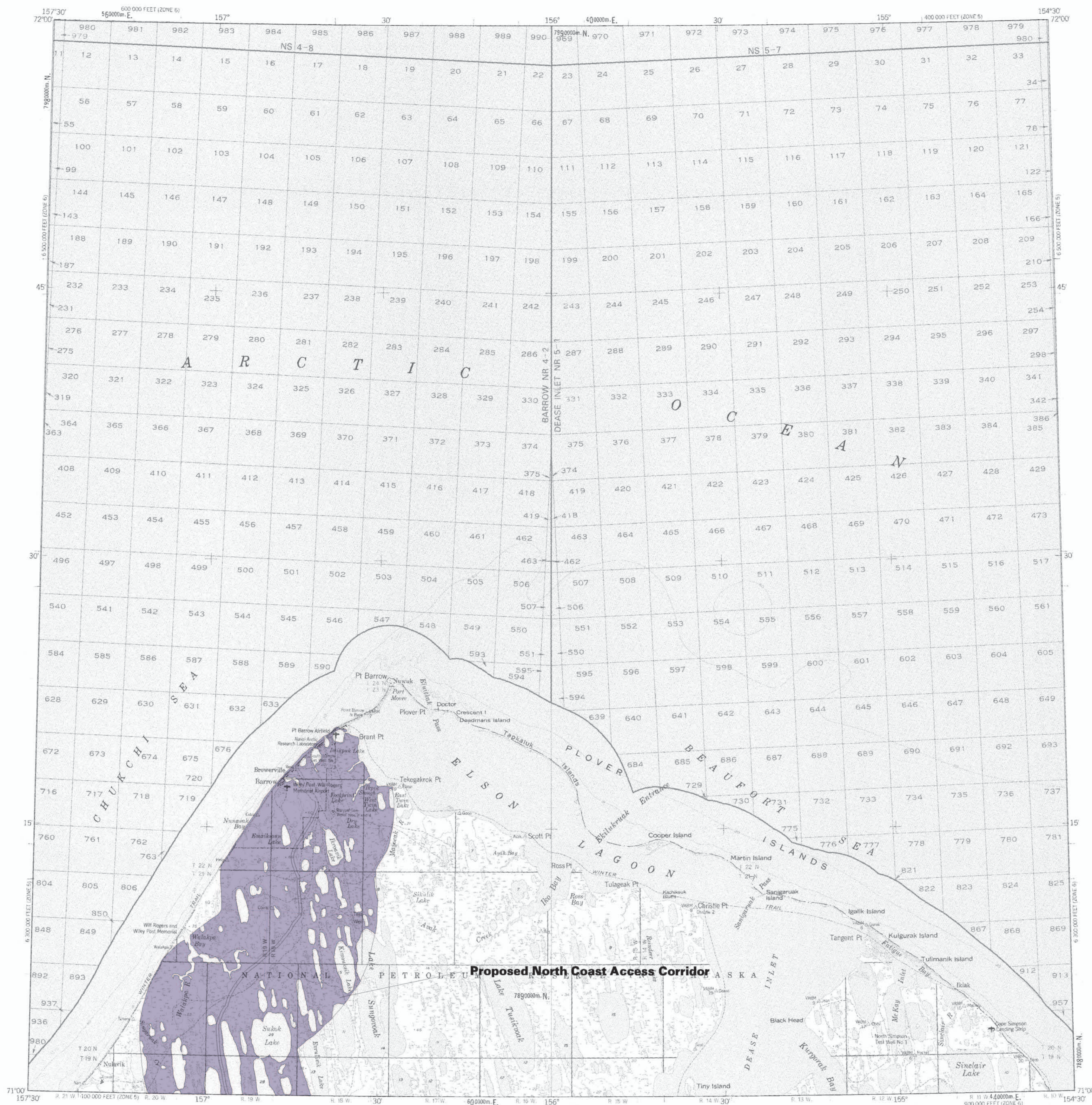
MISCELLANEOUS PUBLICATION 48b  
Reger and others (2003)  
Explanatory booklet published separately as MP 129

DESCRIPTION OF MAP UNITS

Moderate - A 1:250,000- or 1:125,000-scale geologic map is available; known to be generally reliable because of limited field observations, a few laboratory tests, or both; interpretation of 1:65,000- or larger scale aerial photographs is not verified by field observations.

MAP SOURCES

Williams, J.R., and Carter, L.D., 1984, Engineering-geologic maps of northern Alaska, Barrow Quadrangle, U.S. Geological Survey Open-File Report 84-124, 39 p., scale 1:250,000, 2 sheets.



DATA QUALITY ASSESSMENT OF GEOLOGIC MAPPING ALONG PROPOSED TRANSPORTATION CORRIDORS IN THE BARROW QUADRANGLE, ALASKA

compiled by  
R.D. Reger, D.S.P. Stevens, and R.L. Smith  
2003



The State of Alaska makes no express or implied warranties (including warranties for merchantability and fitness) with respect to the character, functions, or capabilities of the electronic products or services or their appropriateness for any user's purposes. In no event will the State of Alaska be liable for any incidental, indirect, special, consequential or other damages suffered by the user or any other person or entity whether from use of the electronic products or services, any failure thereof or otherwise, and in no event will the State of Alaska's liability to the Requestor or anyone else exceed the fee paid for the electronic product or service.