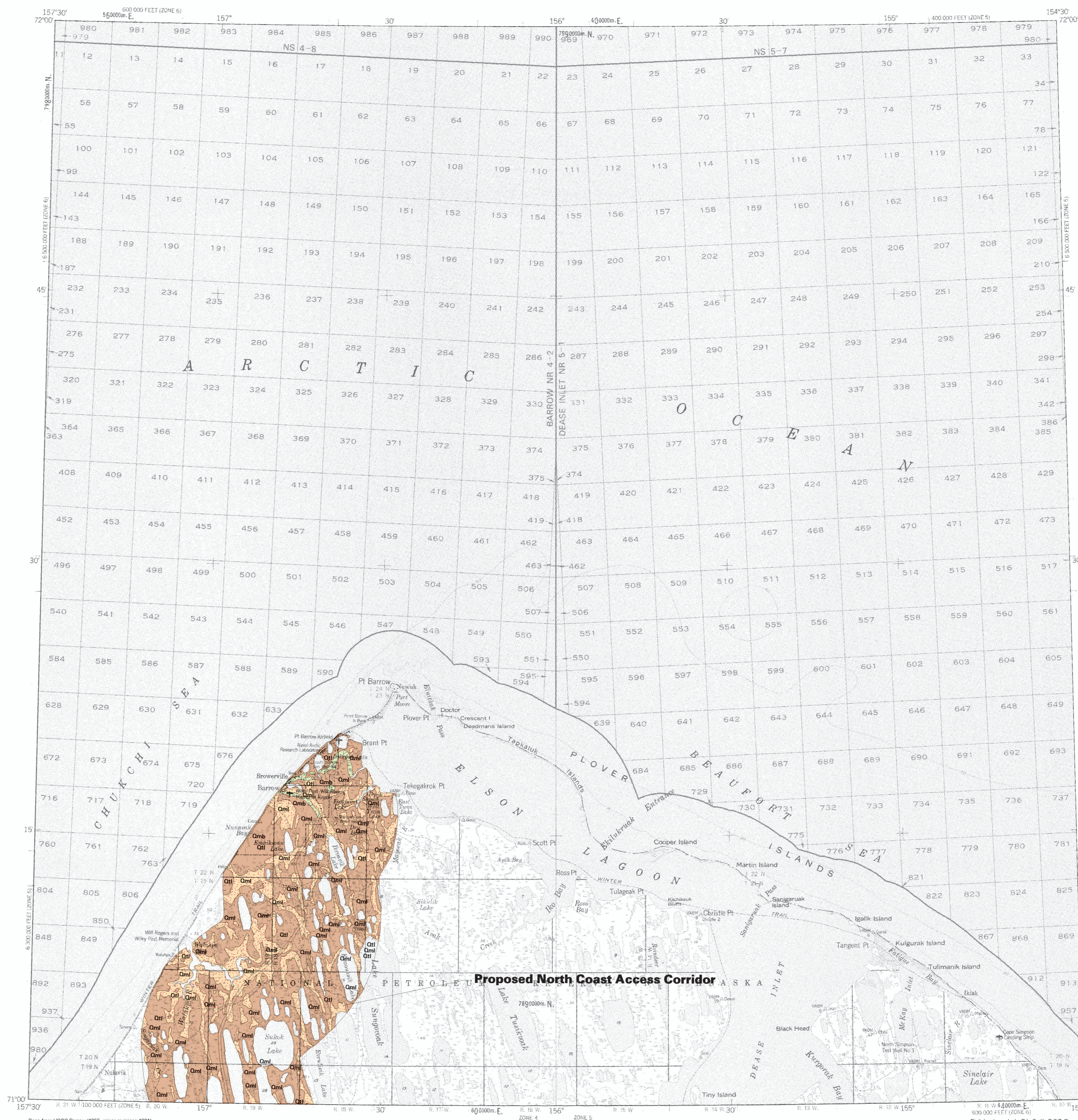


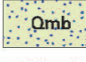


ALASKA DIVISION OF GEOLOGICAL & GEOPHYSICAL SURVEYS

MISCELLANEOUS PUBLICATION 48d
Reger and others (2003)
Explanatory booklet published separately as MP 129



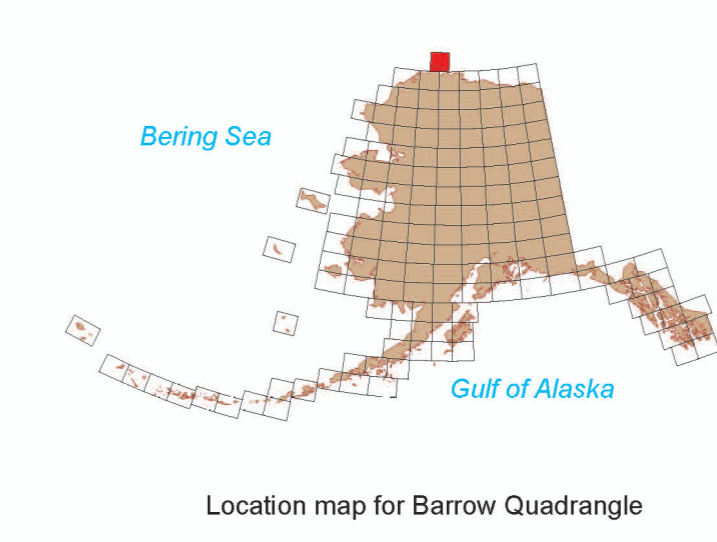
DESCRIPTION OF MAP UNITS

UNCONSOLIDATED DEPOSITS

-  Lacustrine and Marine Deposits
-  Deltaic and lagoonal deposits
-  Thaw-lake deposits

MAP SOURCES

Williams, J.R., and Carter, L.D., 1984, Engineering-geologic maps of northern Alaska, Barrow Quadrangle, U.S. Geological Survey Open-File Report 84-124, 39 p., scale 1:250,000, 2 sheets.



GEOLOGIC MAP OF PROPOSED TRANSPORTATION CORRIDORS
IN THE BARROW QUADRANGLE, ALASKA

compiled by
R.D. Reger, D.S.P. Stevens, and R.L. Smith
2003

The State of Alaska makes no express or implied warranties (including warranties for merchantability and fitness) with respect to the character, functions, or capabilities of the electronic products or services or their appropriateness for any user's purposes. In no event will the State of Alaska be liable for any incidental, indirect, special, consequential or other damages suffered by the user or any other person or entity whether from use of the electronic products or services, any failure thereof or otherwise, and to no extent will the State of Alaska's liability to the Requestor or anyone else exceed the fee paid for the electronic product or service.