

DESCRIPTION OF MAP UNITS

UNCONSOLIDATED DEPOSITS

- Alluvial Deposits
- Qa** Undifferentiated alluvium
  - Qaf** Alluvial-fan deposits
  - Qat** Terrace alluvium
- Colluvial Deposits
- Qc** Undifferentiated colluvium
  - Qcl** Landslide deposits
- Lacustrine and Marine Deposits
- ql** Undifferentiated lacustrine deposits
- Glacial Deposits
- Qd** Undifferentiated drift
- Other Surficial Deposits
- Qs** Swamp deposits

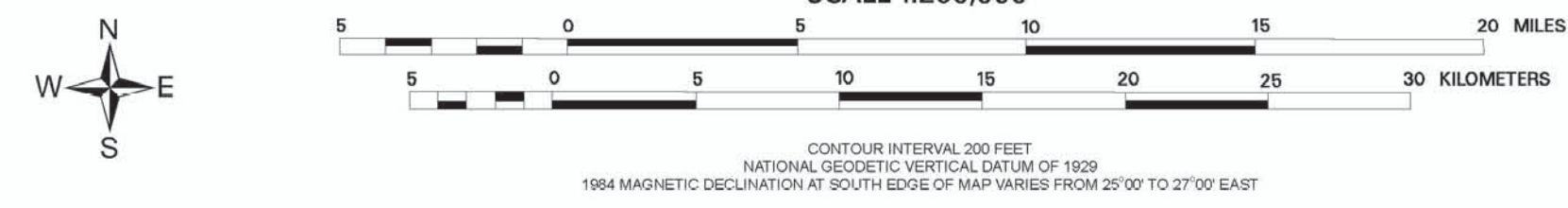
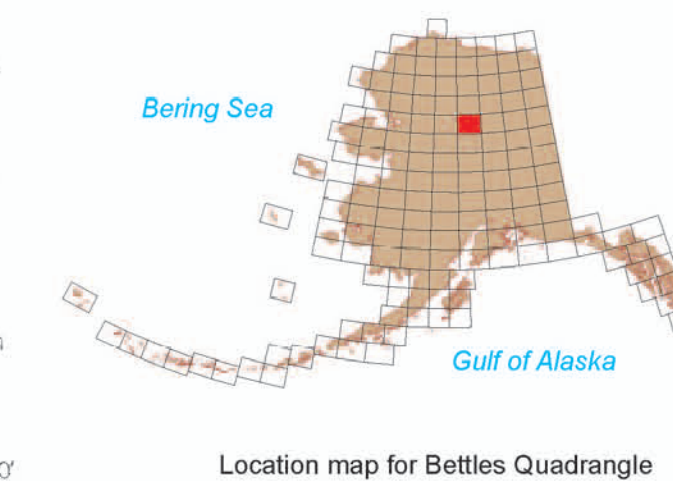
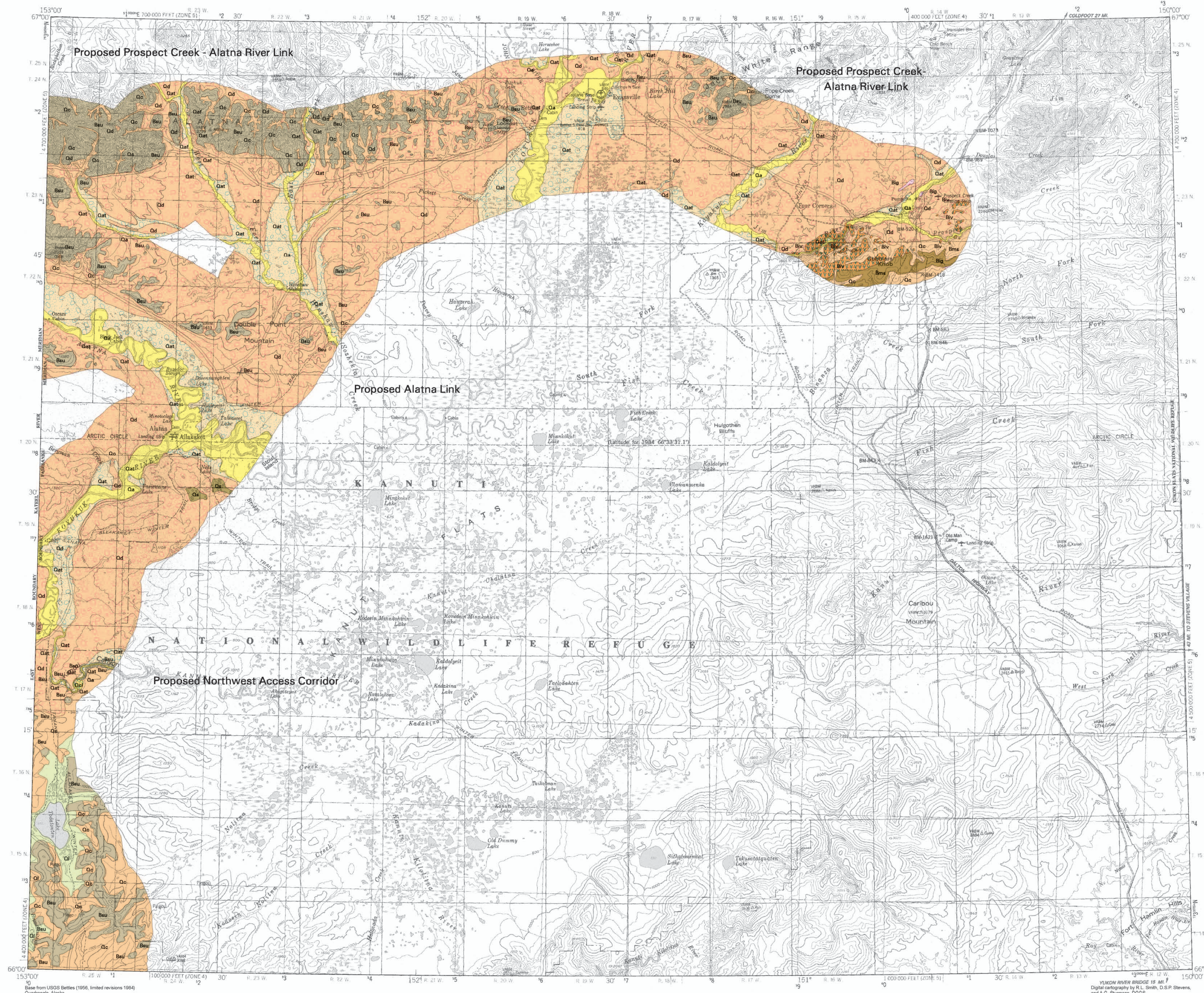
BEDROCK

- Igneous Rocks
- Ig** Granitic rocks, coarse-grained gneiss, migmatite
  - Iv** Volcanic rocks
- Sedimentary Rocks
- Su** Undifferentiated sedimentary rocks
- Metamorphic Rocks
- Sm** Schist, serpentine

MAP SOURCES

Patton, W.W., Jr., and Miller, T.P., 1973, Bedrock geologic map of Bettles and southern part of Whismen Quadrangles, Alaska, U.S. Geological Survey Miscellaneous Field Studies Map MF-492, scale 1:250,000, 1 sheet.

Reger, R.D., 1992, photointerpretation.



GEOLOGIC MAP OF PROPOSED TRANSPORTATION CORRIDORS  
 IN THE BETTLES QUADRANGLE, ALASKA

compiled by  
 R.D. Reger, K.M. Campbell, D.S.P. Stevens, and R.L. Smith  
 2003



The State of Alaska makes no express or implied warranties (including warranties for merchantability and fitness) with respect to the character, functions, or capabilities of the electronic products or services or their appropriateness for any user's purposes. In no event will the State of Alaska be liable for any incidental, indirect, special, consequential or other damages suffered by the user or any other person or entity whether from use of the electronic products or services, any failure thereof or otherwise, and in no event will the State of Alaska's liability to the Requestor or anyone else exceed the fee paid for the electronic product or service.