

DESCRIPTION OF MAP UNITS

UNCONSOLIDATED DEPOSITS

- GM** Chiefly (estimated greater than 80%) clean sand and gravel. Rare oversized material. Includes GW and GP (Unified Soil Classification).
- GS** Mixed coarse and fine material. Estimated 20-80% coarse, granular deposits with considerable oversized material. Includes GM and GC (Unified Soil Classification).
- SA** Chiefly (estimated 80%) sand. Includes SW and SP (Unified Soil Classification).
- SM** Chiefly fine materials. Estimated greater than 80% sand, silt, and clay. Includes SM, SC, ML, MH, CL, and CH (Unified Soil Classification).
- OR** Chiefly organic materials. Estimated greater than 50% peat, organic sand, or organic silt. Includes Pt (Unified Soil Classification).

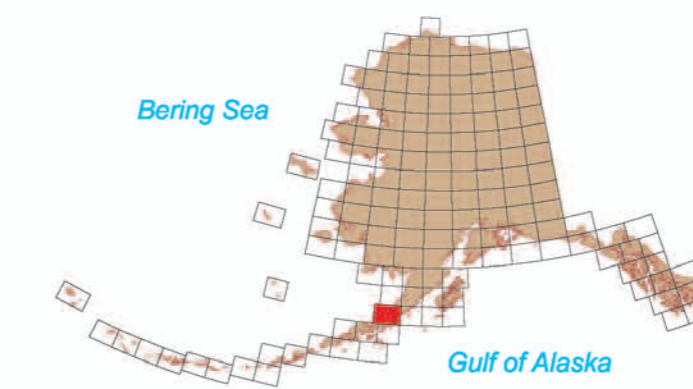
BEDROCK

- BC** Coarse-jointed, coarse-grained igneous lithologies. May be deeply weathered.
- BM** Medium-jointed, fine- to medium-grained quartzose sedimentary rocks and their metamorphic equivalents. May be deeply weathered.
- BV** Medium-jointed, fine-grained igneous rocks and their metamorphic equivalents. May be deeply weathered.
- BU** Undifferentiated bedrock lithologies. May be deeply weathered.

MAP SOURCES

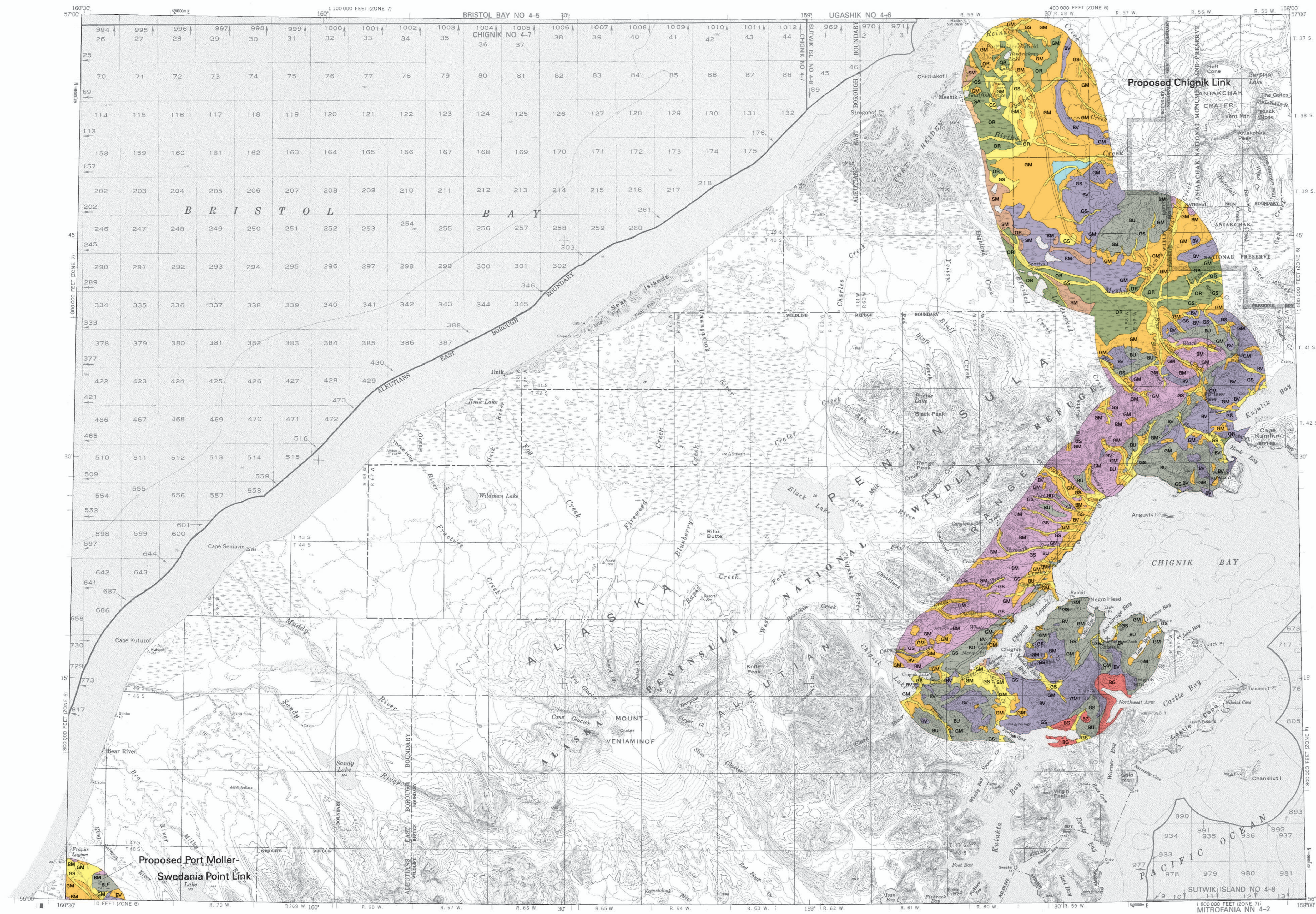
Detterman, R.L., Miller, T.P., Yount, M.E., and Wilson, F.H., 1981a, Geologic map of the Chignik and Sutwik Island Quadrangles, Alaska: U.S. Geological Survey Miscellaneous Investigations Map I-1229, scale 1:250,000, 1 sheet.

Detterman, R.L., Miller, T.P., Yount, M.E., and Wilson, F.H., 1981b, Quaternary geologic map of the Chignik and Sutwik Island Quadrangles, Alaska: U.S. Geological Survey Miscellaneous Investigations Map I-1292, scale 1:250,000, 1 sheet.

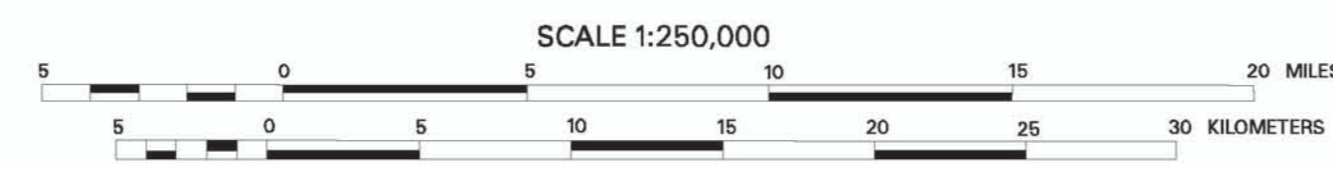


Location map for Chignik Quadrangle

The State of Alaska makes no express or implied warranties (including warranties for merchantability and fitness) with respect to the character, functions, or capabilities of the electronic products or services or their appropriateness for any user's purposes. In no event will the State of Alaska be liable for any incidental, indirect, special, consequential or other damages suffered by the user or any other person or entity whether from use of the electronic products or services, any failure thereof or otherwise, and in no event will the State of Alaska's liability to the Requestor or anyone else exceed the fee paid for the electronic product or service.



Base from USGS Chignik (1961, limited revisions 1993) Quadrangle, Alaska



SCALE 1:250,000  
CONTOUR INTERVAL 200 FEET  
NATIONAL GEODETIC VERTICAL DATUM OF 1989  
1980 MAGNETIC DECLINATION AT SOUTH EDGE OF MAP VARIES FROM 1°00' TO 1°00' EAST

DERIVATIVE GEOLOGIC-MATERIALS MAP OF PROPOSED TRANSPORTATION CORRIDORS  
IN THE CHIGNIK QUADRANGLE, ALASKA

compiled by

R.D. Reger, K.M. Campbell, D.S.P. Stevens, and R.L. Smith

2003

