



DESCRIPTION OF MAP UNITS

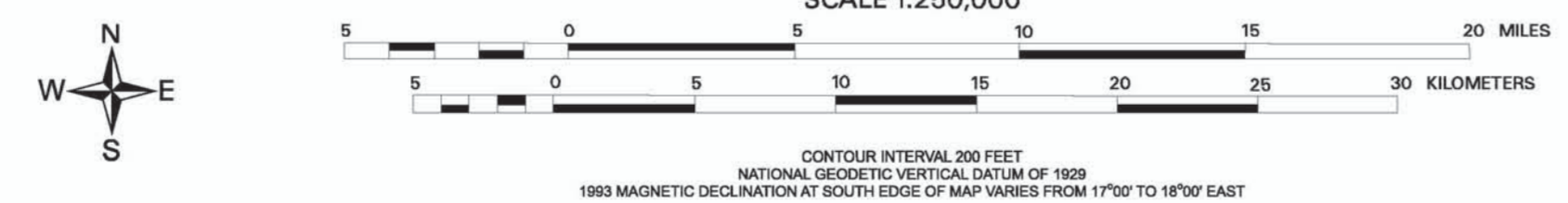
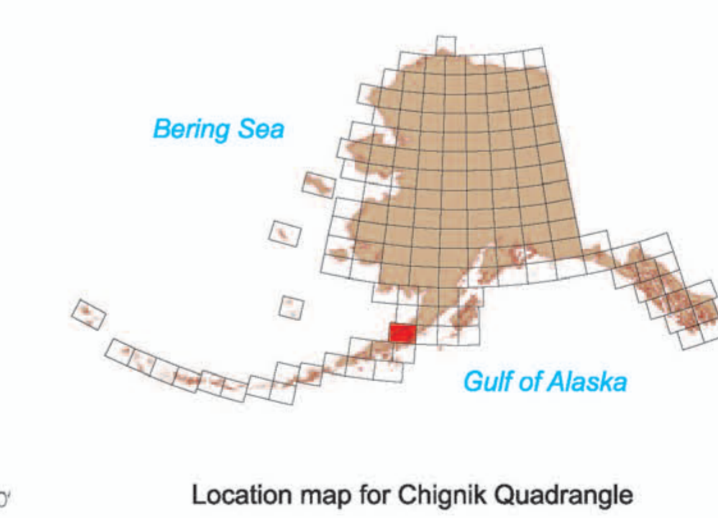
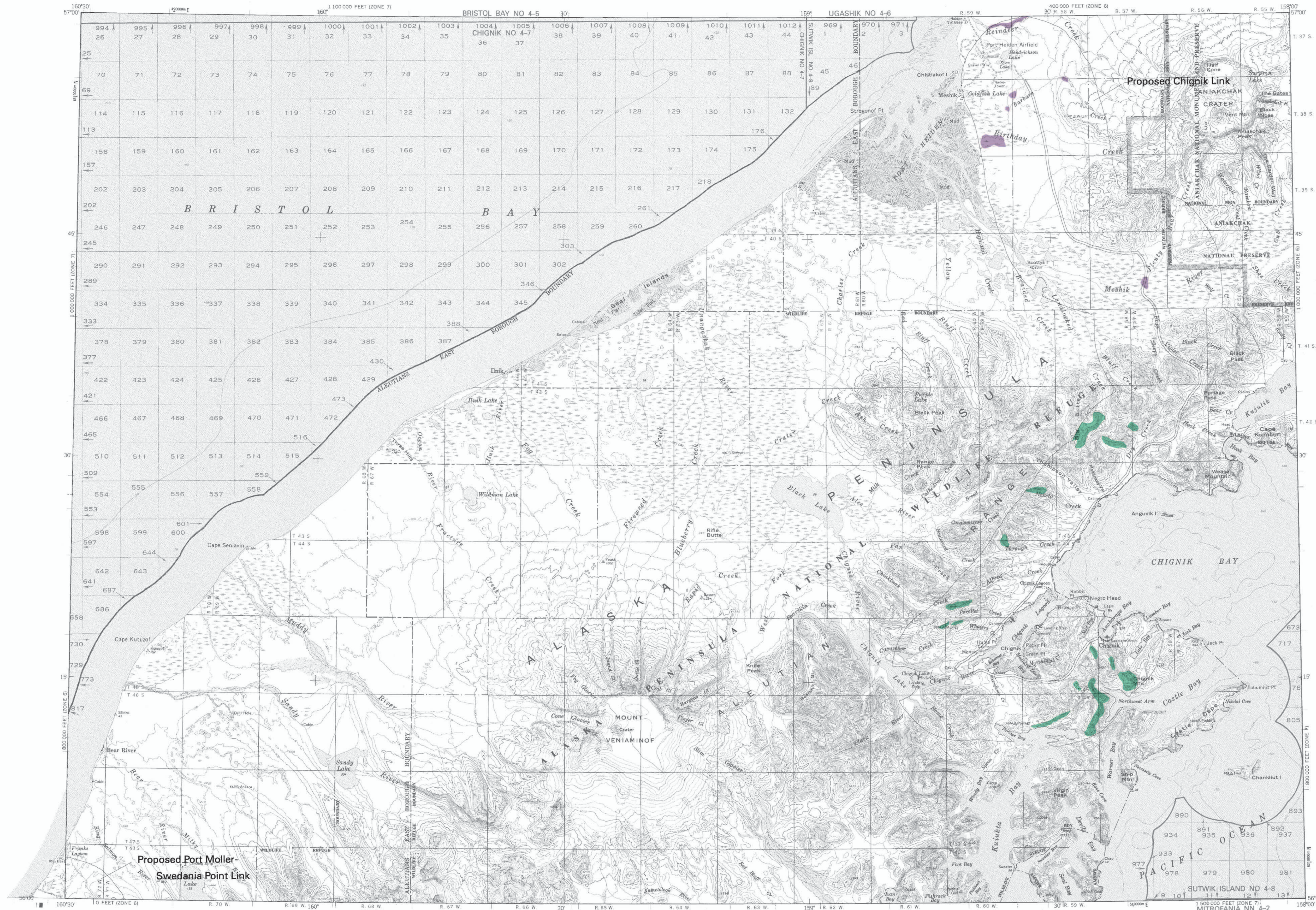
-  Snow avalanches - Significant potential for snow avalanches based on the presence of steep topography.
-  Naleds - Area susceptible to winter buildup of thick seasonal icing sheets (naleds).

PERMAFROST

Perennially frozen ground is not present in this quadrangle.

MAP SOURCES

- Dean, K.G., 1984a, Stream-icing zones in Alaska: Alaska Division of Geological & Geophysical Surveys Report of Investigations 84-16, 20 p., scale 1:250,000, 102 sheets.
- Post, Austin, and Mayo, L.R., 1971, Glacier dammed lakes and outburst floods in Alaska: U.S. Geological Survey Hydrologic Investigations Atlas HA-455, 9 p., scale 1:1,000,000, 3 sheets.
- Reger, R.D., 1992 map interpretation.



MAP OF POTENTIAL GEOLOGIC HAZARDS ALONG PROPOSED TRANSPORTATION CORRIDORS  
IN THE CHIGNIK QUADRANGLE, ALASKA: PART 2, ADDITIONAL HAZARDS

compiled by  
R.D. Reger  
2003



The State of Alaska makes no express or implied warranties (including warranties for merchantability and fitness) with respect to the character, functions, or capabilities of the electronic products or services or their appropriateness for any user's purposes. In no event will the State of Alaska be liable for any incidental, indirect, special, consequential or other damages suffered by the user or any other person or entity whether from use of the electronic products or services, any failure thereof or otherwise, and in no event will the State of Alaska's liability to the Requestor or anyone else exceed the fee paid for the electronic product or service.