




DESCRIPTION OF MAP UNITS

 Snow avalanches - Significant potential for snow avalanches based on the presence of steep topography.

PERMAFROST

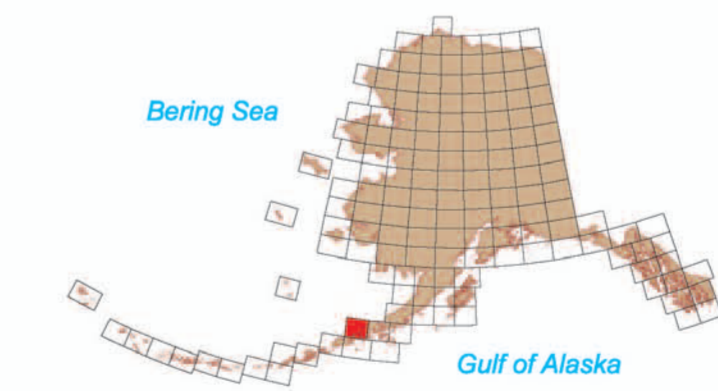
Perennially frozen ground is not present in this quadrangle.

MAP SOURCES

Dean, K.G., 1984a, Stream-icing zones in Alaska: Alaska Division of Geological & Geophysical Surveys Report of Investigations 84-16, 20 p., scale 1:250,000, 102 sheets.

Post, Austin, and Mayo, L.R., 1971, Glacier dammed lakes and outburst floods in Alaska: U.S. Geological Survey Hydrologic Investigations Atlas HA-455, 9 p., scale 1:1,000,000, 3 sheets.

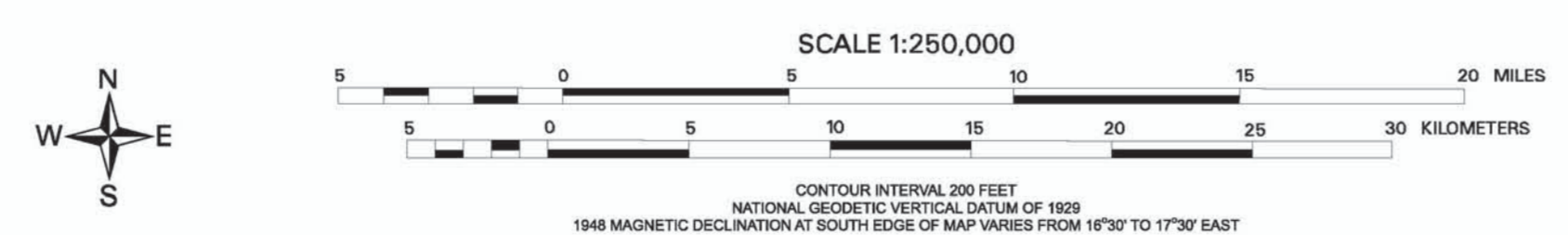
Reger, R.D., 1992 map interpretation.



Location map for Cold Bay Quadrangle

Base from USGS Cold Bay (1943, limited revisions 1975) Chukotka, Alaska

Digital cartography by R.L. Smith, D.S.P. Stevens, and A.D. Burman, 2003



MAP OF POTENTIAL GEOLOGIC HAZARDS ALONG PROPOSED TRANSPORTATION CORRIDORS
IN THE COLD BAY QUADRANGLE, ALASKA: PART 2, ADDITIONAL HAZARDS

compiled by
R.D. Reger
2003



The State of Alaska makes no express or implied warranties (including warranties for merchantability and fitness) with respect to the character, functions, or capabilities of the electronic products or services or their appropriateness for any user's purposes. In no event will the State of Alaska be liable for any incidental, indirect, special, consequential or other damages suffered by the user or any other person or entity whether from use of the electronic products or services, any failure thereof or otherwise, and to no extent will the State of Alaska's liability to the Requestor or anyone else exceed the fee paid for the electronic product or service.