

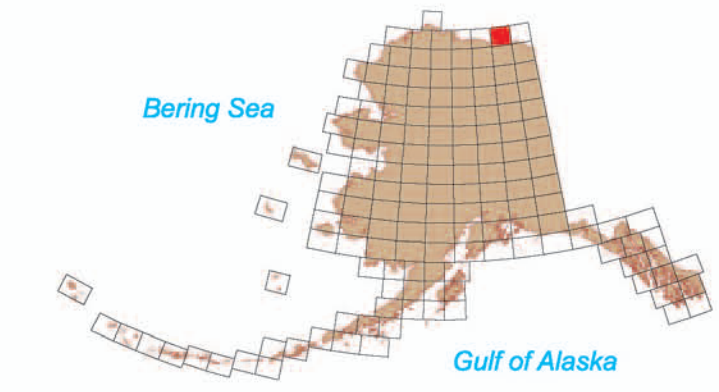
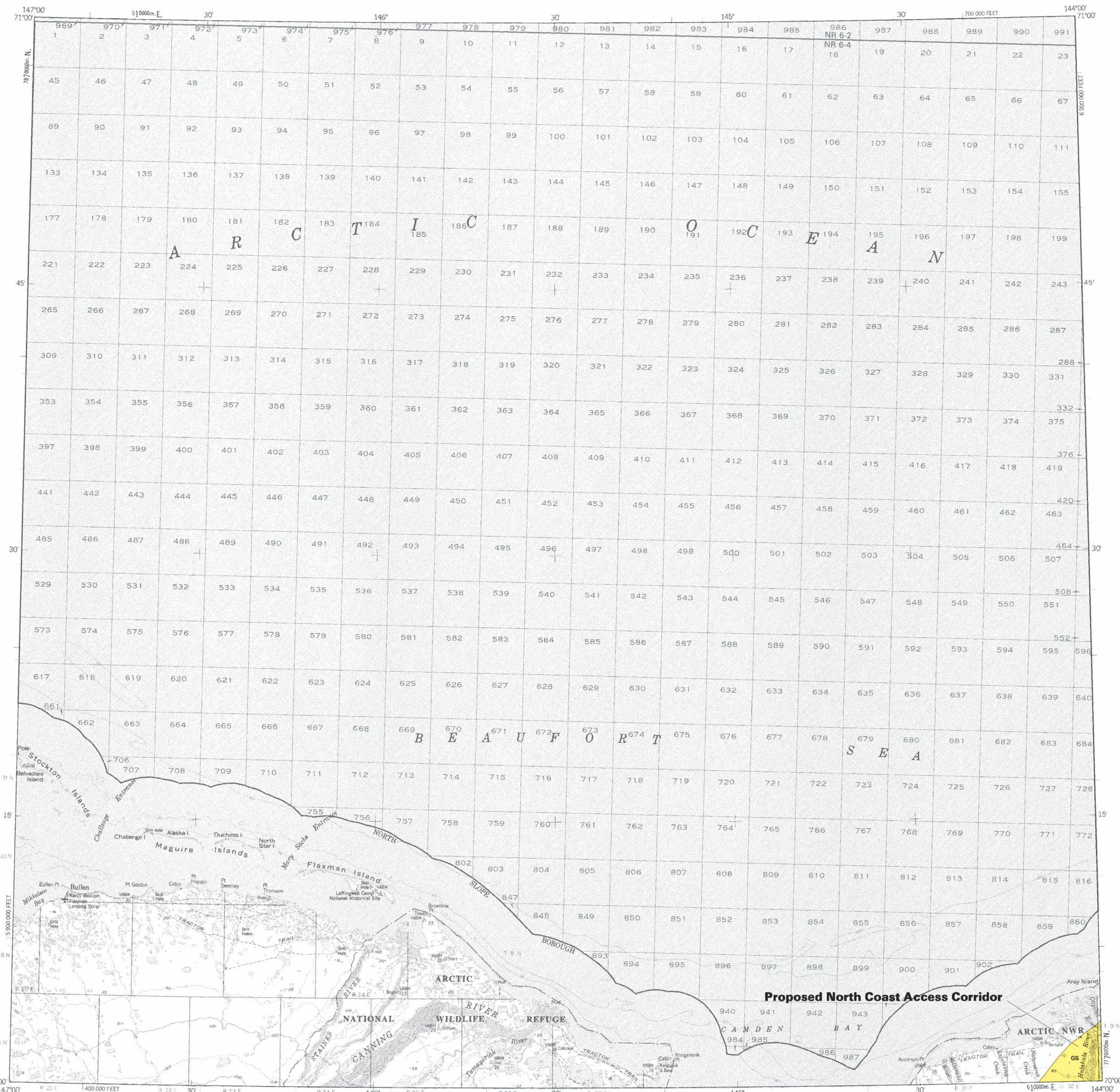
DESCRIPTION OF MAP UNITS

UNCONSOLIDATED DEPOSITS

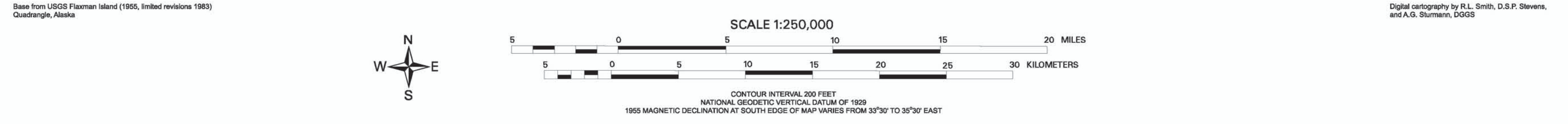
05 Mixed coarse and fine material. Estimated 20-80% coarse, granular deposits with considerable oversized material. Includes GM and GC (Unified Soil Classification).

MAP SOURCES

Carter, L.D., Ferrans, O.J., Jr., and Galloway, J.P., 1986, Engineering-geologic maps of northern Alaska, coastal plain and foothills of the Arctic National Wildlife Refuge, U.S. Geological Survey Open-File Report 86-334, 9 p., scale 1:250,000, 2 sheets.



Location map for Flaxman Island Quadrangle



DERIVATIVE GEOLOGIC-MATERIALS MAP OF PROPOSED TRANSPORTATION CORRIDORS
IN THE FLAXMAN ISLAND QUADRANGLE, ALASKA

compiled by
D.S.P. Stevens and R.L. Smith
2003

The State of Alaska makes no express or implied warranties (including warranties for merchantability and fitness) with respect to the character, functions, or capabilities of the electronic products or services or their appropriateness for any user's purposes. In no event will the State of Alaska be liable for any incidental, indirect, special, consequential or other damages suffered by the user or any other person or entity whether from use of the electronic products or services, any failure thereof or otherwise, and in no event will the State of Alaska's liability to the Requestor or anyone else exceed the fee paid for the electronic product or service.