

DESCRIPTION OF MAP UNITS

UNCONSOLIDATED DEPOSITS

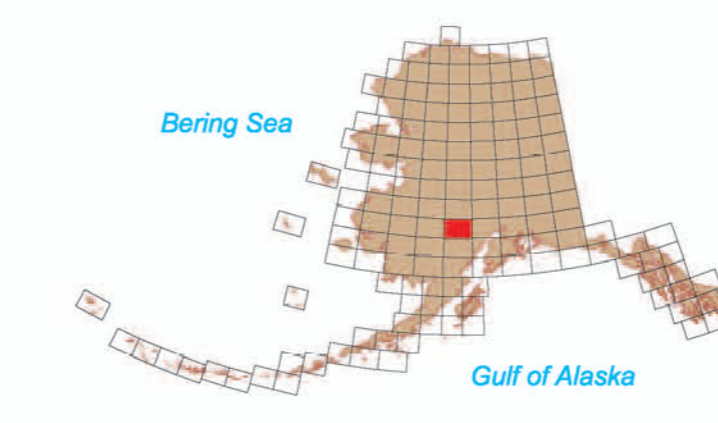
- GM** Chiefly (estimated greater than 80%) clean sand and gravel. Rare oversized material. Includes GW and GP (Unified Soil Classification).
- GS** Mixed coarse and fine material. Estimated 20-80% coarse granular deposits with considerable oversized material. Includes GM and GC (Unified Soil Classification).
- SA** Chiefly (estimated 80%) sand. Includes SW and SP (Unified Soil Classification).
- OR** Chiefly organic materials. Estimated greater than 50% peat, organic sand, or organic silt. Includes Pt (Unified Soil Classification).

BEDROCK

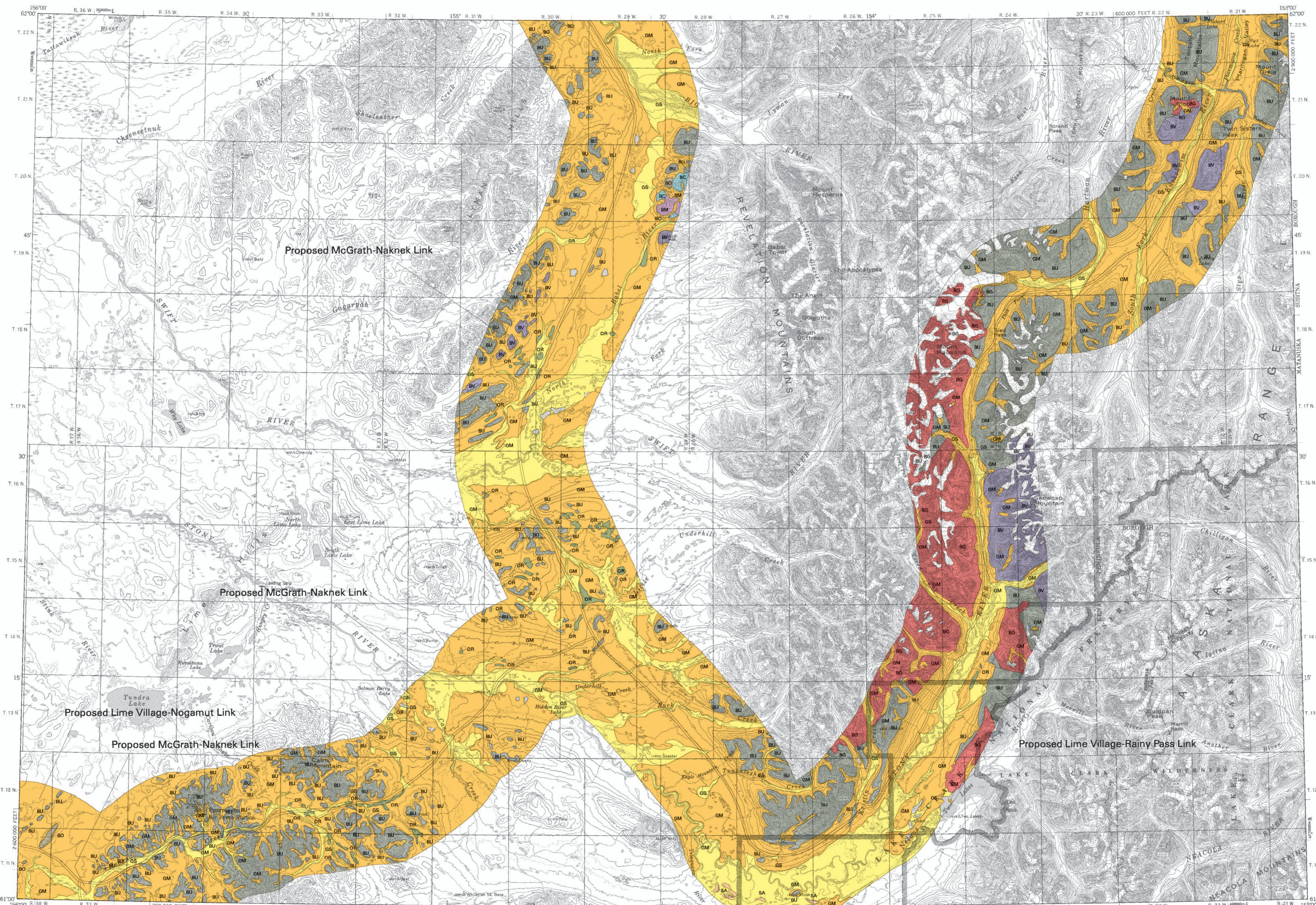
- BC** Medium-jointed, fine- to coarse-grained sedimentary carbonate rocks and their metamorphic equivalents. May be deeply weathered.
- BG** Coarse-jointed, coarse-grained igneous lithologies. May be deeply weathered.
- BM** Medium-jointed, fine- to medium-grained quartzose sedimentary rocks and their metamorphic equivalents. May be deeply weathered.
- BV** Medium-jointed, fine-grained igneous rocks and their metamorphic equivalents. May be deeply weathered.
- BO** All other lithologies. May be deeply weathered.
- BU** Undifferentiated bedrock lithologies. May be deeply weathered.

MAP SOURCES

- Capps, S.R., 1930, The Chulachamna-Stony region, Alaska: U.S. Geological Survey Bulletin 818B, p. 97-123.
- DGGS, unpublished data, Compilation of geology of the Lime Hills Quadrangle: scale 1:250,000, 1 sheet.
- Gilbert, W.G., 1981, Preliminary geologic map and geochemical data, Chemsuetuk River area, Alaska: Alaska Division of Geological & Geophysical Surveys Open-file Report 153, scale 1:63,360, 1 sheet.
- Gilbert, W.G., Bundtzen, T.K., Kline, J.T., and Laird, G.M., 1990, Preliminary geology and geochemistry of the southwest part of the Lime Hills D-4 Quadrangle, Alaska: Alaska Division of Geological & Geophysical Surveys Report of Investigations 90-6, scale 1:63,360, 1 sheet.
- Reger, R.D., 1992, Photointerpretation and satellite imagery interpretation.
- Weber, F.R., 1961, Reconnaissance engineering geology for selection of highway route from Talkeema to McGrath, Alaska: U.S. Geological Survey Open-file Report 61-169, scale 1:250,000, 15 sheets.

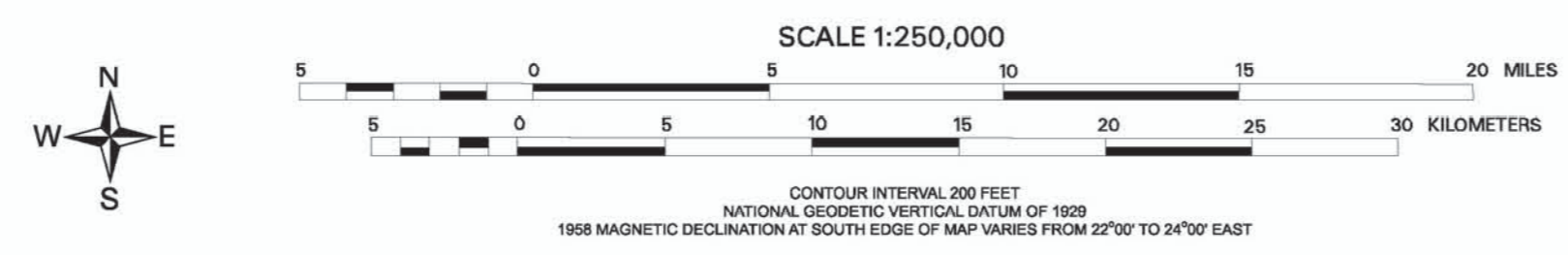


Location map for Lime Hills Quadrangle



Base from USGS Lime Hills (1965, linked revisions 1982) Quadrangle, Alaska

Digital cartography by R.L. Smith, D.S.P. Stevens, and A.G. Stummen, DGGS



DERIVATIVE GEOLOGIC-MATERIALS MAP OF PROPOSED TRANSPORTATION CORRIDORS
 IN THE LIME HILLS QUADRANGLE, ALASKA

compiled by
 R.D. Reger, D.S.P. Stevens, N.D. Bowman, and R.L. Smith
 2003

The State of Alaska makes no express or implied warranties (including warranties for merchantability and fitness) with respect to the character, functions, or capabilities of the electronic products or services or their appropriateness for any user's purposes. In no event will the State of Alaska be liable for any incidental, indirect, special, consequential or other damages suffered by the user or any other person or entity whether from use of the electronic products or services, any failure thereof or otherwise, and in no event will the State of Alaska's liability to the Requestor or anyone else exceed the fee paid for the electronic product or service.

