

DESCRIPTION OF MAP UNITS

UNCONSOLIDATED DEPOSITS

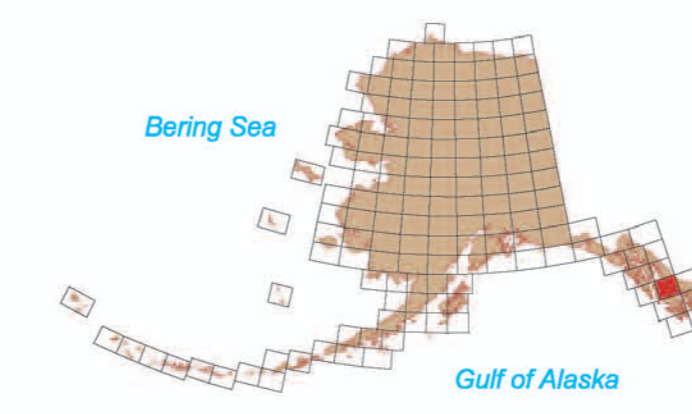
- GM** Chiefly (estimated greater than 80%) clean sand and gravel. Rare oversized material. Includes GW and GP (Unified Soil Classification).
- OS** Mixed coarse and fine material. Estimated 20-80% coarse, granular deposits with considerable oversized material. Includes GM and GC (Unified Soil Classification).
- SM** Chiefly fine materials. Estimated greater than 80% sand, silt, and clay. Includes SM, SC, ML, MH, CL, and CH (Unified Soil Classification).

BEDROCK

- BO** Coarse-jointed, coarse-grained igneous lithologies. May be deeply weathered.
- BV** Medium-jointed, fine-grained igneous rocks and their metamorphic equivalents. May be deeply weathered.
- BD** All other lithologies. May be deeply weathered.
- BU** Undifferentiated bedrock lithologies. May be deeply weathered.

MAP SOURCES

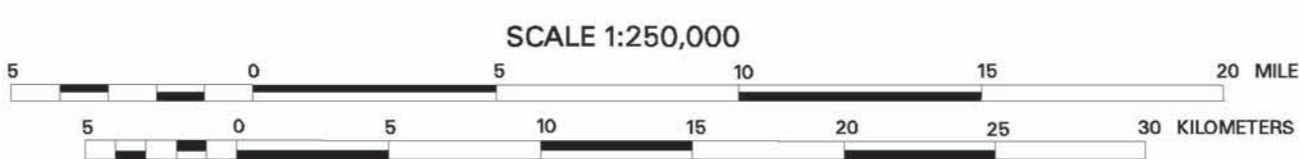
Brew, D.A., Ovenshine, A.T., Karl, S.M., and Hunt, S.J., 1964, Preliminary reconnaissance geologic map of the Petersburg and parts of the Port Alexander and Sumdum 1:250,000 Quadrangles, southeastern Alaska: U.S. Geological Survey Open-File Report 84-405, 43 p., scale 1:250,000, 2 sheets.



Location map for Petersburg Quadrangle

Base from USGS Petersburg (1960) Quadrangle, Alaska

Digital cartography by R.L. Smith, D.S.P. Stevens, and A.C. Burnham, 5/03



CONTOUR INTERVAL 200 FEET
 NATIONAL GEODETIC VERTICAL DATUM OF 1929
 1960 MAGNETIC DECLINATION AT SOUTH EDGE OF MAP VARIES FROM 29°30' TO 29°20' EAST

DERIVATIVE GEOLOGIC-MATERIALS MAP OF PROPOSED TRANSPORTATION CORRIDORS
 IN THE PETERSBURG QUADRANGLE, ALASKA

compiled by

R.D. Reger, D.S.P. Stevens, and R.L. Smith

2003



The State of Alaska makes no express or implied warranties (including warranties of merchantability and fitness) with respect to the character, functions, or capabilities of the electronic products or services or their appropriateness for any user's purposes. In no event will the State of Alaska be liable for any incidental, indirect, special, consequential or other damages suffered by the user or any other person or entity whether from use of the electronic products or services, any failure thereof or otherwise, and in no event will the State of Alaska's liability to the Requestor or anyone else exceed the fee paid for the electronic product or service.