

DESCRIPTION OF MAP UNITS

Naleds - Area susceptible to winter buildup of thick seasonal icing sheets (naleds).

PERMAFROST

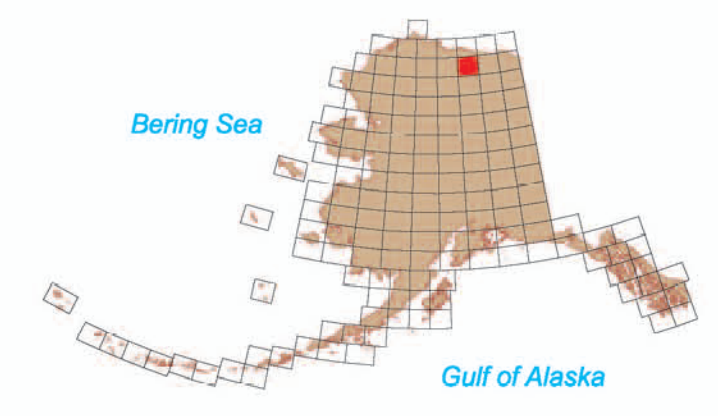
Perennially frozen ground is continuous in this quadrangle.

MAP SOURCES

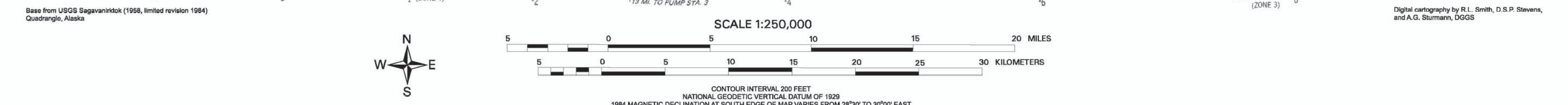
Dean, K.G., 1984a, Stream-icing zones in Alaska: Alaska Division of Geological & Geophysical Survey Report of Investigations 94-16, 20 p., scale 1:250,000, 102 sheets.

Post, Austin, and Mayo, L.R., 1971, Glacier dammed lakes and outburst floods in Alaska: U.S. Geological Survey Hydrologic Investigations Atlas HA-455, 9 p., scale 1:1,000,000, 3 sheets.

Reger, R.D., 1992 map interpretation.



Location map for Sagavanirktok Quadrangle



MAP OF POTENTIAL GEOLOGIC HAZARDS ALONG PROPOSED TRANSPORTATION CORRIDORS IN THE SAGAVANIRKTOK QUADRANGLE, ALASKA: PART 2, ADDITIONAL HAZARDS

compiled by
R.D. Reger
2003



The State of Alaska makes no express or implied warranties (including warranties for merchantability and fitness) with respect to the character, functions, or capabilities of the electronic products or services or their appropriateness for any user's purposes. In no event will the State of Alaska be liable for any incidental, indirect, special, consequential or other damages suffered by the user or any other person or entity whether from use of the electronic products or services, any failure thereof or otherwise, and in no event will the State of Alaska's liability to the Requestor or anyone else exceed the fee paid for the electronic product or service.