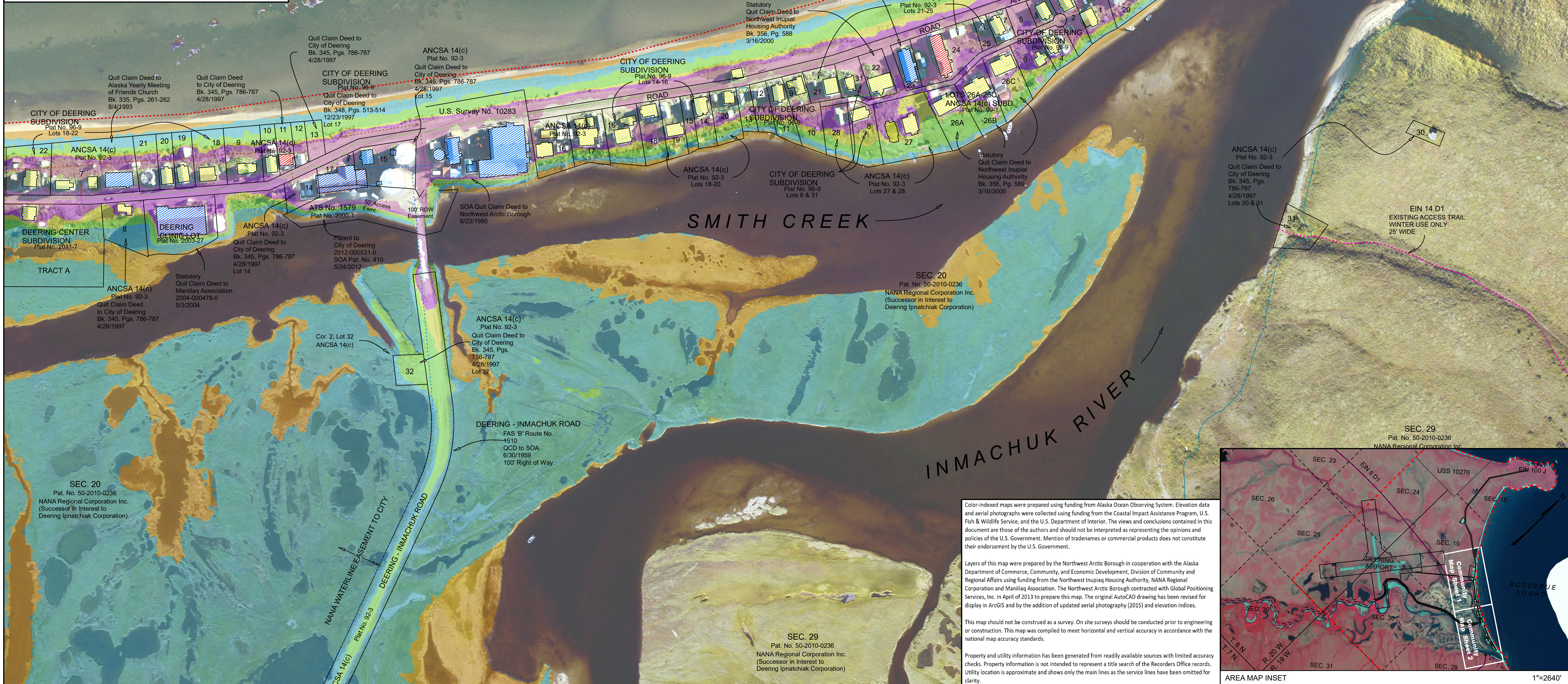
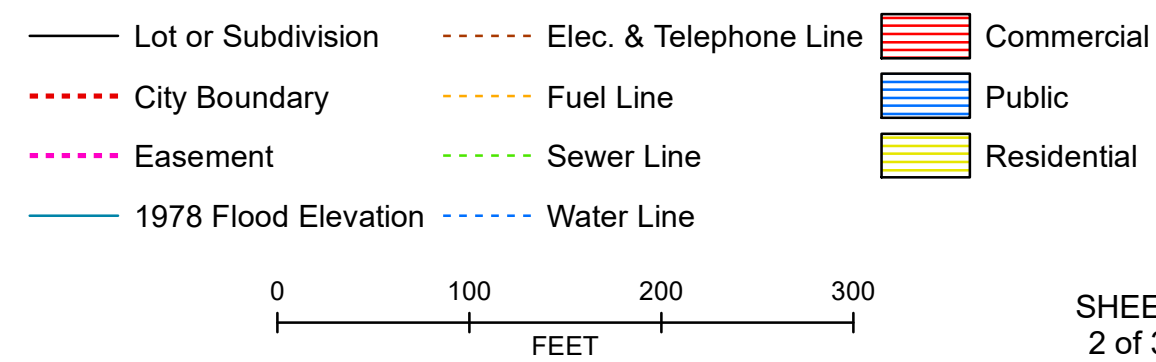


DEERING Color-Indexed Community Map

DGGS MP 154 version 3

66° 04' 27" N 162° 43' 22" W (NAD83)
Township 8 North, Range 19 West, Kateel River Meridian, AK
U.S.G.S. Quadrangles "KOTZEBUE A-2" &
"BENDELEBEN (D-2) & (D-3)", Alaska
KOTZEBUE RECORDING DISTRICT



Color-indexed maps were prepared using funding from Alaska Ocean Observing System. Elevation data and aerial photographs were collected using funding from the Coastal Impact Assistance Program, U.S. Fish & Wildlife Service, and the U.S. Department of Interior. The views and conclusions contained in this document are those of the authors and should not be interpreted as representing the opinions and policies of the U.S. Government. Mention of tradenames or commercial products does not constitute their endorsement by the U.S. Government.

Layers of this map were prepared by the Northwest Arctic Borough in cooperation with the Alaska Department of Commerce, Community, and Economic Development, Division of Community and Regional Affairs using funding from the Northwest Inupiat Housing Authority, NANA Regional Corporation and Maniilaq Association. The Northwest Arctic Borough contracted with Global Positioning Services, Inc. in April of 2013 to prepare this map. The original AutoCAD drawing has been revised for display in ArcGIS and by the addition of updated aerial photography (2015) and elevation indices.

This map should not be construed as a survey. On site surveys should be conducted prior to engineering or construction. This map was compiled to meet horizontal and vertical accuracy in accordance with the national map accuracy standards.

Property and utility information has been generated from readily available sources with limited accuracy checks. Property information is not intended to represent a title search of the Records Office records. Utility location is approximate and shows only the main lines as the service lines have been omitted for clarity.



Elevation intervals on the map are derived from 2015 source data. Temporal changes, human or naturally induced, may have occurred that will cause the elevations depicted on these map figures to no longer represent actual surface conditions.

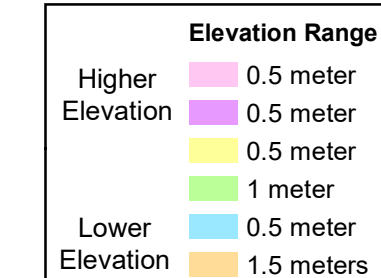
Please note the following disclosures/use limitations:

-These maps illustrate elevation and are not intended for use in the definition of flood zones. Flood levels are not perfectly flat and will not directly correspond to specific elevations.

-Vertical and horizontal accuracies vary by location.

-Best available data sets in Alaska are not always up-to-date. Examples: Houses or infrastructure may have moved since DCRA linework was completed, local engineering projects might raise a road or add a seawall, and/or beach and sand spits may have naturally changed shape.

-Colors are restricted to areas of known elevation. In some cases the best available elevation model does not cover the entire DCRA Community Map area.



Color Key Available as Separate Sheet

Color indices shown to the left define relative vertical elevations. The vertical magnitude for each colored elevation range varies as shown (i.e. orange encompasses a 1.5-meter range of elevations that are the lowest elevations mapped). For up-to-date numerical elevation values associated with each colored elevation range, see key on a separate sheet MP 154 version 3 'Deering Numerical Elevation Table'.

COLOR-INDEXED COMMUNITY MAP DEERING SHEET 2 1"=100' (2015 PHOTOGRAPHY)



Measured Water Levels & Significant Elevations

Color-Indexed Map Elevation Ranges

