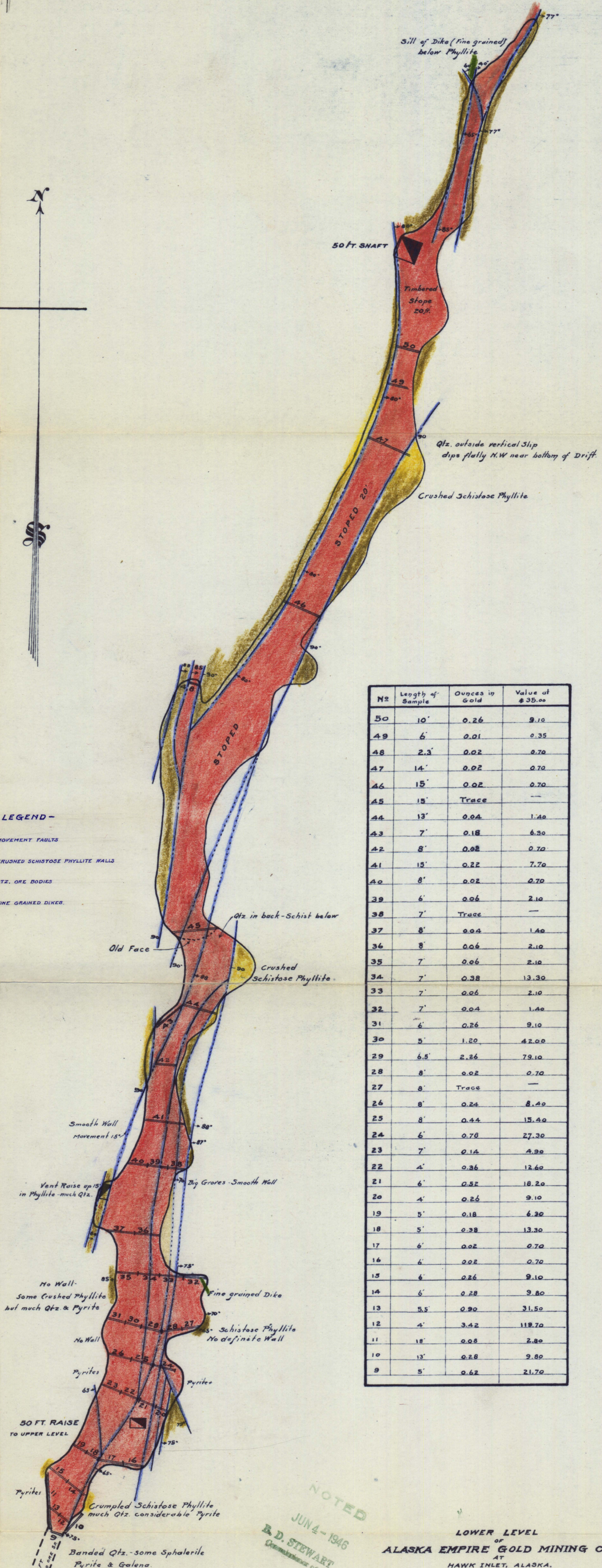




- LEGEND -

- MOVEMENT FAULTS
- CRUSHED SCHISTOSE PHYLLITE WALLS
- QTZ. ORE BODIES
- FINE GRAINED DIKES



No	Length of Sample	Ounces in Gold	Value of \$35.00
50	10'	0.26	9.10
49	6'	0.01	0.35
48	2.3'	0.02	0.70
47	14'	0.02	0.70
46	15'	0.02	0.70
45	15'	Trace	—
44	13'	0.04	1.40
43	7'	0.18	6.30
42	8'	0.02	0.70
41	15'	0.22	7.70
40	8'	0.02	0.70
39	6'	0.06	2.10
38	7'	Trace	—
37	8'	0.04	1.40
36	8'	0.06	2.10
35	7'	0.06	2.10
34	7'	0.38	13.30
33	7'	0.06	2.10
32	7'	0.04	1.40
31	6'	0.26	9.10
30	5'	1.20	42.00
29	6.5'	2.26	79.10
28	8'	0.02	0.70
27	8'	Trace	—
26	8'	0.24	8.40
25	8'	0.44	15.40
24	6'	0.78	27.30
23	7'	0.14	4.90
22	4'	0.36	12.60
21	6'	0.52	18.20
20	4'	0.26	9.10
19	5'	0.18	6.30
18	5'	0.38	13.30
17	6'	0.02	0.70
16	6'	0.02	0.70
15	6'	0.26	9.10
14	6'	0.28	9.80
13	5.5'	0.90	31.50
12	4'	3.42	119.70
11	18'	0.08	2.80
10	13'	0.28	9.80
9	5'	0.62	21.70

NOTE - From face back 90 feet weighted average of Samples (cutting the two highest in half) is 0.40 ozs Au. 19.1 ft wide - or \$1400 (per H.H. Townsend)

NOTED
JUN 4 - 1946
B. D. STEWART
Geologist of Alaska

LOWER LEVEL
OF
ALASKA EMPIRE GOLD MINING CO.
AT
HAWK INLET, ALASKA.

GEOLOGY & ORIGINAL SAMPLING
BY H.H. TOWNSEND - Aug. 1941.

Scale - 1 inch = 20 ft.

F. H. Metcalf, May 1946