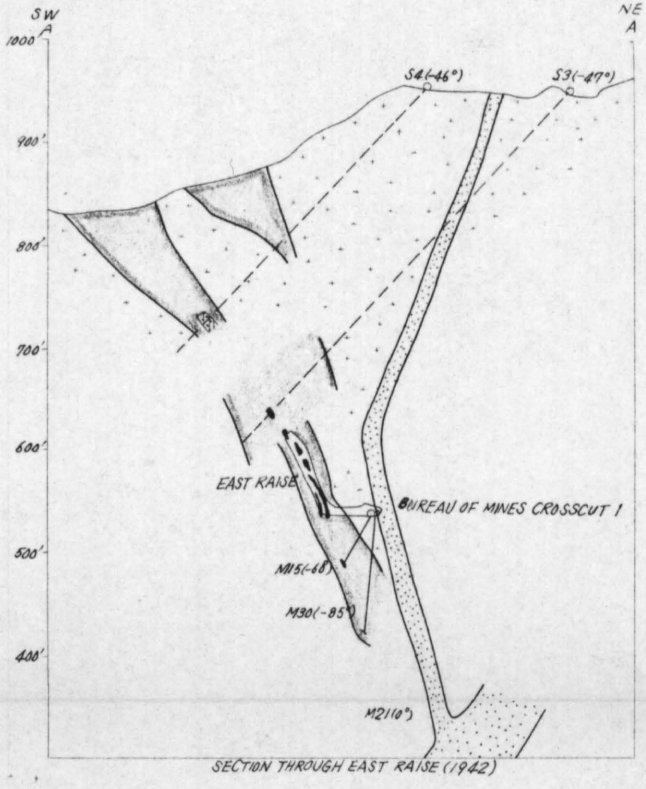
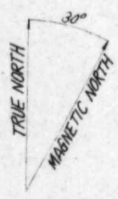


INTERNATIONAL BOUNDARY 5 MILES



- BUNKHOUSE
- WATER TANK
- LINDBERGB TUNNEL ALT 402' PORTAL GLORY HOLE
- WATER TANK
- BLACKSMITH SHOP
- MILL
- POWERHOUSE
- OFFICE
- MILL LEVEL PORTAL ALT 320'

EXPLANATION

- malchite
- granodiorite porphyry Related to Hyder Monzonite
- Texas Creek granodiorite
- diorite
- quartz vein showing dip
- 1 Scheelite ore
- 2 sparsely distributed scheelite
- Lindeborg Shear zone
- contact Dashed where approximately located
- Fault Dashed where inferred strike and dip of schistosity
- shaft
- Bureau of Mines diamond-drill hole showing number, inclination and direction
- Open cut
- Dump

GEOLOGIC MAP OF THE LINDBERGB SHEAR ZONE RIVERSIDE MINE HYDER DISTRICT ALASKA

50 200 Feet  
 Contour interval 50 Feet  
 Datum approximate mean sea level

Geology and topography by F.M. Byers Jr and Clyde Wahrhaftig 1942