

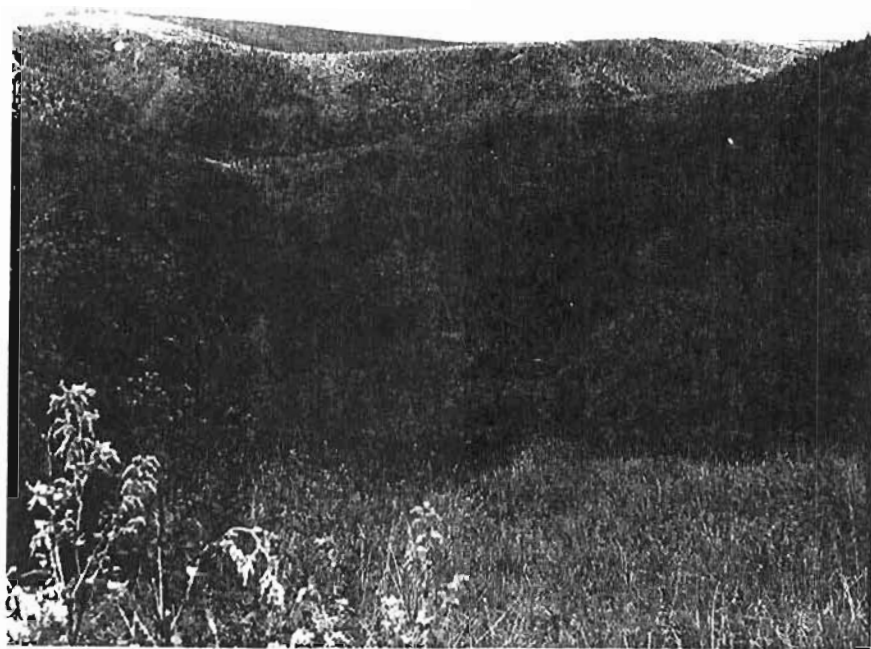
STATE OF ALASKA
DEPARTMENT OF NATURAL RESOURCES
DIVISION OF MINES AND MINERALS

PHOTOGRAPHS TAKEN ALONG THE EUREKA-RAMPART TRAIL

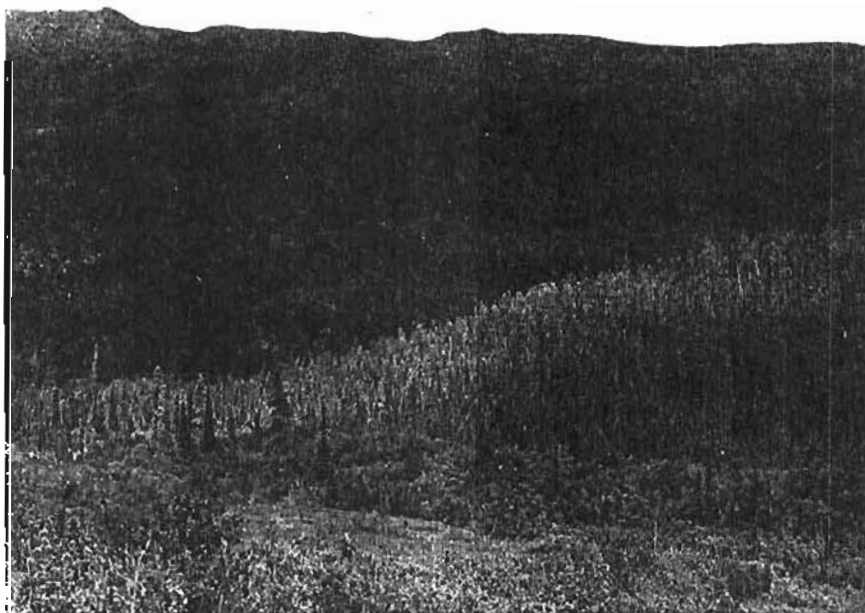
by

Robert H. Samnders
State Mining Engineer

August 1960



1.



2.

See Index Map in Folder



3.



4.



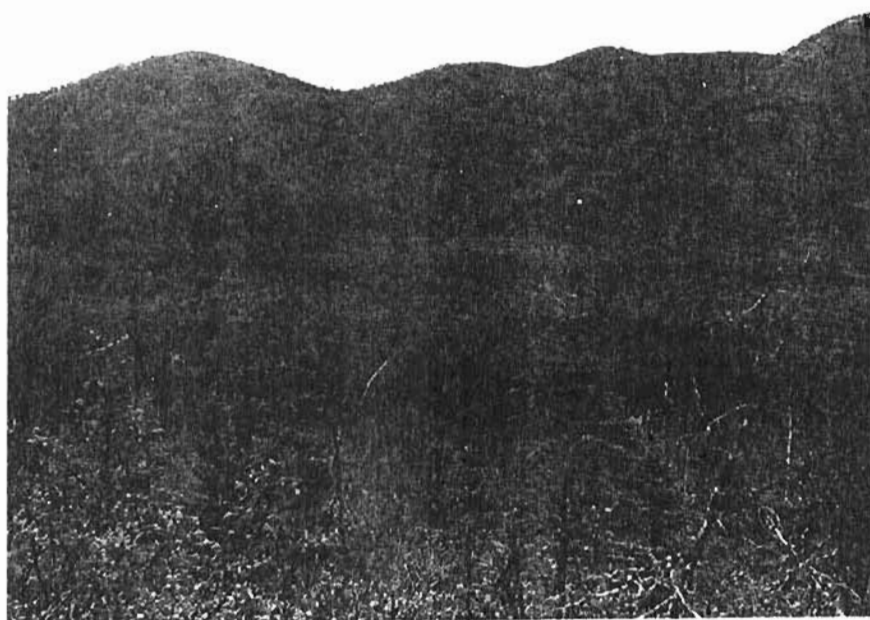
5.



6.



7.



8.



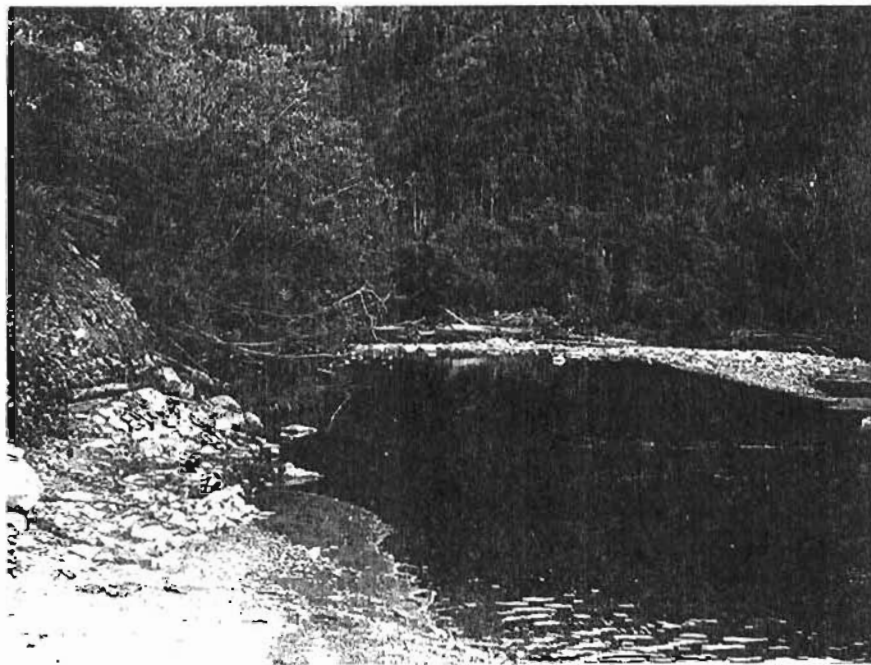
9.



10.



11. Remains of a bridge - typical of several small bridges between Slate Creek and Little Minook Creek.



12. Where the trail crosses Minook Creek: remains of bridge abutment on left.



13.



14. Relief cabin, formerly property of the Alaska Road Commission.
There is another relief cabin above Aloha Creek.



15.



15.

② Location and direction of photograph.

