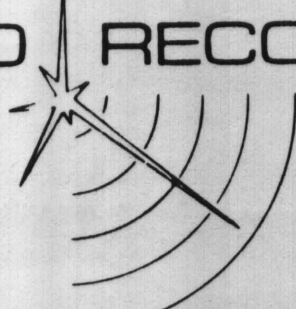


# GEO RECON INTERNATIONAL

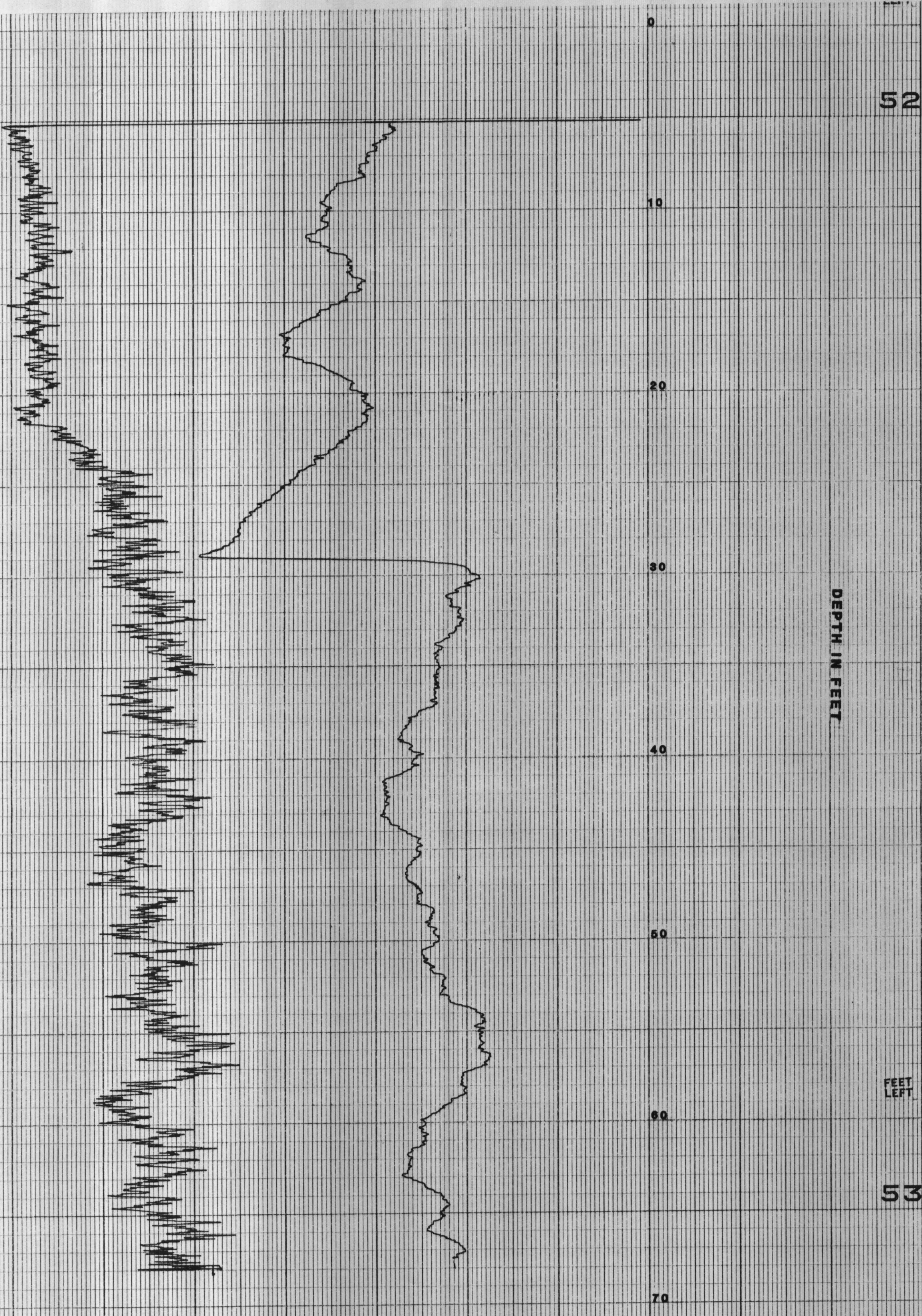


geophysics archeology geology

P.O. BOX 55189  
SEATTLE, WA. 98155  
(206) 362-9484

## LOG HEADING

<b>COMPANY</b> DENALI DRILLING	<b>KATEEL RIVER MERIDIAN LOCATION</b>	<b>HOLE NO.</b> DH9-82
<b>CLIENT REP.</b> PETE TESTER	TNSHP 6N RNG 18W SEC 15	<b>OPERATOR</b> CLYDE RINGSTAD
<b>DRILLED DEPTH</b> 70 FT	<b>COUNTY</b> --- <b>STATE</b> AK	<b>DATE</b> 8/27/82
<b>ELEVATION (G.L.)</b> 2 FT	<b>CASING</b>	<b>DRILLER</b> JOE REVELLO
<b>HOLE DIAMETER</b> 4½ IN	<b>DIAMETER</b> 4½ IN	<b>DRILLING MEDIUM</b> QUICK GEL
	<b>DEPTH</b> 20 FT	
<b>ELECTRIC LOG</b>	<b>GAMMA</b>	<b>CALIPER</b>
<b>DEPTH</b> NA FT	<b>COUNT RANGE</b> <sup>250</sup> 10,000 CPS	<b>VERTICAL SCALE</b> NA Ft/In
<b>RESISTIVITY</b> NA OHMS	<b>TIME CONSTANT</b> 1	<b>HORIZONTAL SCALE</b> NA In/In
<b>S.P.</b> NA MV	<b>LOGGING SPEED</b> 15 Ft/Min	
<b>VERTICAL SCALE</b> NA Ft/In	<b>VERTICAL SCALE</b> 5 Ft/In	



NAT. GAMMA

GAMMA-GAMMA