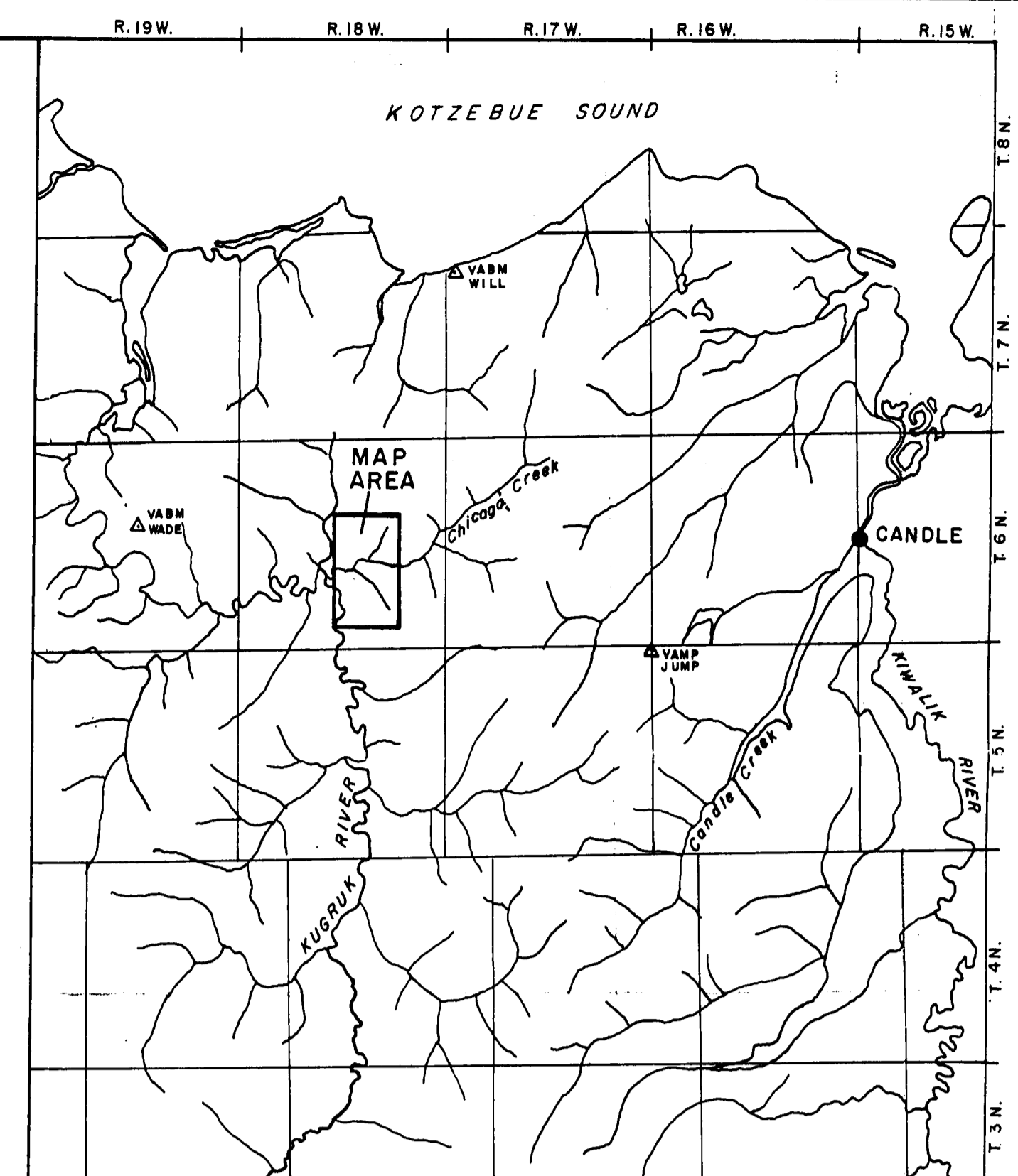
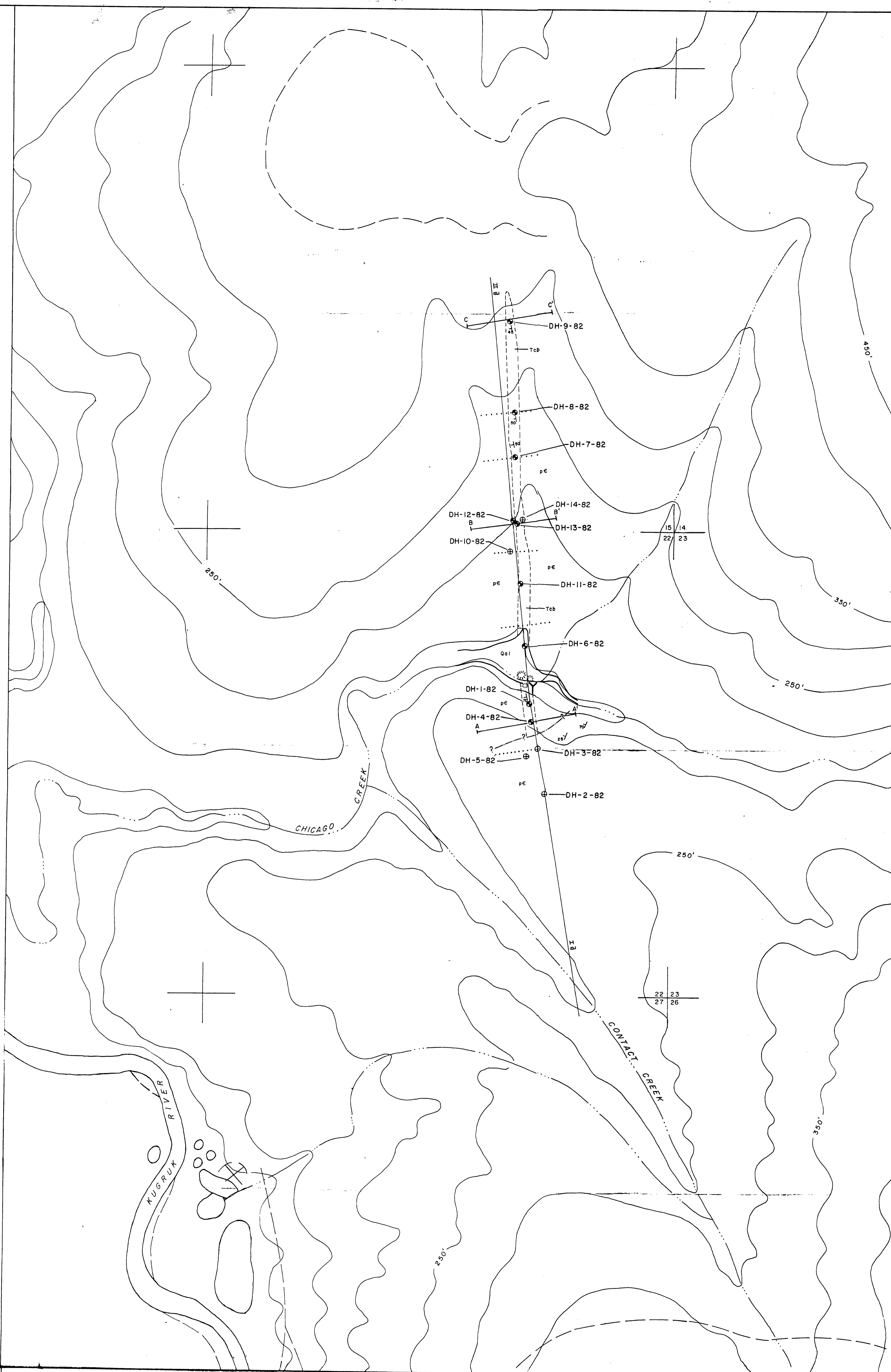
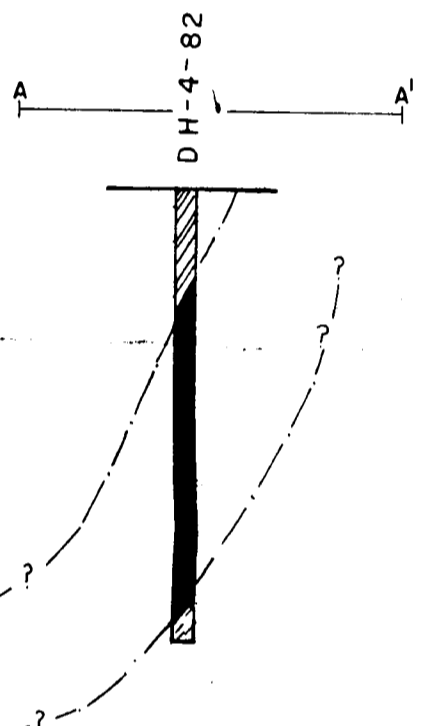
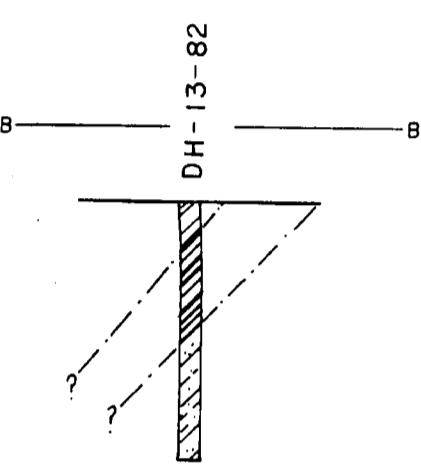
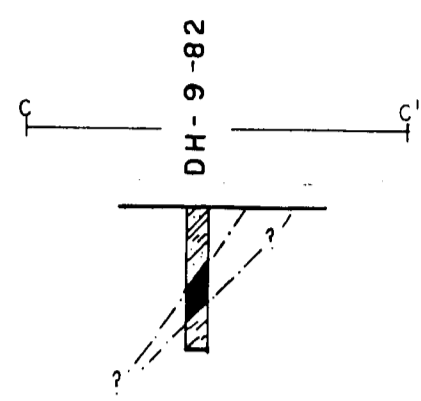
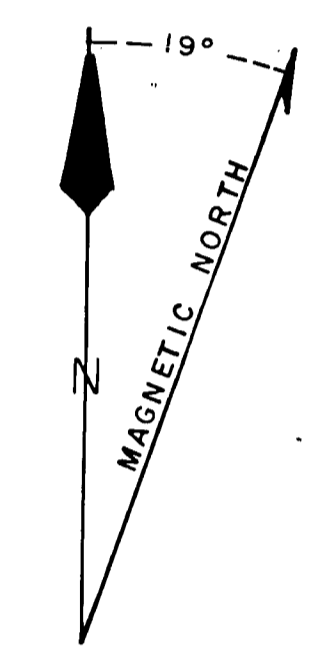


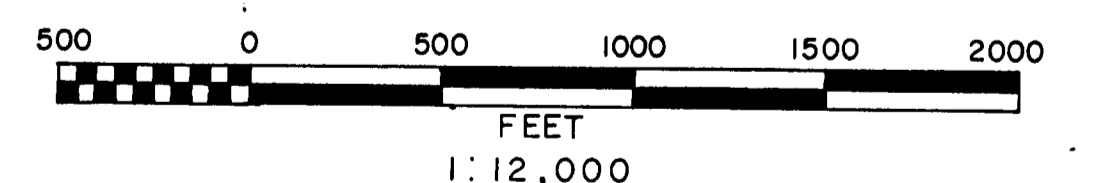
CROSS SECTIONS
LOOKING NORTH
HORIZONTAL SCALE - 1" = 500'
VERTICAL SCALE - 1" = 100'



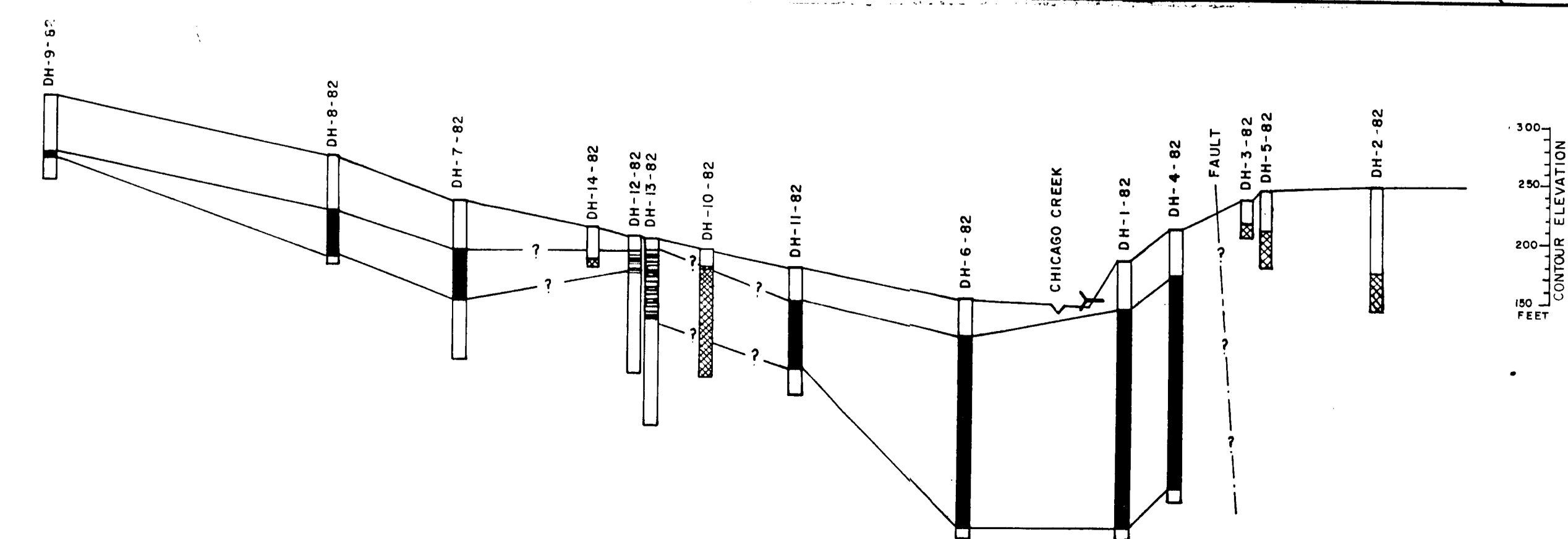
INDEX MAP
SCALE - 1:250,000
BASED FROM KOTZEBUE, SELAWIK, BENDELEBEN, CANDLE QUADRANGLES



- KEY**
- Qa1 - ALLUVIUM
 - Tob - COAL BEARING SEDIMENTS
 - pC - PRE-CAMBRIAN META-SEDIMENTS
(Quartzites, gray-mica schist, graphitic schist, chloritic schist)
 - ⊕ - DRILL HOLE WITH COAL INTERCEPT
 - ⊙ - DRILL HOLE WITH NO COAL INTERCEPT
 - - EM LINE, 50' STATIONS
 - I- - BASE LINE I N9°W
 - II- - BASE LINE II N5°40'W
 - ∠ - ATTITUDE OF BEDS
 - ?- - FAULT, DASHED WHERE INFERRED
 - ☼ - COAL SLACK PILES FROM OLD MINE WORKINGS
 - - PROJECTED CONTACT BETWEEN LITHOLOGIC UNITS
 - Y - ADIT - CHICAGO CREEK COAL MINE
 - || - OVERBURDEN
 - ⊥ - COAL INTERCEPT
 - ▬ - BEDROCK
 - ▨ - COAL INTERBEDDED WITH SEDIMENTS
 - - SAND
 - ▩ - SILT
 - ▧ - CLAYS



LONGITUDINAL SECTION
LOOKING EAST
HORIZONTAL SCALE - 1" = 500'
VERTICAL SCALE - 1" = 100'



STATE OF ALASKA

CHICAGO CREEK PROJECT
DRILL HOLE LOCATIONS

SCALE	DATE	BY	N.T.S. NO.	DWG. NO.
1" = 500 FEET	10/82	SJD	BENDELEBEN QUAD.	I

DENALI DRILLING INC. / STEVENS EXPLORATION MANAGEMENT CORP.