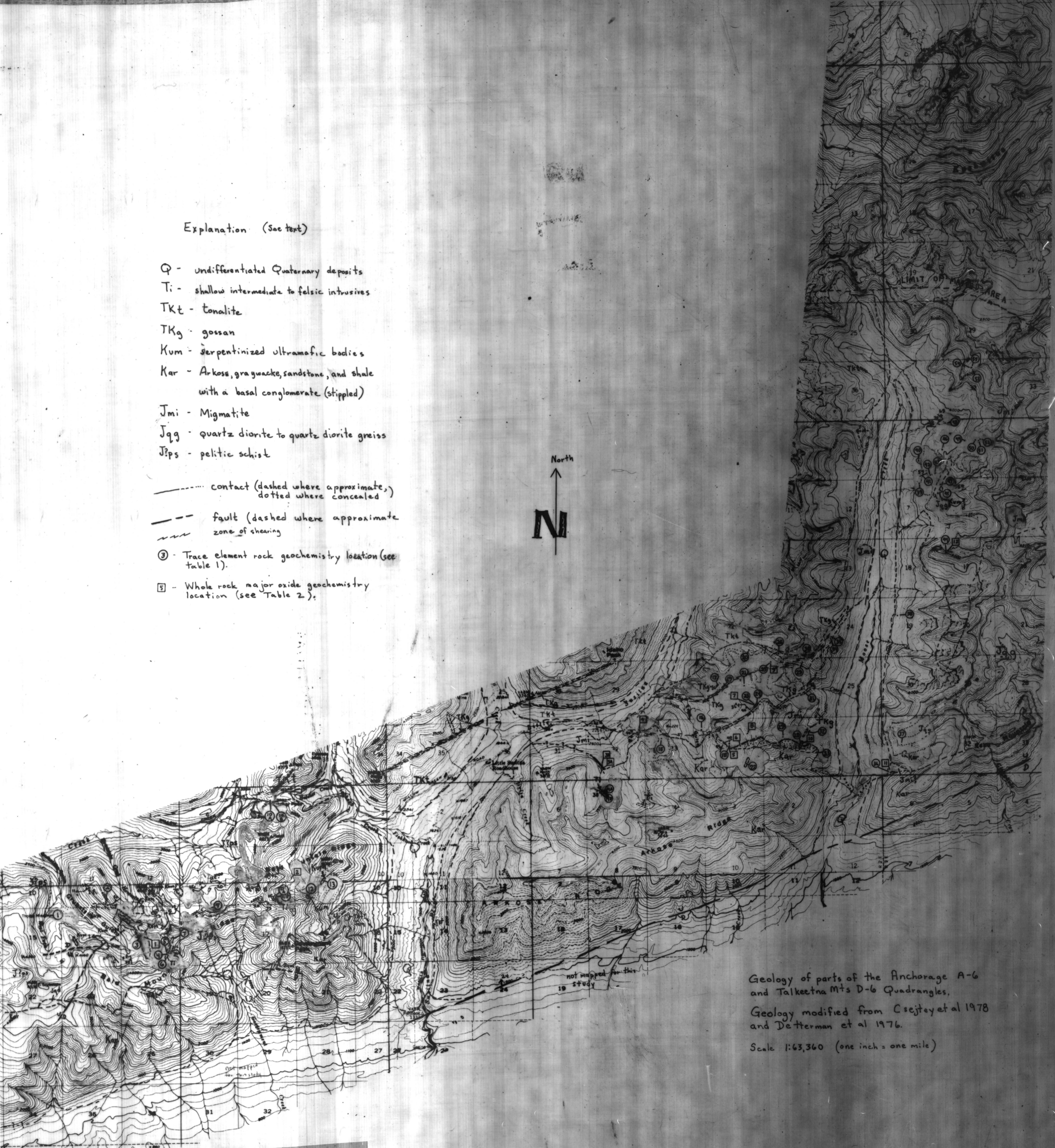


Explanation (See text)

- Q - undifferentiated Quaternary deposits
 - Ti - shallow intermediate to felsic intrusives
 - TKt - tonalite
 - TKg - gossan
 - Kum - serpentized ultramafic bodies
 - Kar - Arkose, graywacke, sandstone, and shale with a basal conglomerate (stippled)
 - Jmi - Migmatite
 - Jqg - quartz diorite to quartz diorite gneiss
 - Jps - pelitic schist
- contact (dashed where approximate, dotted where concealed)
 - - - - - fault (dashed where approximate zone of shearing)
 - ③ - Trace element rock geochemistry location (see table 1).
 - ⑤ - Whole rock major oxide geochemistry location (see Table 2).



Geology of parts of the Anchorage A-6 and Talkeetna Mts D-6 Quadrangles.
Geology modified from Csejty et al 1978 and Detterman et al 1976.
Scale 1:63,360 (one inch = one mile)

THIS REPORT HAS NOT BEEN READ BY THE DIRECTOR, HAS NOT RECEIVED OFFICIAL DGGS PUBLICATION STATUS, AND SHOULD NOT BE QUOTED AS SUCH.