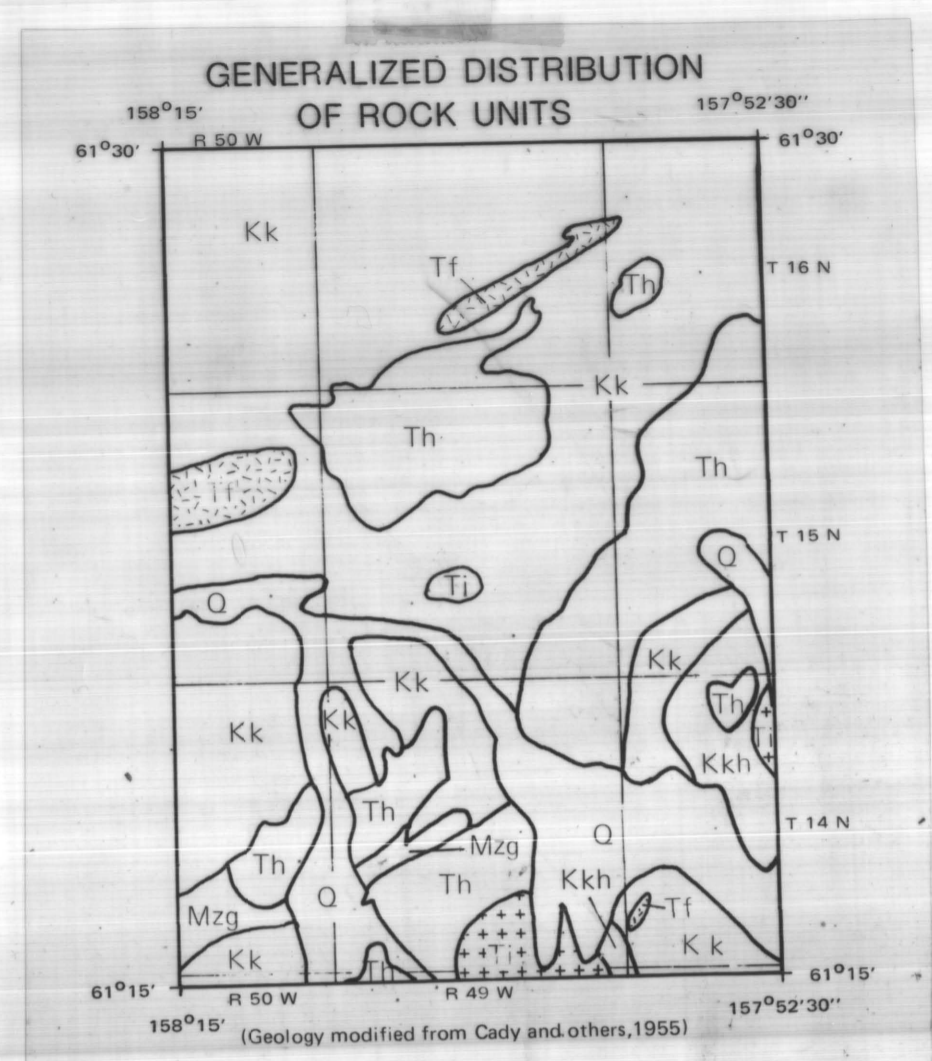
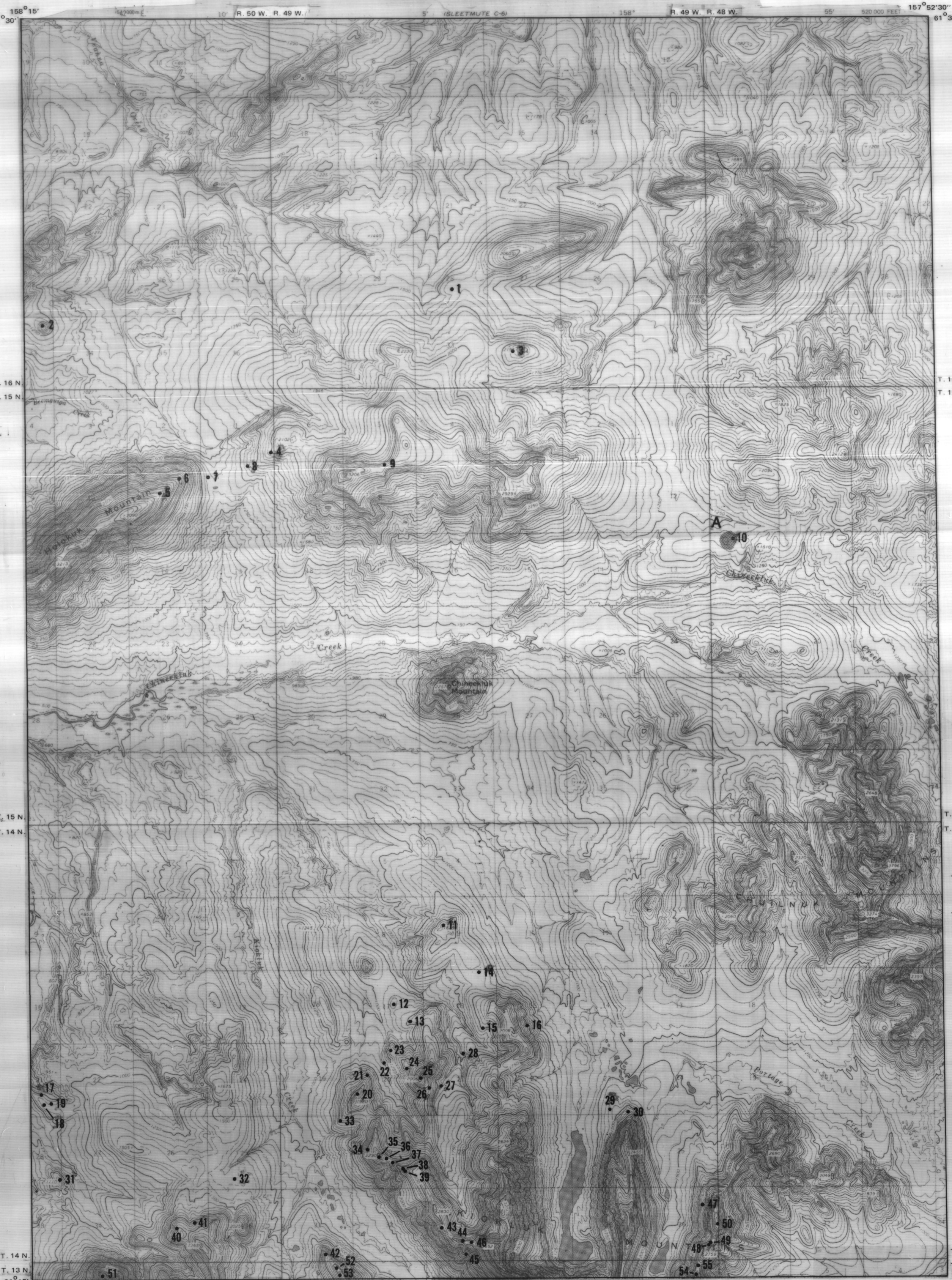
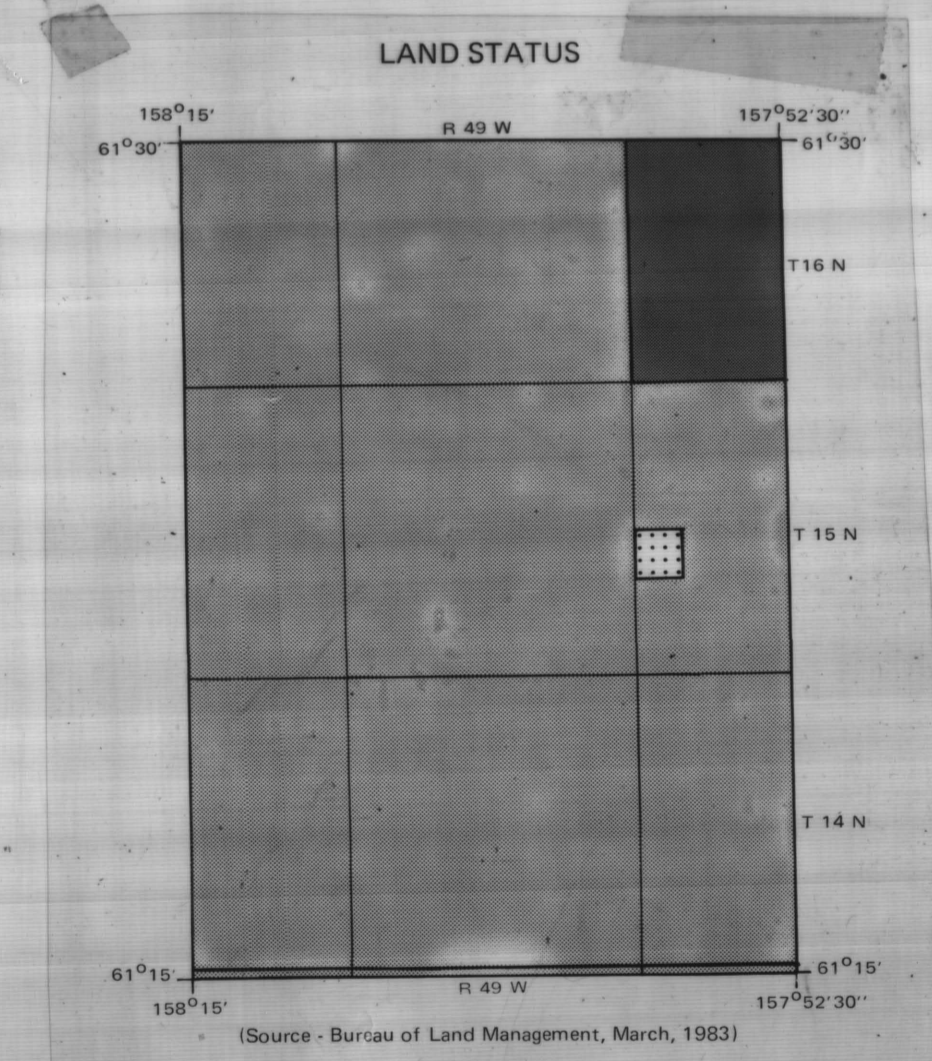


SLEETMUTE B-6 QUADRANGLE



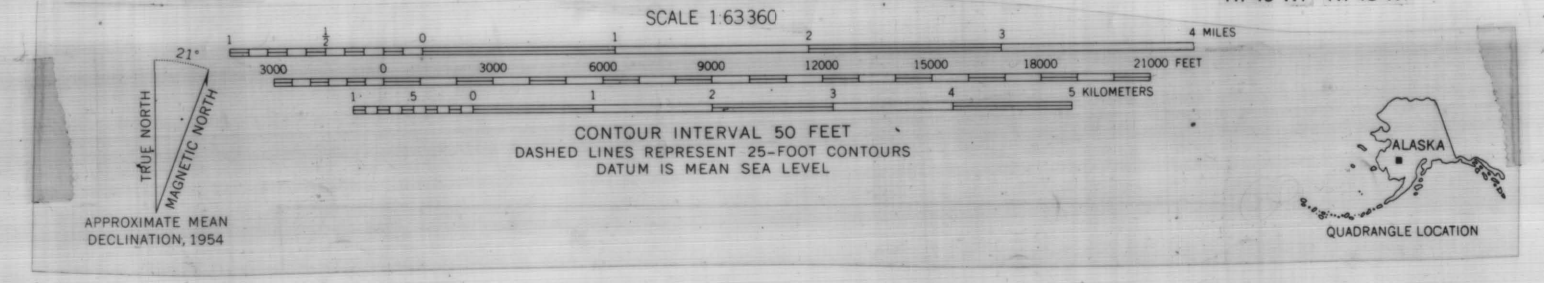
- EXPLANATION**
- Q - Quaternary deposits
  - Ti - Intrusive rocks
  - Th - Holokuk basalt
  - Tf - Felsic volcanic rocks
  - Kk - Kuskokwim Group
  - Kkh - Hornfelsed Kuskokwim Group
  - Mzg - Gemuk Group



- LAND STATUS**
- State selected
  - State tentatively approved
  - ▣ Native selected

- MAP SYMBOLS**
- 28 - map number; corresponds to table numbers
  - A - mine or prospect (table 4)
  - - extent of mine or prospect

Base from U.S. Geological Survey Sleetmute B-6, 1954, Quadrangle, Alaska. This report is a preliminary publication of DGGs. The authors are solely responsible for its content and will appreciate candid comments on the accuracy of the data as well as suggestions to improve the report.



COMPILATION OF GEOLOGIC DATA FROM THE SLEETMUTE B-6 QUADRANGLE, SOUTHWESTERN ALASKA

Compiled by  
John Murphy, John Decker, Rocky Reifenhohl and Warren L. Coonrad

1984