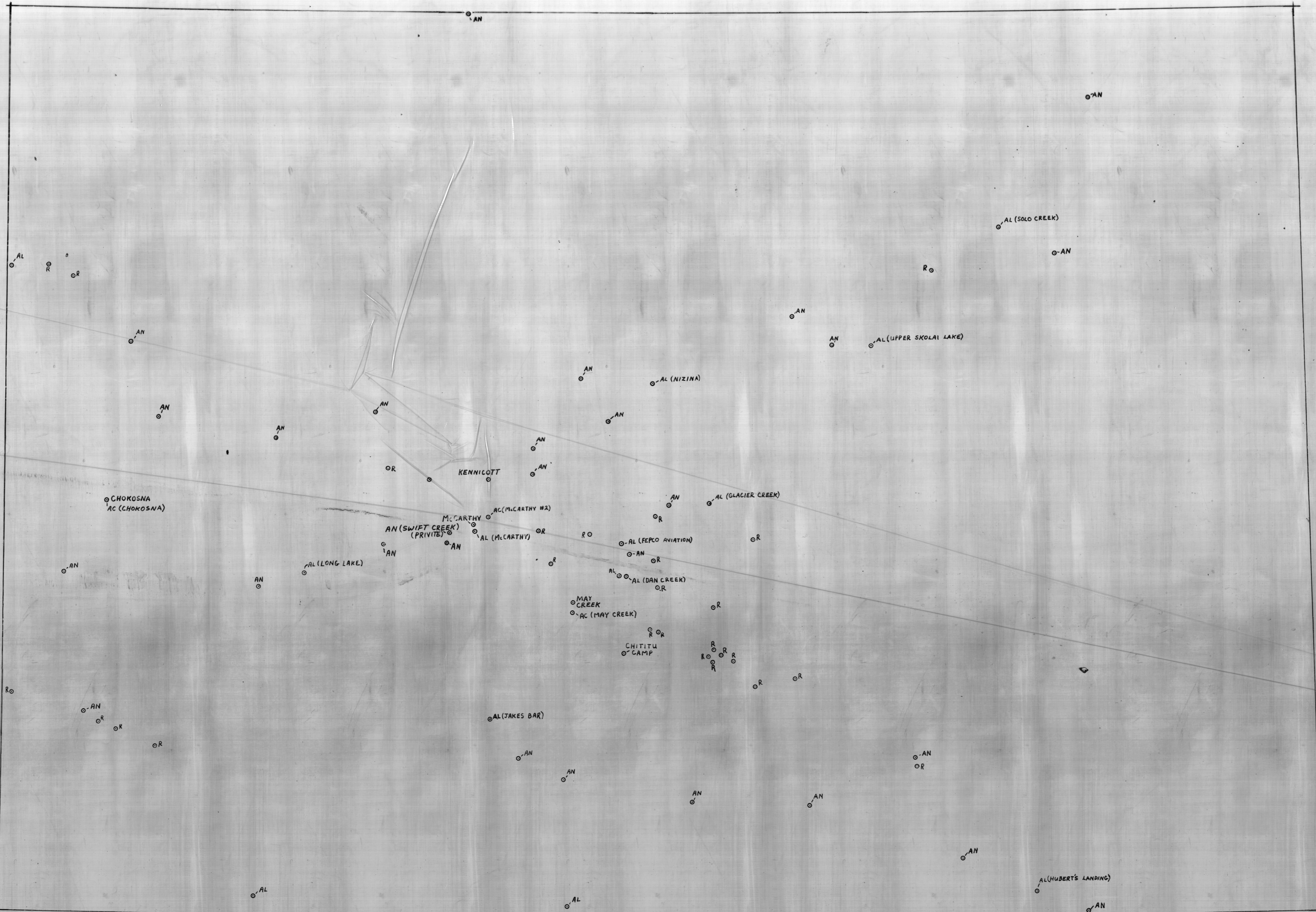


This map was developed primarily from compilation of existing maps and documents (natural area airports were located by National Park Service personnel and local pilots in the Glennallen area). See the User's Guide for the Copper River Area Resource Mapping Project for detailed descriptions of mapped features and documentation of compilation methods and sources.



- AIRPORTS**
- 1st letter
A Airport
- 2nd letter
C Community: primary access point to small rural community
H Heliport: specifically designated and developed helicopter landing area
L Local: serves as recreational or emergency airstrip and is not primary access point to a community
N Natural area: minimally improved natural area frequently used by bush aircraft
S Seaplane: seaplane landing area with capability to accommodate all general aviation seaplanes
T Transport: primary access point to medium-sized rural community
- Airports inventoried by the Alaska Department of Transportation and Public Facilities are designated further by their name.

- NAVIGATIONAL FACILITIES**
- 1st letter
N Navigational facility
- 2nd letter
O Other facilities, for example, marine radiobeacon, commercial broadcast stations, FSS outlets (RCO, LFCO, SFO, SSFO, etc.)
R Nondirectional Radio Beacon
V VOR, VORTAC, VOR-DMC

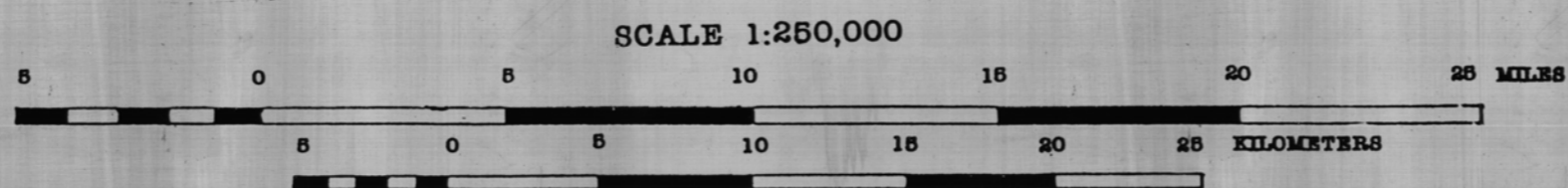
- HYDROELECTRIC SITES**
- 1st letter
H Hydroelectric site
- 2nd letter
E Existing
P Proposed

- ELECTRIC GENERATION/DISTRIBUTION FACILITIES**
- 1st letter
E Electric generation/distribution facility
- 2nd letter
B Bulk power substation
D Distribution substation
G Generation station

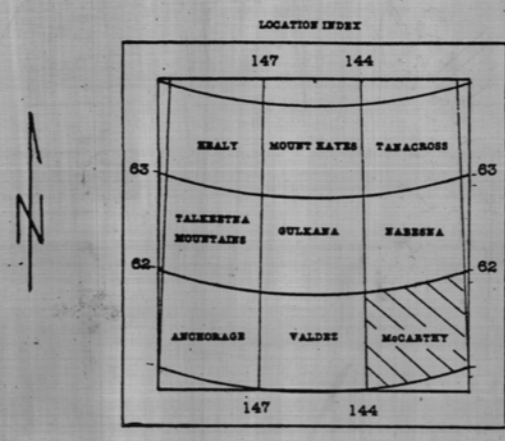
- OTHER POINT DATA**
- C Cemetery
M Mud volcano
P Pump Station
R Rock glacier
T Thermal Spring

This map is intended for regional planning purposes; site-specific planning will require ground verification of mapped features.

PREPARED FOR THE
STATE OF ALASKA
DEPARTMENT OF NATURAL RESOURCES
DIVISION OF GEOLOGICAL & GEOPHYSICAL SURVEYS
BY AGRA
ARCTIC GEO RESOURCE ASSOCIATES
COMPILED BY
ARCTIC GEO-TERRAIN CONSULTING
1984



McCarthy QUADRANGLE
INFRASTRUCTURE-POINT DATA



This document has not received official DGGS review and publication status, and should not be quoted as such.