

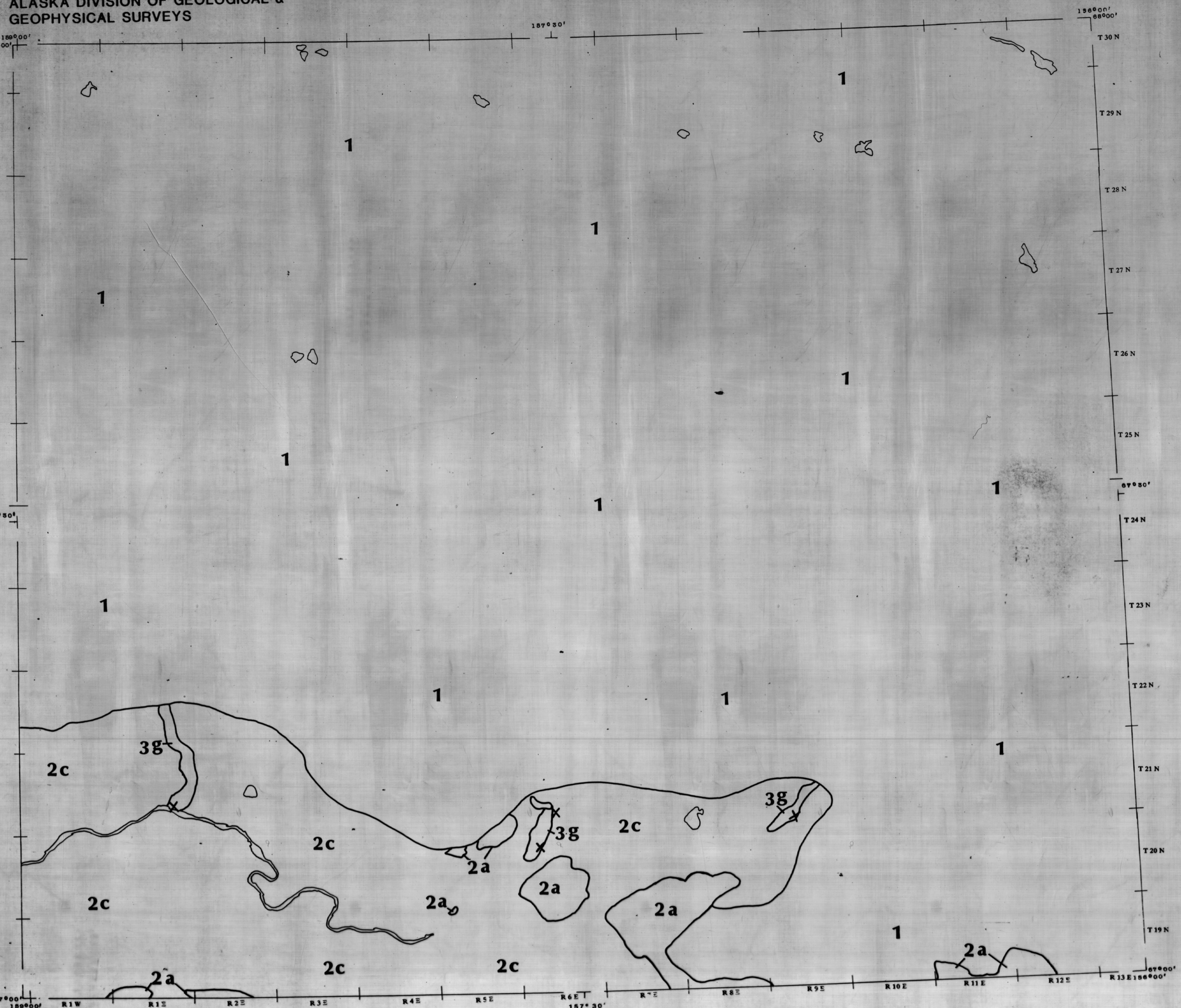
ALASKA DIVISION OF GEOLOGICAL & GEOPHYSICAL SURVEYS

AMBLER RIVER

EXPLANATION

SUMMARY: AMBLER RIVER QUADRANGLE

GLOSSARY

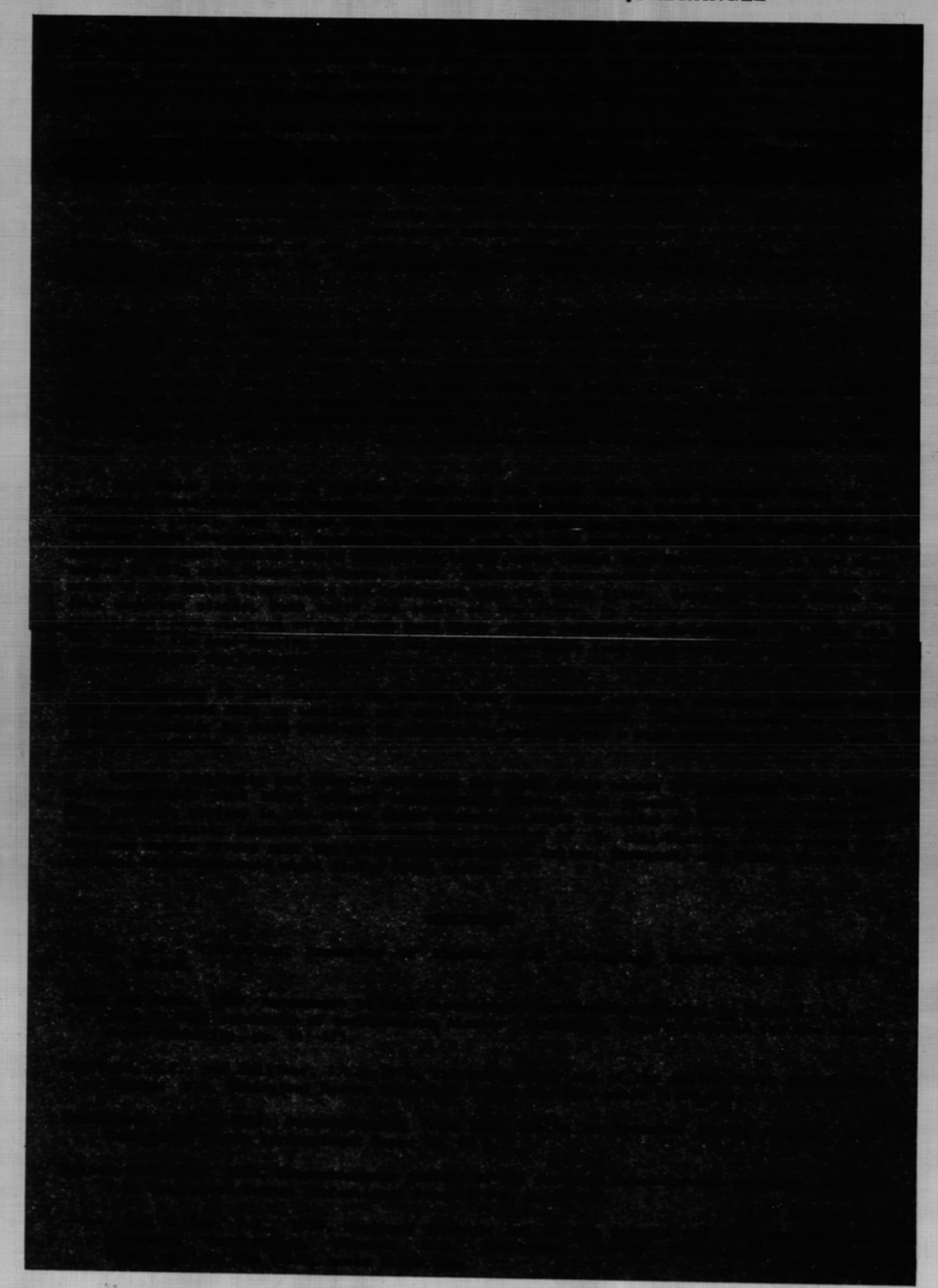
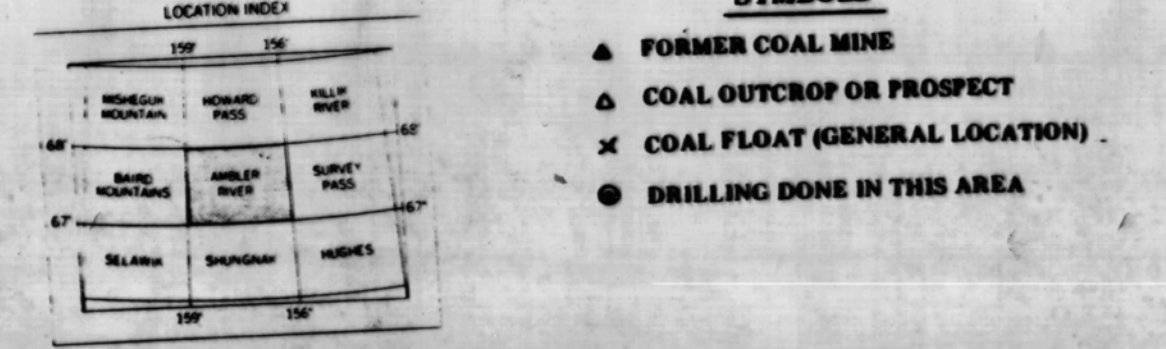


COAL RESOURCE RATING CRITERIA

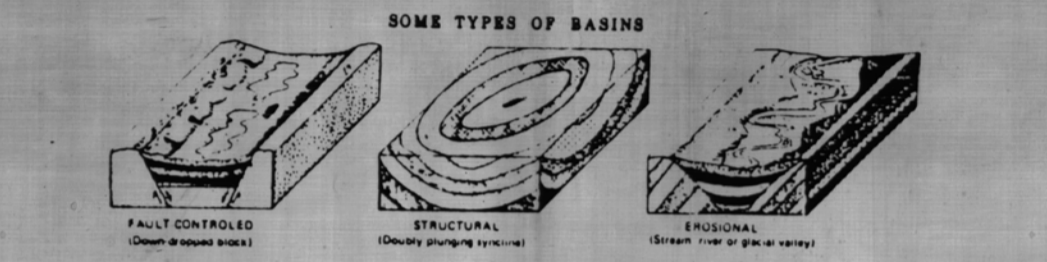
The following resource rating criteria are organized on a scale of 1 - low to 5 - high potential. A rating of 1 indicates virtually no possibility for substantial coal discoveries...

- 1 Very low to low possibility for substantial coal discoveries; sedimentary and other rock units not known to host coal...
2 Low to medium possibility for substantial coal discoveries; these ratings based mostly on published general, broad-brush geology...
3 Medium to high possibility for substantial coal discoveries...
4 Known coal, lesser occurrences, and/or less well studied than 3's...
5 Known coal, medium to large measured resources (see Glossary) of usable quality coal...

SYMBOLS



Rock structures formed from the large-scale folding of massive rock units, the upward folded portion of the rock is the anticline, with an inverted U-shaped cross section; the downward folded part is the syncline, with a U-shaped cross section.



Coal that contains a high percentage of incombustible impurities like clay, dirt, or rock fragments; if the material contains over 33% ash, it is considered to be carbonaceous rock rather than coal and is not included as coal in resource calculations.

Similar to coal float, but often the fragments of a fractured sub-surface coal bed fractured to the surface through freeze-thaw action, as the fractured and fragmented coal particles that accumulate from the weathering of a surface or near-surface coal occurrence; found close to the parent coal bed.

The angle a tabular rock unit forms with the horizontal.

The solid residue, other than ash, obtained by destructive distillation of coal; determined by definite prescribed ASTM methods.

The older 1/2 of the geologic period called the Carboniferous, during which many of the world's coal deposits formed; the Mississippian sub-period spans the time from 360 million to 320 million years ago; in this report, occurs only in the summary for the Point Hope quadrangle.

Classification and use are determined by a coal's rank, its heating capacity, and its weathering characteristics (whether it remains compact or readily crumbles and decomposes under surface conditions); lignite and subbituminous coals are often satisfactory for local use...

Table with columns for Coal Rank, Btu/lb, and Fixed Carbon % based on Moist, Mineral Matter Free Basis. It lists ranks from Lignite to Anthracite with their corresponding energy values.

1 Btu (British thermal unit) equals 252 calories of heat. There are approximately 1,000 Btu in 1 gallon of fuel oil or diesel. 1 Btu (without heat) equals approximately 1,000 Wh.

USGS Ambler River Quadrangle Topographic Map, Scale 1:500,000. This report has not been read by the Director, and does not represent official USGS publication status...

COAL RESOURCE POTENTIAL OF THE AMBLER RIVER QUADRANGLE, ALASKA 1985