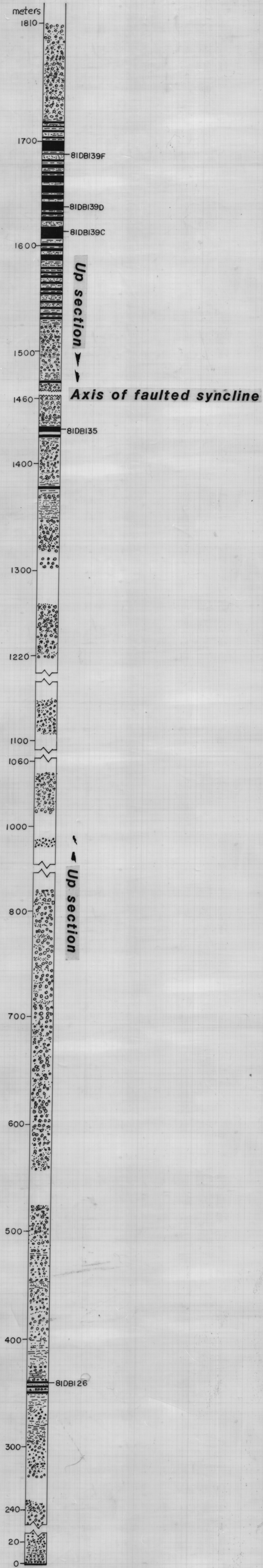


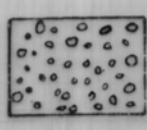
Figure 1

Separated by PR 102

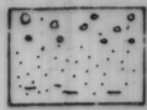
**WINDY FORK MEASURED SECTION**



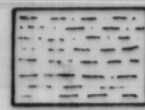
**EXPLANATION**



**CONGLOMERATE**—Large-scale, cross-bedded to massive, poorly sorted, buff-weathering, gray-brown, subangular to rounded, granule to cobble, poorly to moderately indurated. Clasts of quartz (10-55 percent), lithic fragments (25-60 percent) and volcanic fragments (12-30 percent).



**SANDSTONE**—Thin- to thick-bedded, moderately indurated, subangular to subrounded, fine- to very coarse grained, interbedded with conglomerate or siltstone and mudstone. Clasts of quartz (29-55 percent), lithic fragments (43-58 percent), feldspar (2-8 percent), and traces of carbonaceous material.



**SILTSTONE AND SHALE**—Thinly laminated to thin-bedded. Siltstone, moderately indurated, brown to gray, weathers in pods locally; shale, fissile, gray-weathering, black with varying amounts of carbonaceous material.



**CARBONACEOUS SHALE TO COAL**—Highly friable, carbonaceous shale, commonly contains coalified leaf and wood fragments, with varying amounts of very fine grained sand and silt, grades to very thin bedded coal, highly weathered in outcrop, with common small silt and mud lenses.

Sections measured by D.B. Dickey, assisted by K.F. Bull, 1981.