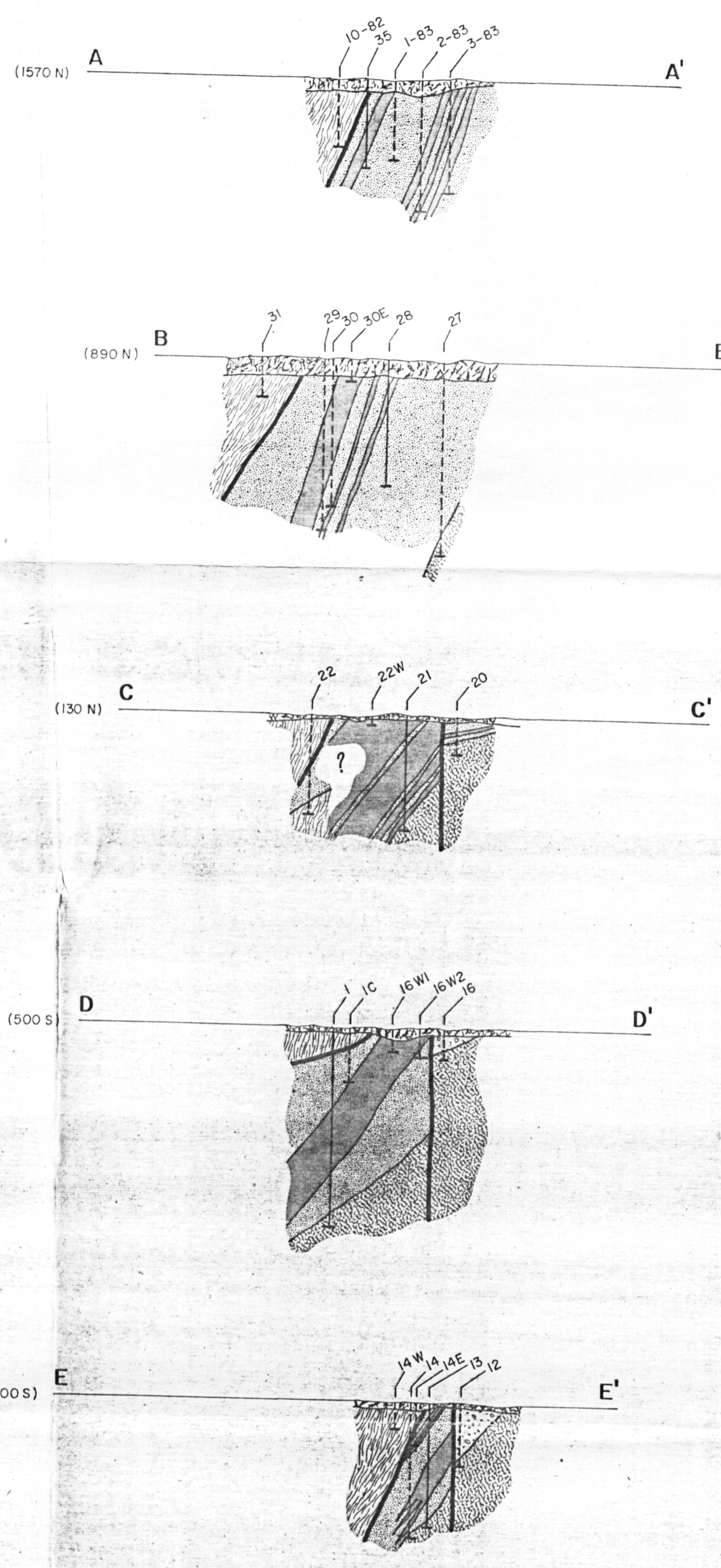


**CHICAGO CREEK AREA  
GEOLOGIC MAP AND CROSS SECTIONS**



(NO EXAGGERATION IN VERTICAL SCALE)

**LEGEND**

- Vegetation, loess and ice - shown only on cross sections
- Gravel, sandstone and siltstone of possible Pleistocene age
- Gray and brown siltstone, mudstone and sandstone of probable Tertiary age
- Lignitic coal of probable Tertiary age
- Green and gray, locally quartz-rich schist of probable Paleozoic age
- Gray to black, locally calcareous schist of probable Paleozoic age - shown only on cross sections

Geology from drill hole data, all bedrock exposures are covered by 5 to 20 feet of vegetation, loess, and ice

- Attitude of bedding
- Fault with attitude, dashed where inferred, D and U on downthrown and upthrown sides where known
- Thrust fault with attitude, barbs on upper plate
- Caved adit
- 1985 drill hole
- 1983 drill hole
- 1982 drill hole
- Segment used in reserve calculations

**Hrg**

PLATE 2

**HAWLEY RESOURCE GROUP INC.  
ANCHORAGE, ALASKA**

GEOLOGY BY T.K.HINDERMAN AND R.M.RETHERFORD  
OCTOBER 1985 DRAFTING BY A.F.FLEETWOOD