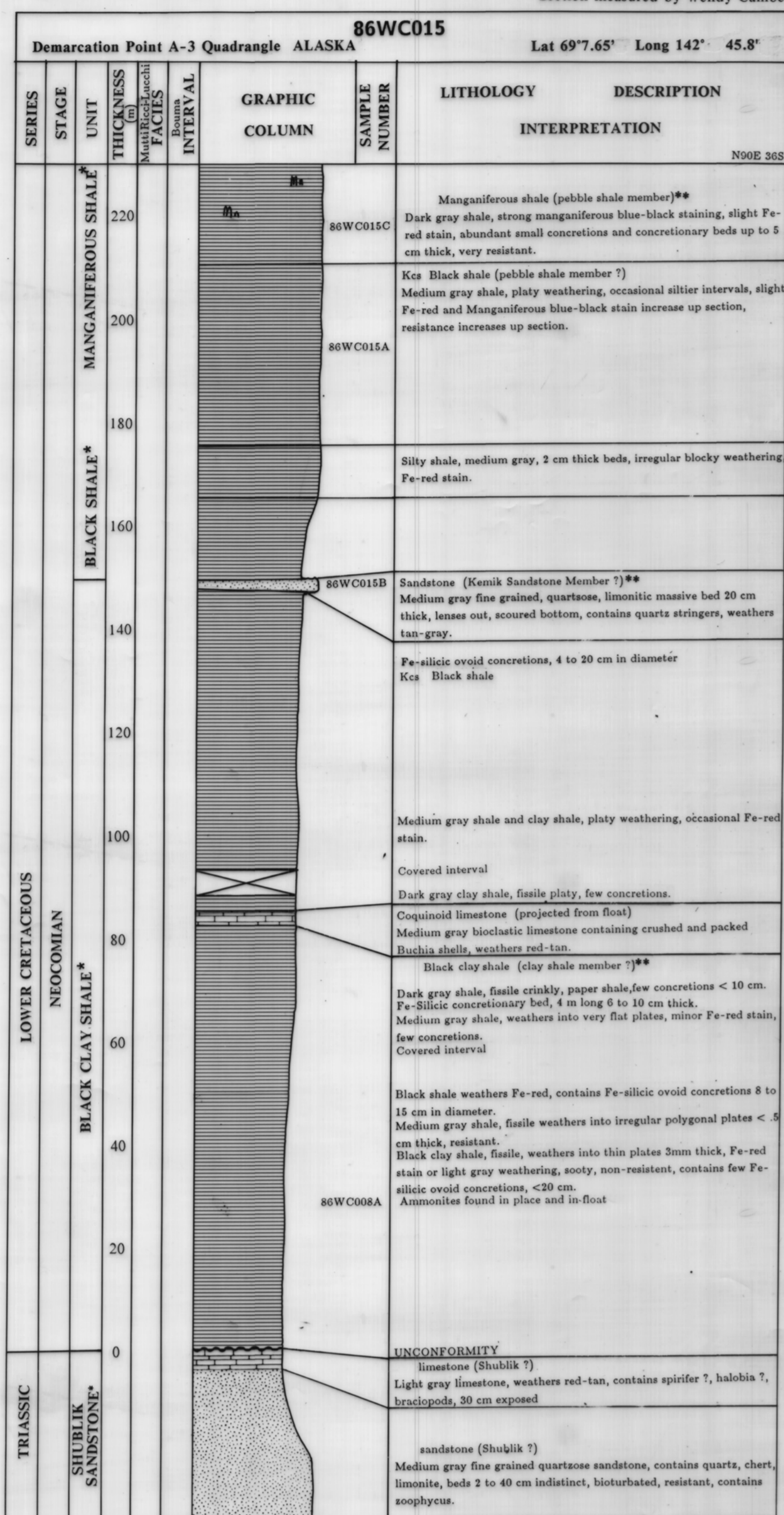


Measured Section of Lower Cretaceous Strata
 Bathub Ridge, Northeastern Alaska

Measured Section of Lower Cretaceous Strata
 Bathub Ridge, Northeastern Alaska

Measured Section of Lower Cretaceous Strata
 Bathub Ridge, Northeastern Alaska

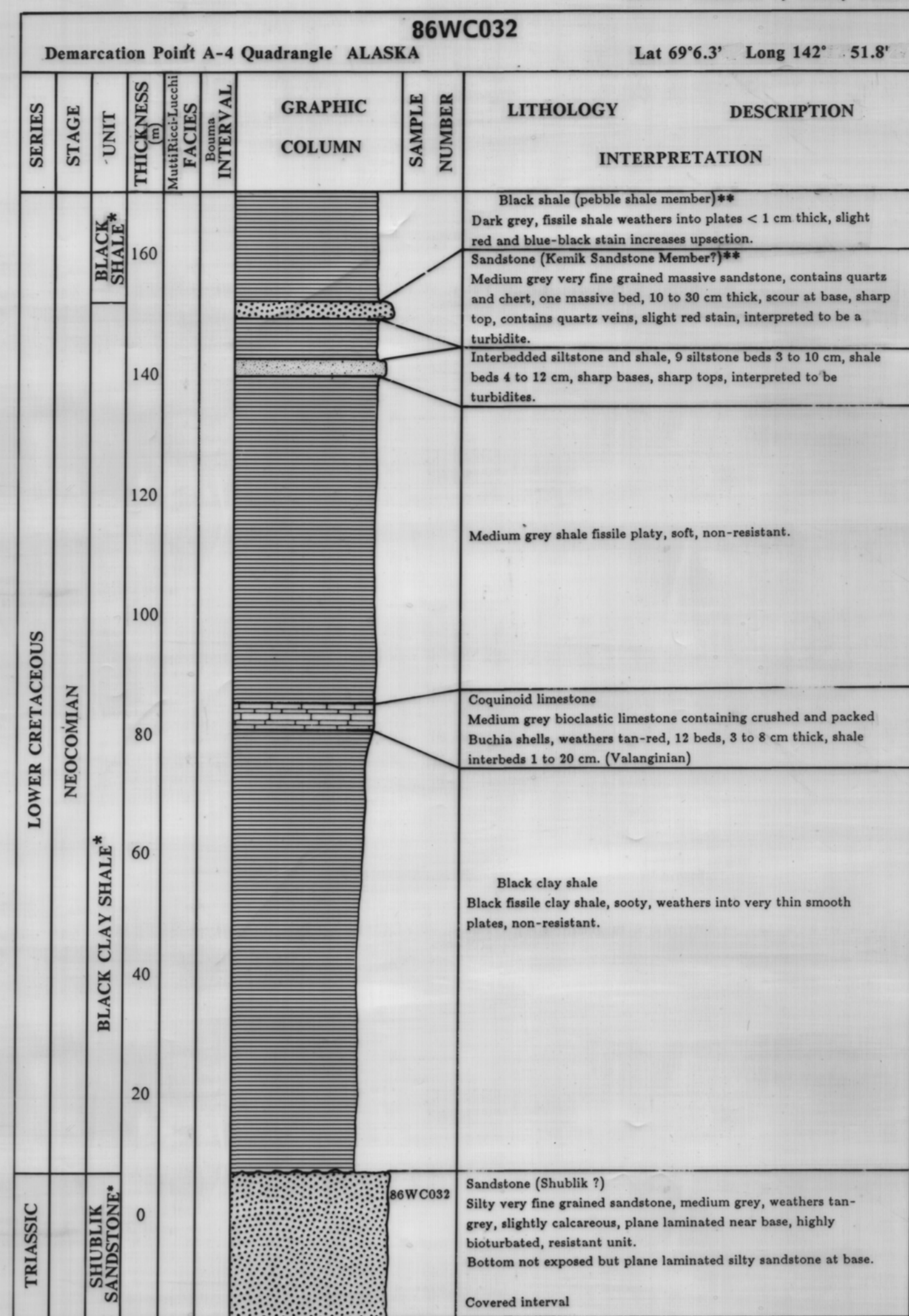


This report is a preliminary publication of DGGS. The author is solely responsible for its content and will appreciate candid comments on the accuracy of the data as well as suggestions to improve the report.

EXPLANATION

- Sandstone
- Limestone and shale
- Shale (Mn indicates manganese)

* indicates informal terminology used in this report
 ** of Kongakut Formation (Detterman, 1975)

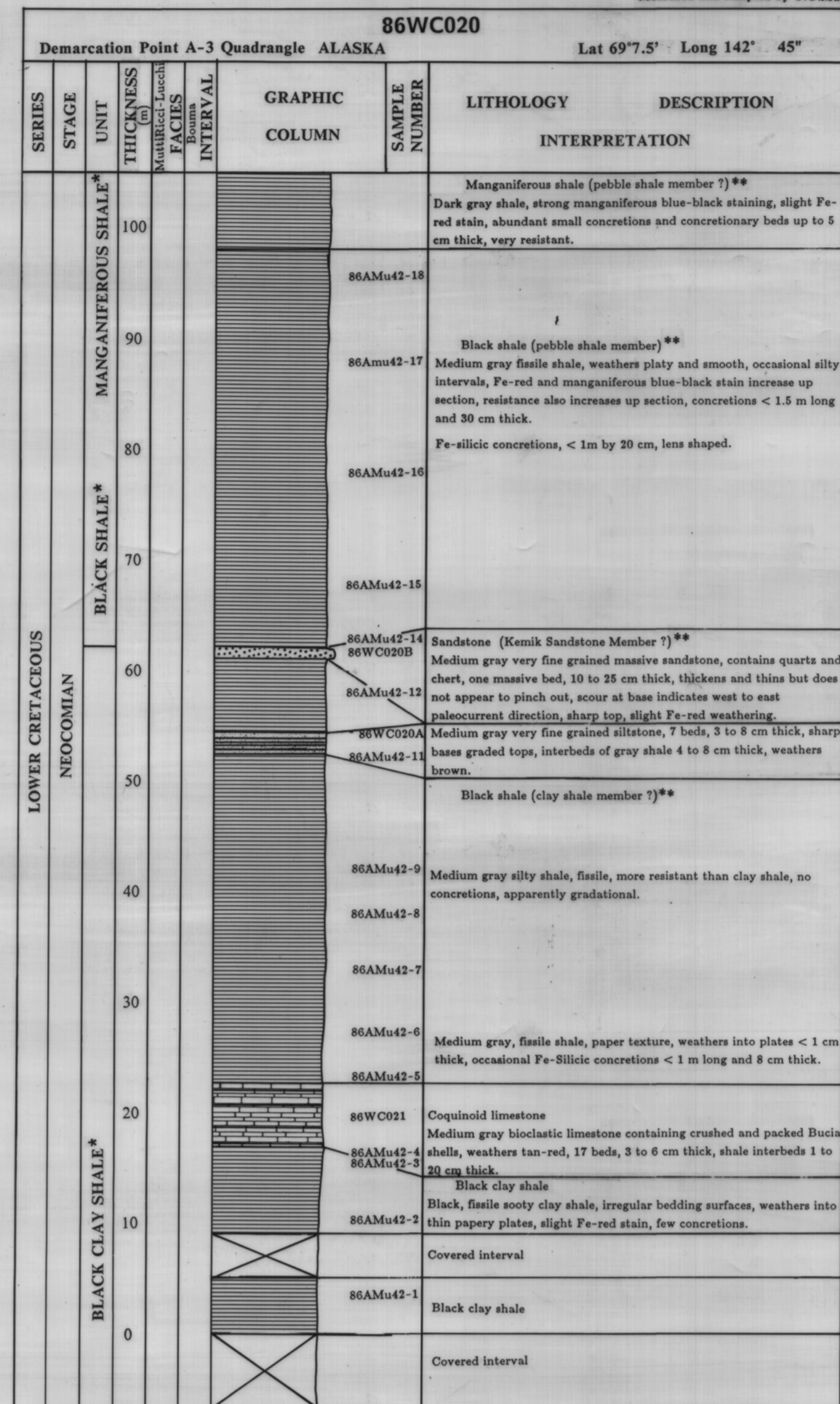


This report is a preliminary publication of DGGS. The author is solely responsible for its content and will appreciate candid comments on the accuracy of the data as well as suggestions to improve the report.

EXPLANATION

- Sandstone
- Siltstone and shale
- Limestone and shale
- Shale

* indicates informal terminology used in this report
 ** of Kongakut Formation (Detterman, 1975)



This report is a preliminary publication of DGGS. The author is solely responsible for its content and will appreciate candid comments on the accuracy of the data as well as suggestions to improve the report.

EXPLANATION

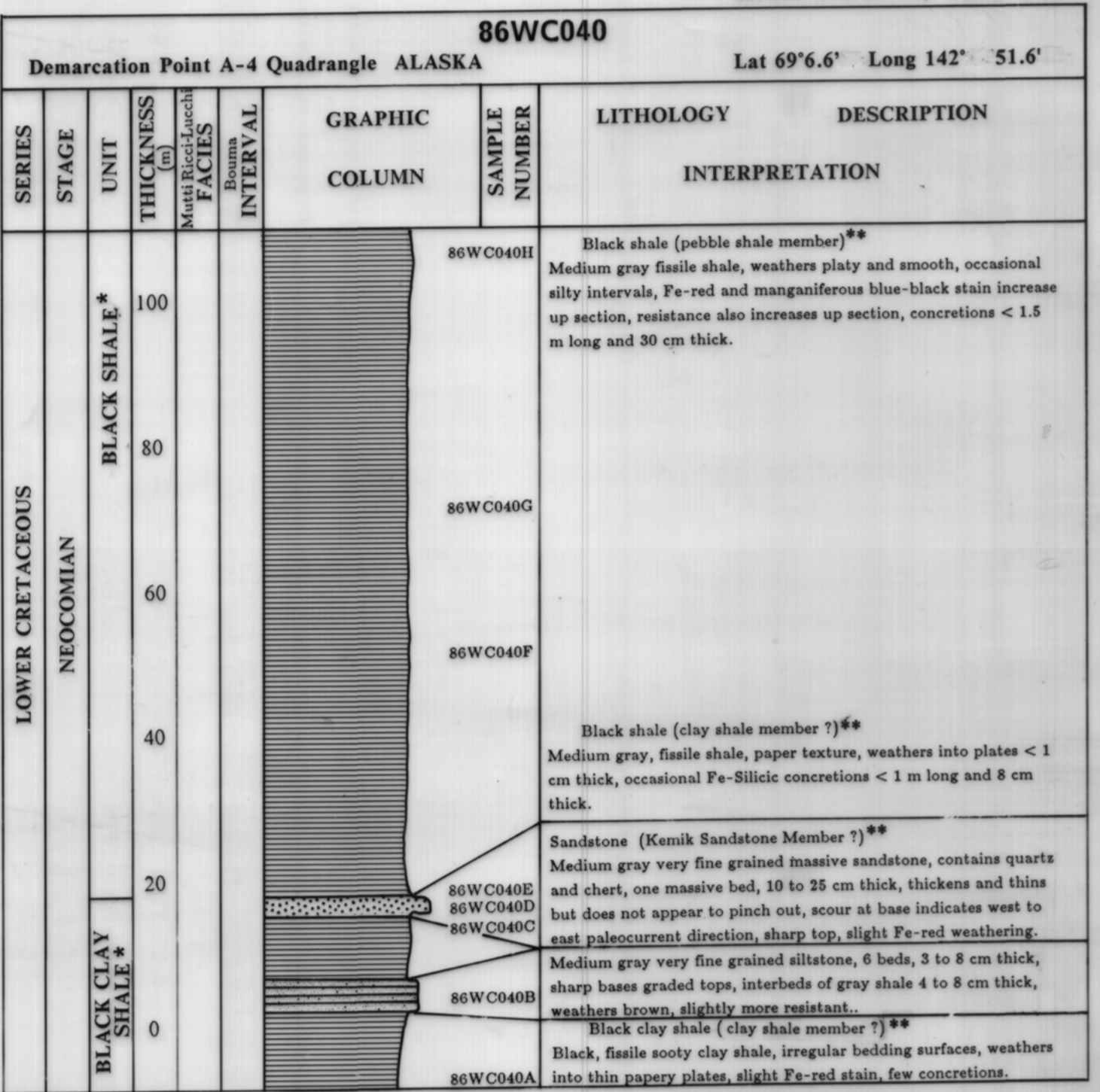
- Sandstone
- Siltstone and shale
- Limestone and shale
- Shale (Mn indicates manganese)

* indicates informal terminology used in this report
 ** of Kongakut Formation (Detterman, 1975)

Measured Section of Lower Cretaceous Strata
 Bathub Ridge, Northeastern Alaska

Measured Section of Permian Strata
 Bathub Ridge, Northeastern Alaska

Measured Section of Permian Strata
 Bathub Ridge, Northeastern Alaska

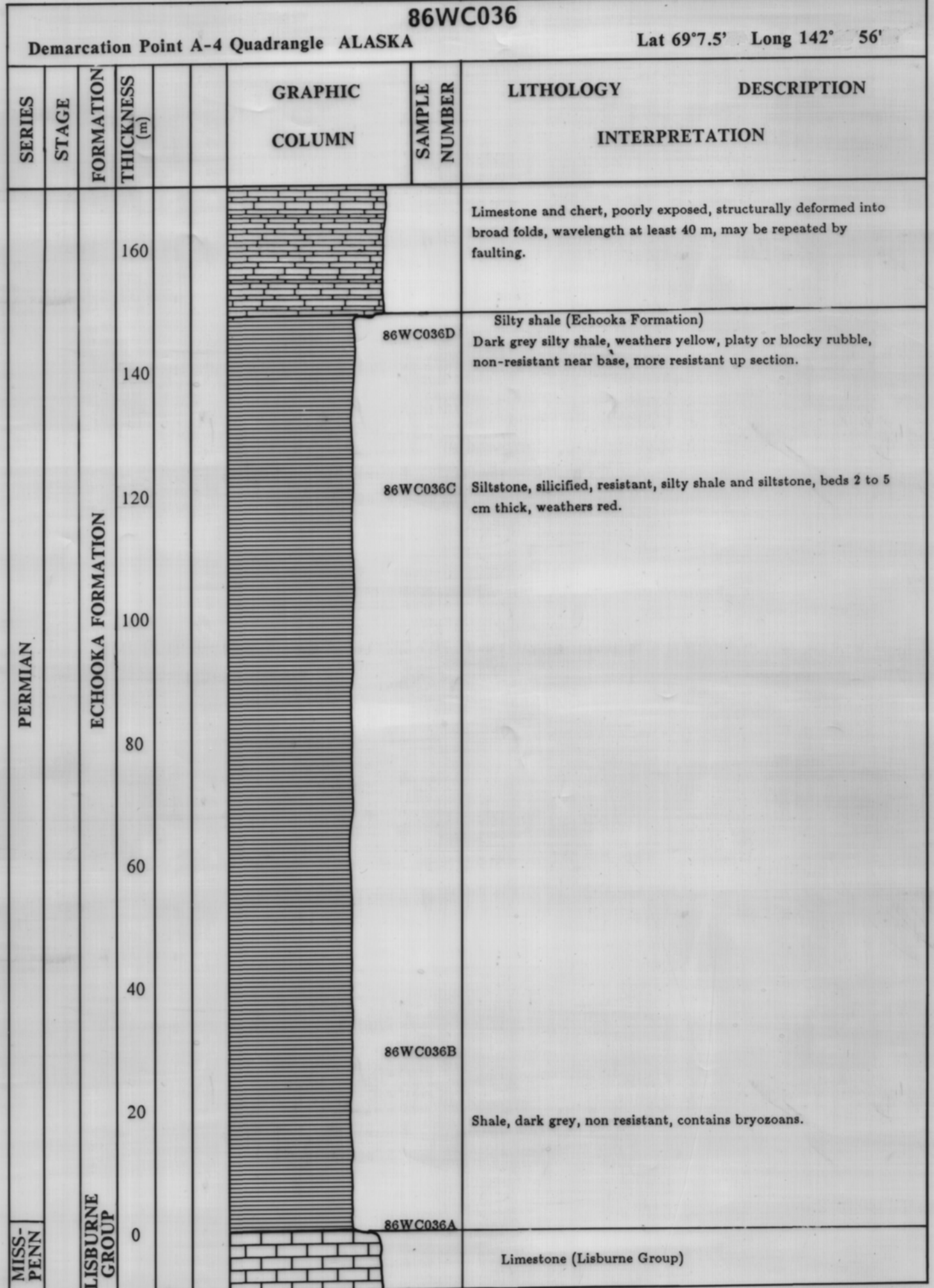


This report is a preliminary publication of DGGS. The author is solely responsible for its content and will appreciate candid comments on the accuracy of the data as well as suggestions to improve the report.

EXPLANATION

- Shale
- Sandstone
- Siltstone and shale

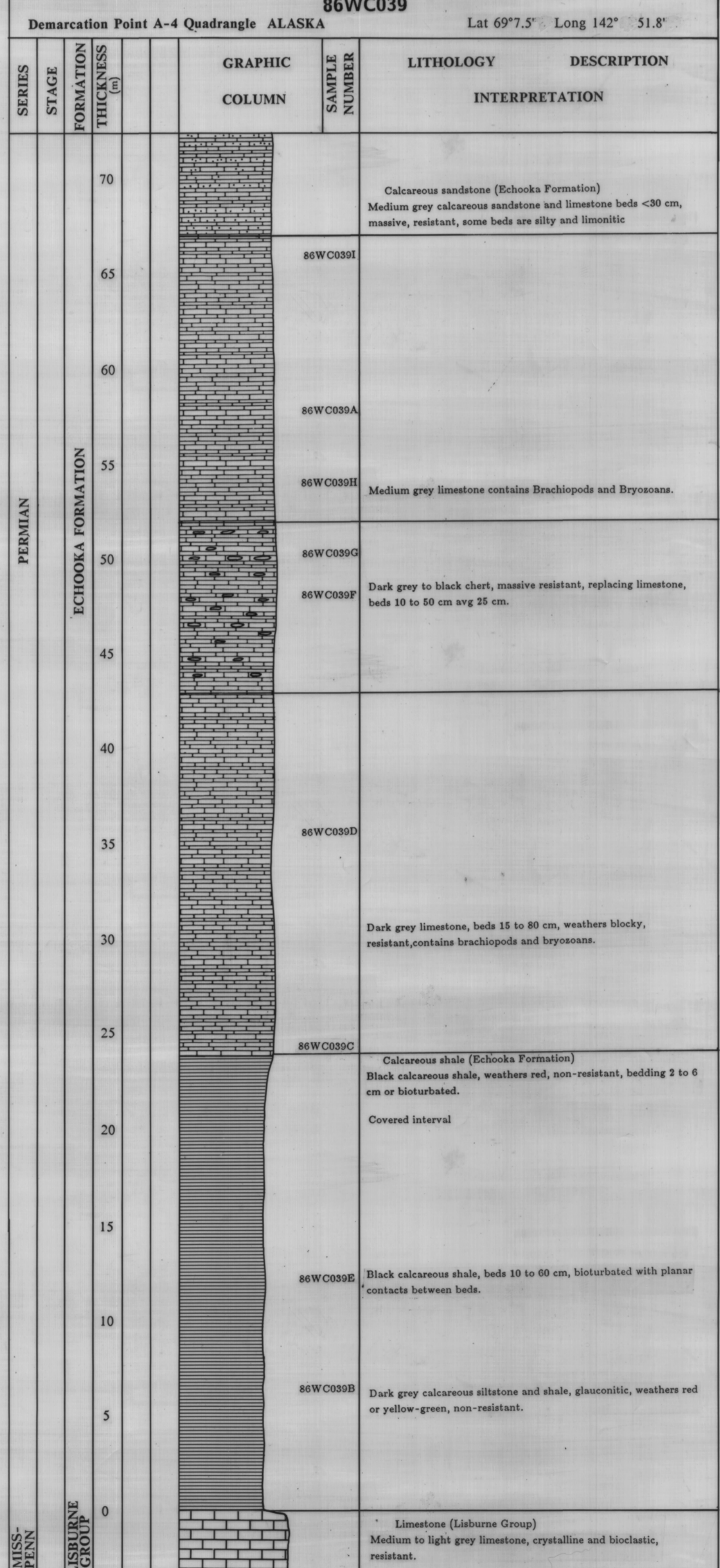
* indicates informal terminology used in this report
 ** of Kongakut Formation (Detterman, 1975)



This report is a preliminary publication of DGGS. The author is solely responsible for its content and will appreciate candid comments on the accuracy of the data as well as suggestions to improve the report.

EXPLANATION

- Limestone and shale
- Shale
- Chert replacement in limestone
- Massive Limestone



This report is a preliminary publication of DGGS. The author is solely responsible for its content and will appreciate candid comments on the accuracy of the data as well as suggestions to improve the report.

EXPLANATION

- Limestone and shale
- Shale
- Chert replacement in limestone
- Massive Limestone