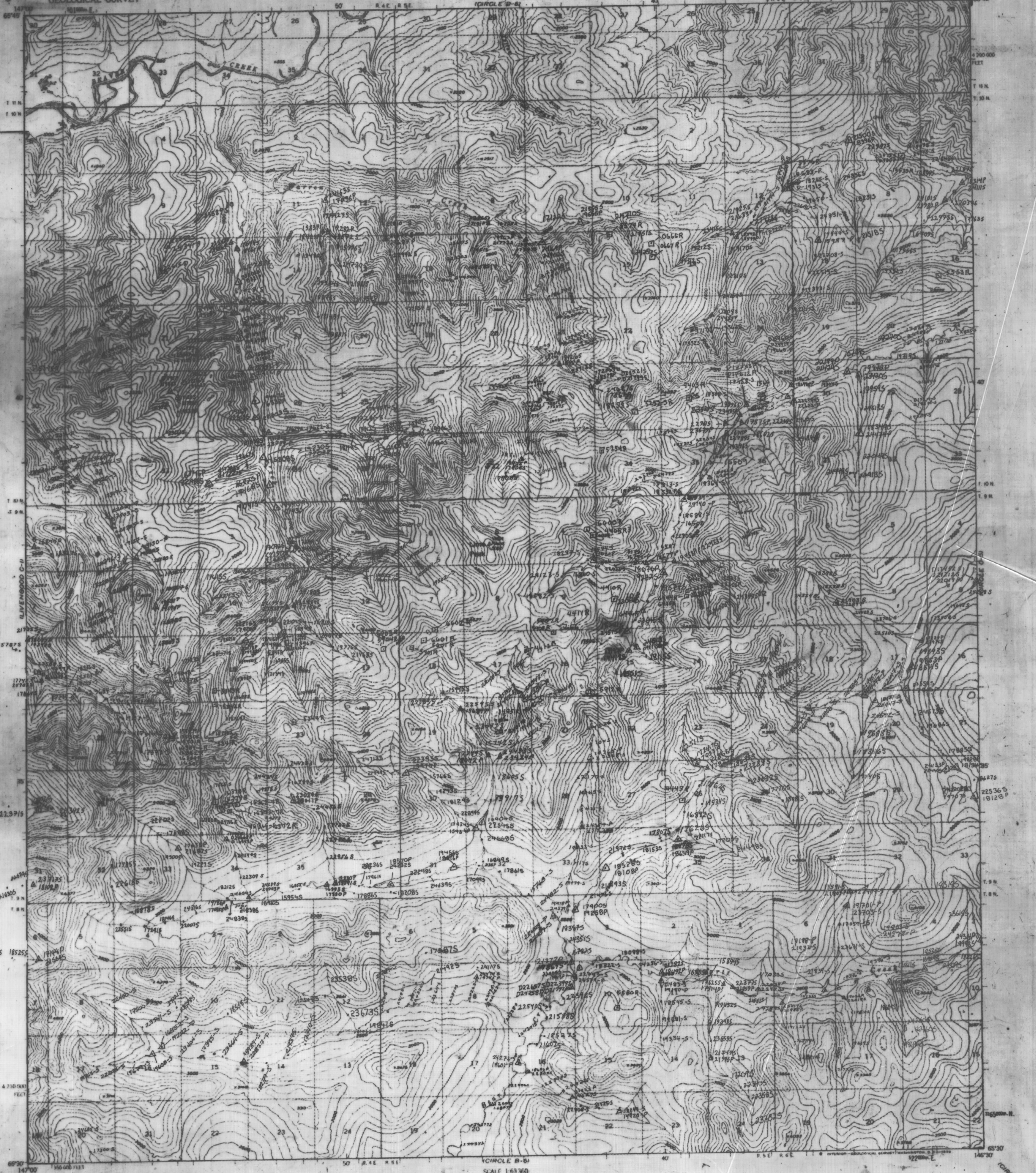
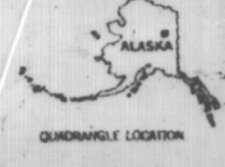
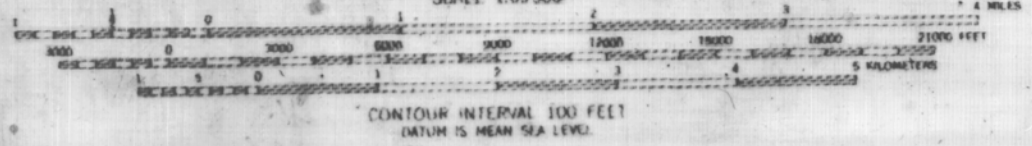
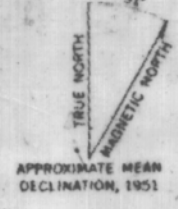


UNITED STATES
DEPARTMENT OF THE INTERIOR
GEOLOGICAL SURVEY



Mapped, edited, and published by the Geological Survey
Control by USGS
Topography by photogrammetric methods from aerial photographs
taken 1951. Map not field checked.
Universal Transverse Mercator projection 1927 North American datum
10,000-foot grid based on Alaska coordinate system, zone 3
1000-meter Universal Transverse Mercator grid ticks,
zone 6, shown in blue
Land lines represent unsurveyed and unmarked locations
determined by the Bureau of Land Management
Folio F 7, Fairbanks Meridian
Streams, as portrayed, indicate only the water areas,
usually of low relief as interpreted from aerial photographs



ROAD CLASSIFICATION
No roads or trails in this area

CIRCLE (C-6), ALASKA
N6530-W14630/15X30

FOR SALE BY U.S. GEOLOGICAL SURVEY
FAIRBANKS, ALASKA 99703, DENVER, COLORADO 80225, OR WASHINGTON, D.C. 20242
A FOLDER DESCRIBING TOPOGRAPHIC MAPS AND SYMBOLS IS AVAILABLE ON REQUEST

STEESE/WHITE MTS PROJECT ANALYTICAL DATA

CIRCLE C-6 Sample Locations

by Staff, 1986

EXPLANATION	
1989S	stream sediment sample
1989SP	heavy mineral concentrate
2978AR	rock geochem sample