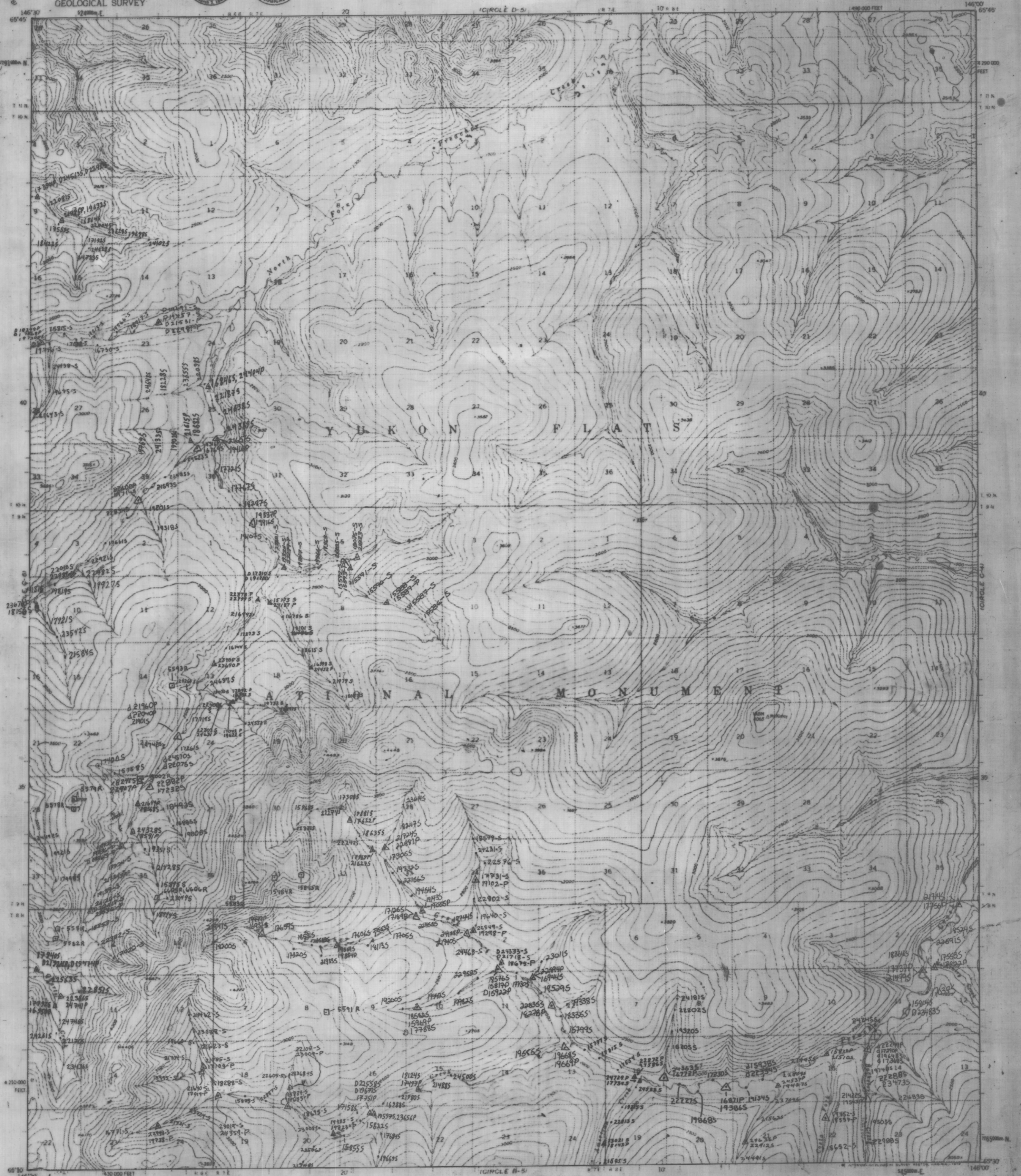


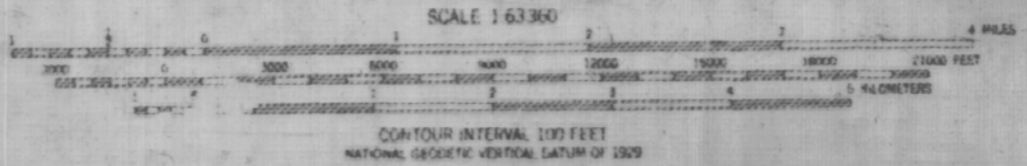
UNITED STATES
DEPARTMENT OF THE INTERIOR
GEOLOGICAL SURVEY



CIRCLE (C-5) QUADRANGLE
ALASKA
1:63 300 SERIES (TOPOGRAPHIC)



Mapped, edited, and published by the Geological Survey
Control by USGS
Topography by photogrammetry; methods from aerial photographs
taken 1951; field annotated 1952. Map not field checked
Universal Transverse Mercator projection, 1927 North American datum
10,000-foot grid based on Alaska coordinate system, zone 3
1000-meter Universal Transverse Mercator grid ticks,
zone 6, shown in blue
Land lines represent unsurveyed and unmarked locations
determined by the Bureau of Land Management
Folk, F. J. Fairbanks Meridian
There may be private inholdings within the boundaries of
the Yukon Flats National Monument shown on this map



STEESIE/WHITE MTS PROJECT ANALYTICAL DATA
CIRCLE C-5 Sample Locations

by Staff, 1986

ROAD CLASSIFICATION
Trails



CIRCLE (C-5), ALASKA
N6530-W14600/15300
1952
MORR REVISIONS 1973

EXPLANATION

15379S	stream sediment sample
Δ38967P	heavy mineral concentrate
□8702R	rock geochem sample