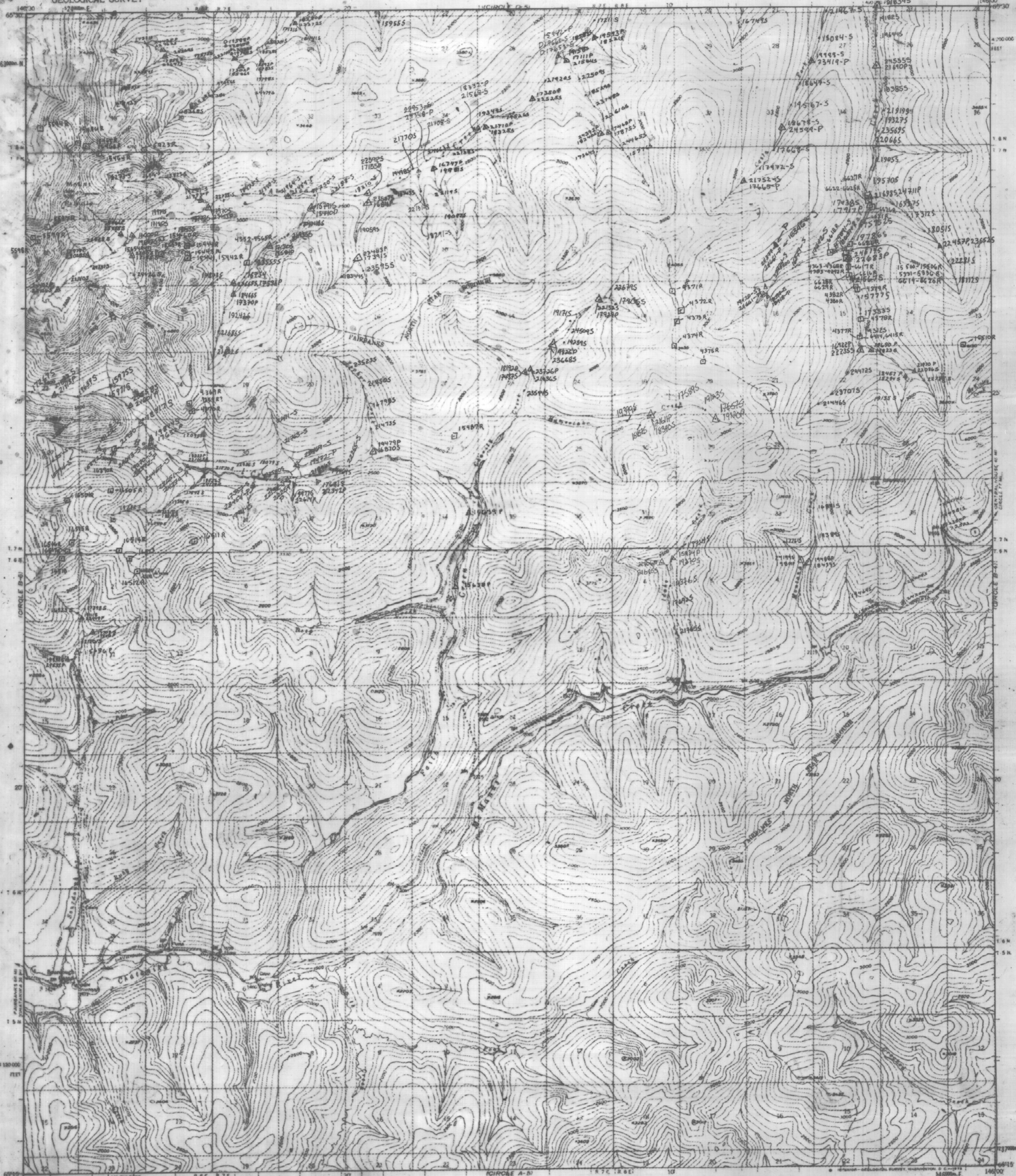
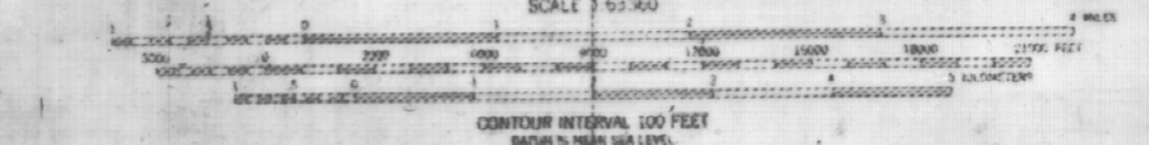


UNITED STATES
DEPARTMENT OF THE INTERIOR
GEOLOGICAL SURVEY

CIRCLE (B-5) QUADRANGLE
ALASKA
1:63,360 SERIES (TOPOGRAPHIC)



Mapes, edited, and published by the Geological Survey
Control by USGS and USC&GS
Topography by photogrammetric methods from aerial photographs
taken 1953, field annotated 1954. Map not field checked
Universal Transverse Mercator projection, 1927 North American Datum
10,000-foot grid based on Alaska coordinate system, zone 3
1000-meter Universal Transverse Mercator grid lines,
zone 6, shown in blue
Land lines represent unsurveyed and unmarked locations
determined by the Bureau of Land Management
Foto F7, Fairbanks Meridian



STEESE/WHITE MTS PROJECT ANALYTICAL DATA
CIRCLE B-5 Sample Locations
by Staff, 1986

ROAD CLASSIFICATION
Light duty ----- Unimproved dirt -----
State Route ○
CIRCLE (B-5), ALASKA
N6515-W14600/1930
1954
WASP REVISED 1975

EXPLANATION
○ 197836S stream sediment sample
△ 287949P heavy mineral concentrate
□ 297847K rock geochem sample