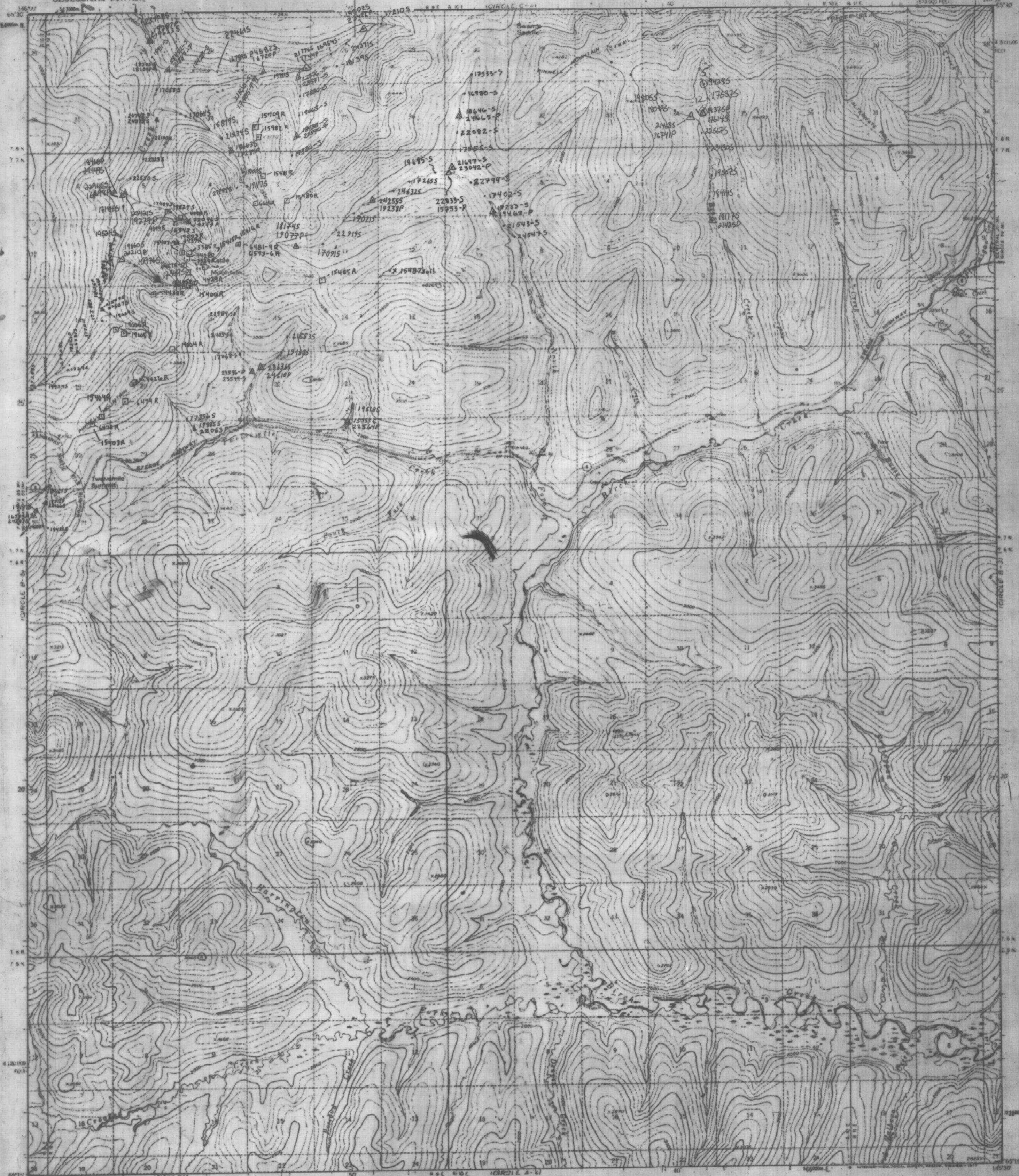


UNITED STATES
DEPARTMENT OF THE INTERIOR
GEOLOGICAL SURVEY

CIRCLE (B-4) QUADRANGLE
ALASKA
1:50,000 SERIES (TOPOGRAPHIC)



Mapped, edited, and published by the Geological Survey
Control by USGS and USC&GS
Topography by photogrammetric methods from aerial photographs
taken 1951, field annotated 1952. Map not field checked
Universal Transverse Mercator projection, 1927 North American datum,
10,000-foot grid based on Alaska coordinate system, zone 3
1000-meter Universal Transverse Mercator grid ticks,
zone 6, shown in blue
Gray lead lines represent uncolored and unmarked locations
pre-determined by the Bureau of Land Management
File T-7 Fairbanks Meridian
Shades, as portrayed, indicate only the water areas
usability of low relief, as interpreted from aerial photographs



STEESSE/WHITE MTS PROJECT ANALYTICAL DATA
CIRCLE B-4 Sample Locations

by Staff, 1986

ROAD CLASSIFICATION
Light duty
State Route
QUADRANGLE LOCATION
CIRCLE (B-4), ALASKA
N6915-W14930/15X30
1952
LIMITED REVISIONS 1956

EXPLANATION
• 189367S stream bedrock sample
△ 179687P heavy mineral sample
□ 129784R rock sample