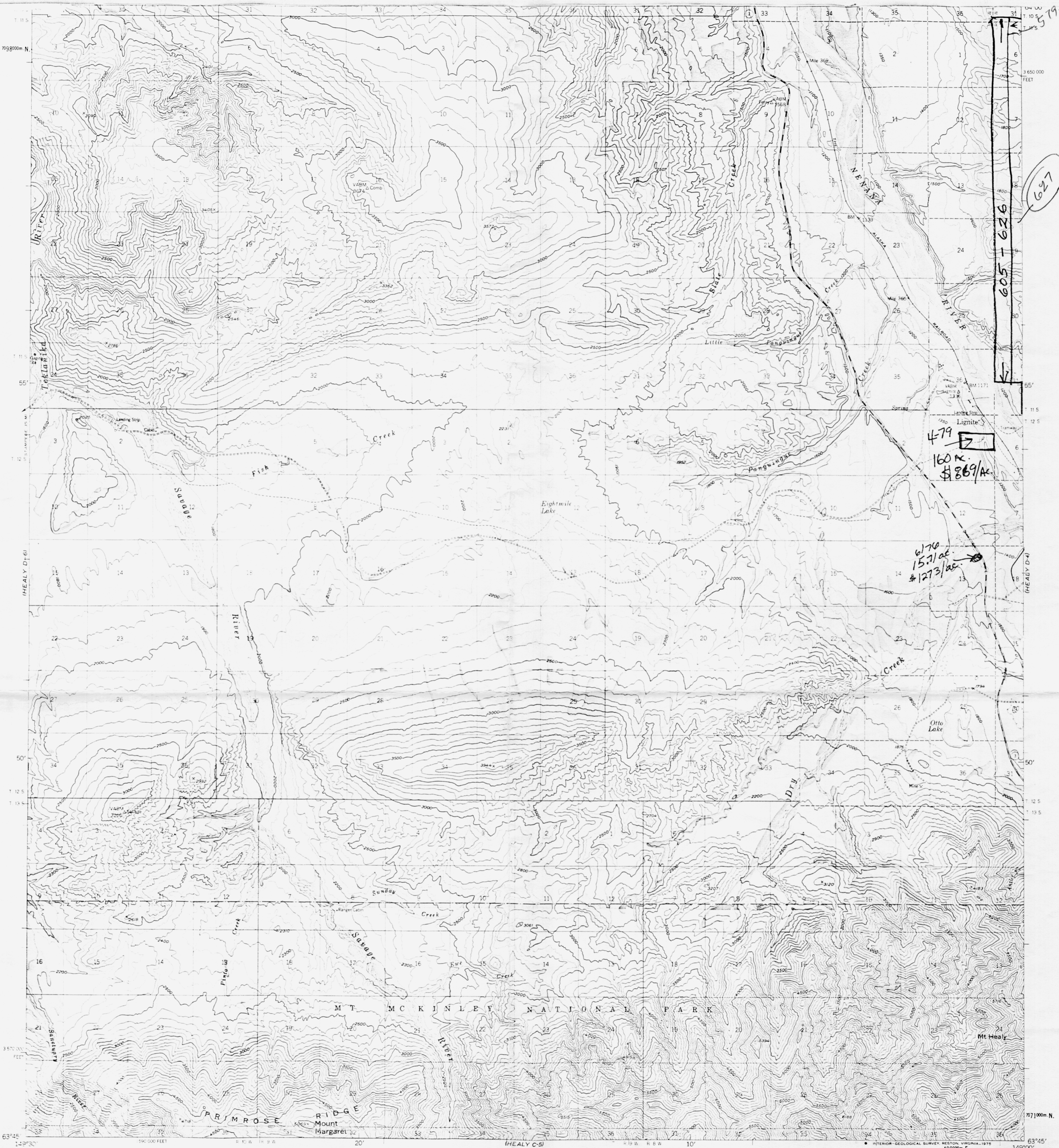


627

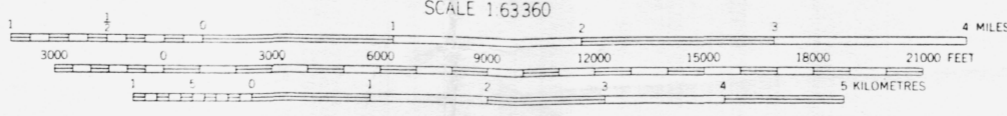
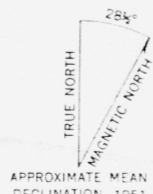
605 + 626

479
160 ac.
\$869/ac

6176
15.71 ac.
\$1273/ac



Maped, edited, and published by the Geological Survey
Control by USGS and USC&GS
Topography by photogrammetric methods from aerial photographs
taken 1949; field annotated 1951. Map not field checked
Universal Transverse Mercator projection, 1927 North American datum
1:250,000-foot grid based on Alaska coordinate system, zone 4
1:250,000-metre Universal Transverse Mercator grid ticks,
zone 6, shown in blue
Dashed and lines represent unsurveyed and unmarked
locations predetermined by the Bureau of Land Management
File # 10, Fairbanks Meridian



CONTOUR INTERVAL 100 FEET
DOTTED LINES REPRESENT 50 FOOT CONTOURS
NATIONAL GEODETIC VERTICAL DATUM OF 1929



ROAD CLASSIFICATION
Medium-duty ———— Unimproved dirt - - - - -
State Route ○

HEALY (D-5), ALASKA
N6345-W14900/15X30

1951
MINOR REVISIONS 1973

FOR SALE BY U. S. GEOLOGICAL SURVEY
FAIRBANKS, ALASKA 99701, DENVER, COLORADO 80225, OR RESTON, VIRGINIA 22092
A FOLDER DESCRIBING TOPOGRAPHIC MAPS AND SYMBOLS IS AVAILABLE ON REQUEST