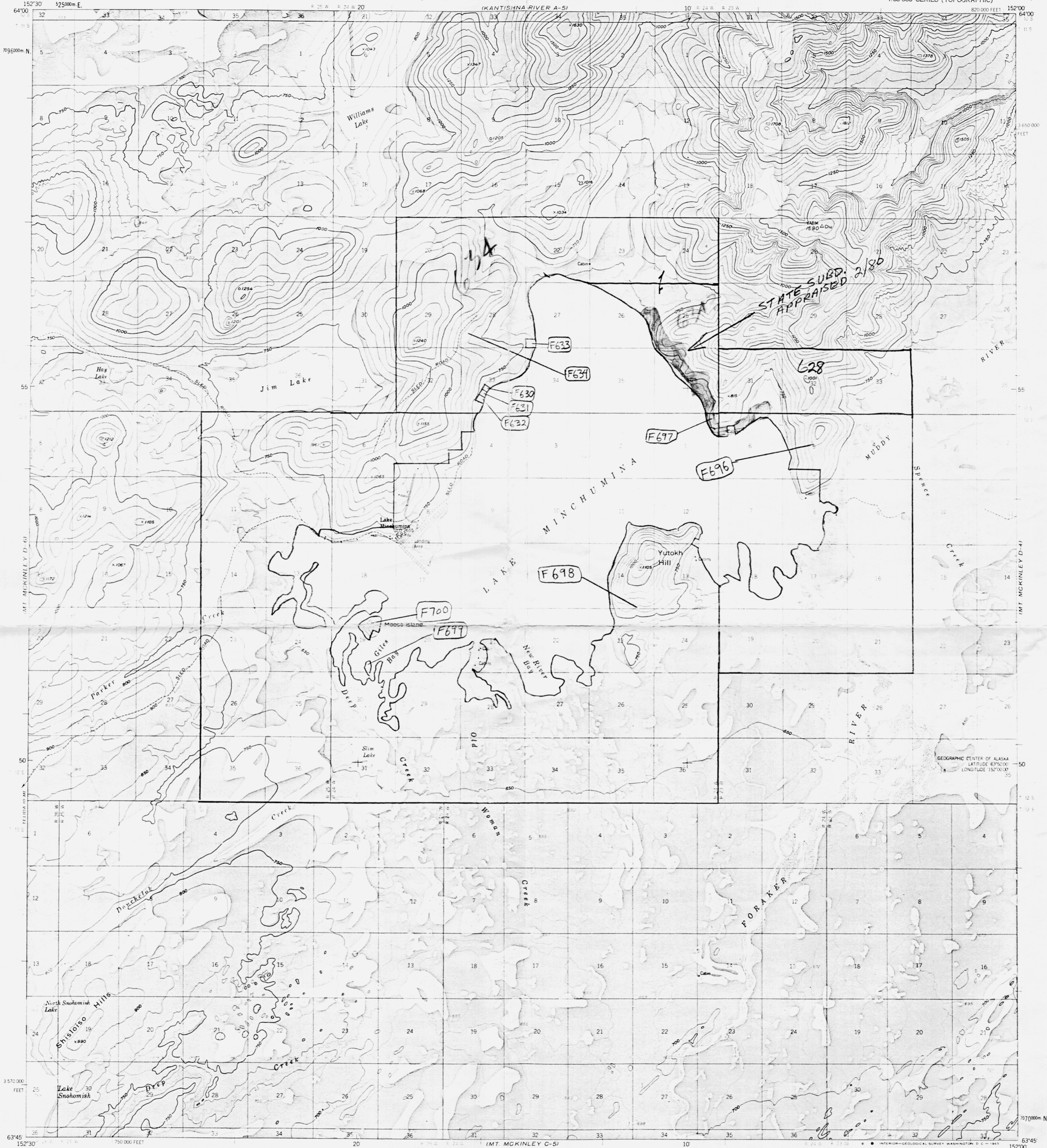


SH29

UNITED STATES  
DEPARTMENT OF THE INTERIOR  
GEOLOGICAL SURVEY

MT. MCKINLEY (D-5) QUADRANGLE  
ALASKA  
1:63 360 SERIES (TOPOGRAPHIC)



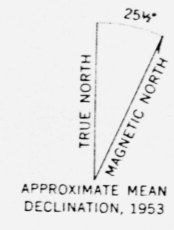
Mapped, edited, and published by the Geological Survey

Control by USGS and USC&GS  
Topography by photogrammetric methods from aerial photographs  
taken 1952. Field annotated 1953. Map not field checked.

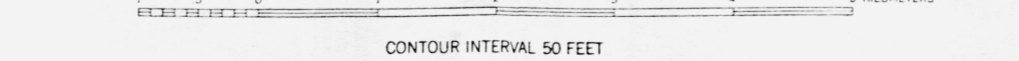
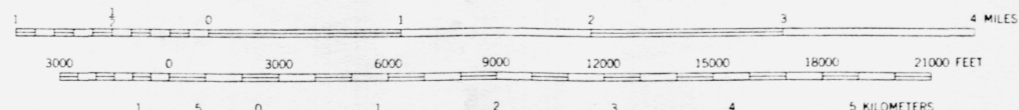
Universal Transverse Mercator projection, 1927 North American datum  
10 000 foot grid based on Alaska coordinate system, zone 5  
1000 meter Universal Transverse Mercator grid ticks,  
zone 5, shown in blue.

Land lines represent unsurveyed and unmarked locations  
determined by the Bureau of Land Management  
Folio F 11 Fairbanks Meridian

Swamps, as portrayed, indicate only the wetter areas,  
usually of low relief, as interpreted from aerial photographs



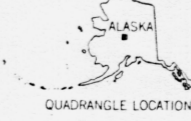
APPROXIMATE MEAN  
DECLINATION, 1953



CONTOUR INTERVAL 50 FEET  
DATUM IS MEAN SEA LEVEL

FOR SALE BY U.S. GEOLOGICAL SURVEY  
FAIRBANKS, ALASKA, DENVER 25, COLORADO OR WASHINGTON 25, D.C.  
A FOLDER DESCRIBING TOPOGRAPHIC MAPS AND SYMBOLS IS AVAILABLE ON REQUEST

ROAD CLASSIFICATION  
Light-duty



MT. MCKINLEY (D-5), ALASKA  
N6345-W15200/15X30

1953  
MINOR REVISIONS 1964