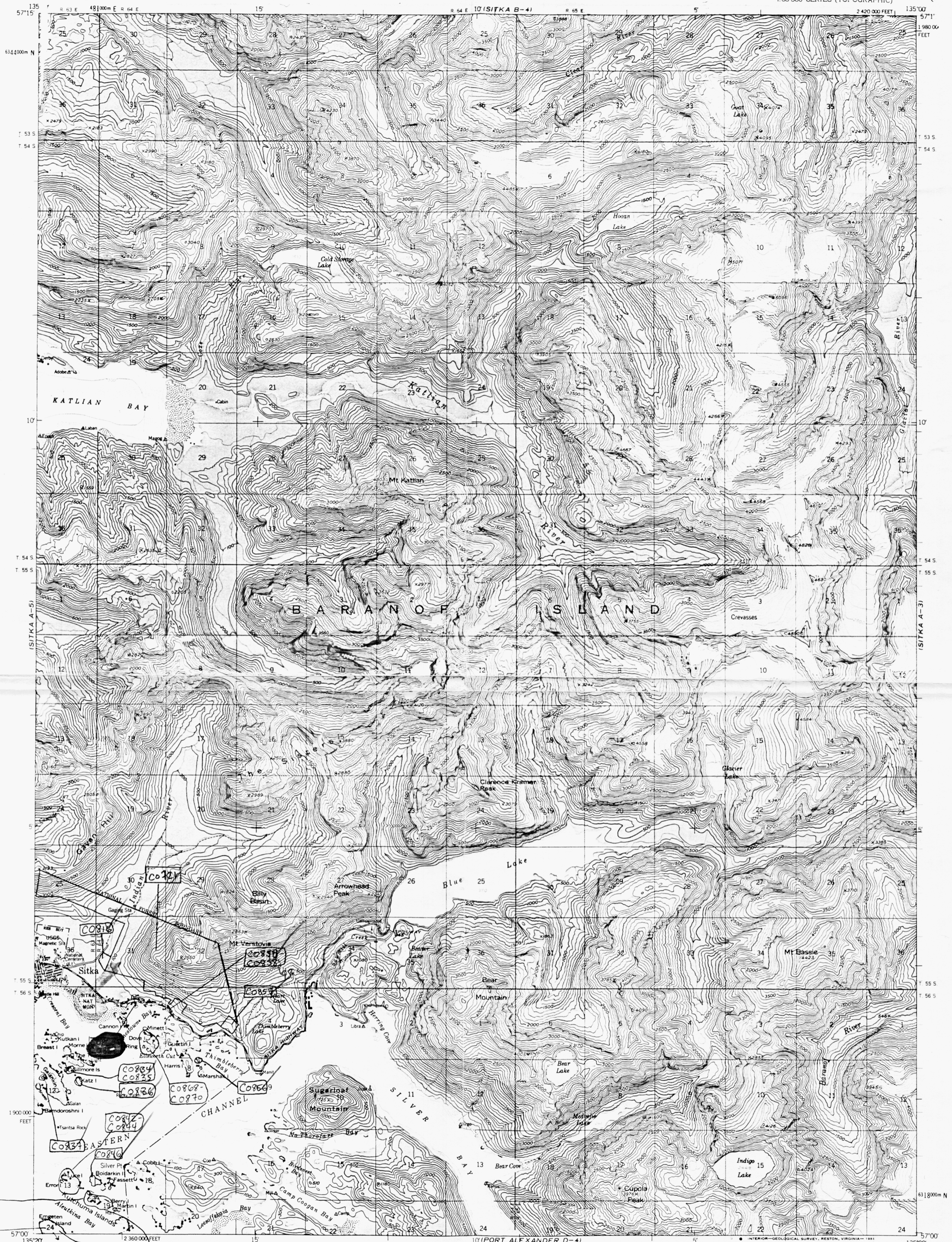
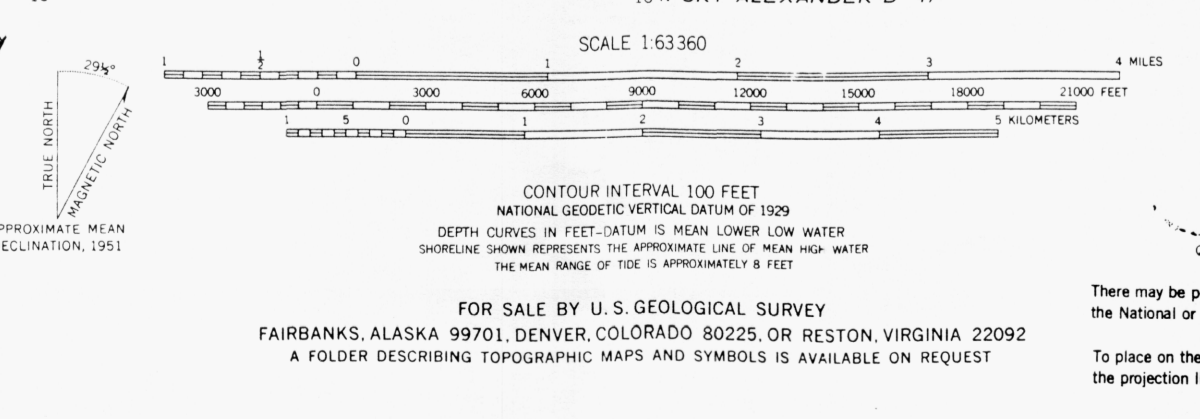


5437



Mapped, edited, and published by the Geological Survey
Control by USGS and USC&GS
Topography by photogrammetric methods from aerial photographs
taken 1948, field annotated 1951. Map not field checked
Selected hydrographic data compiled from USC&GS Charts
1244 (1952), 8255 (1948), and 8281 (1960). This information
is not intended for navigational purposes
Universal Transverse Mercator projection, 1927 North American datum
10,000 foot grid based on Alaska coordinate system, zone 1
1000-meter Universal Transverse Mercator grid ticks,
zone 8, shown in blue
Land lines represent unsurveyed and unmarked locations
predetermined by the State of Alaska, Division of Lands,
Copper River Meridian
Entire land area is within the Tongass National Forest
except Sitka exclusion area
Lake elevations are unchecked



ROAD CLASSIFICATION
Medium-duty — Light-duty
SITKA (A-4), ALASKA
N5700—W13500/15X20
1951
LIMITED REVISIONS 1975
There may be private inholdings within the boundaries of
the National or State reservations shown on this map
To place on the predicted North American Datum 1983 move
the projection lines 42 meters north and 108 meters east

FOR SALE BY U. S. GEOLOGICAL SURVEY
FAIRBANKS, ALASKA 99701, DENVER, COLORADO 80225, OR RESTON, VIRGINIA 22092
A FOLDER DESCRIBING TOPOGRAPHIC MAPS AND SYMBOLS IS AVAILABLE ON REQUEST