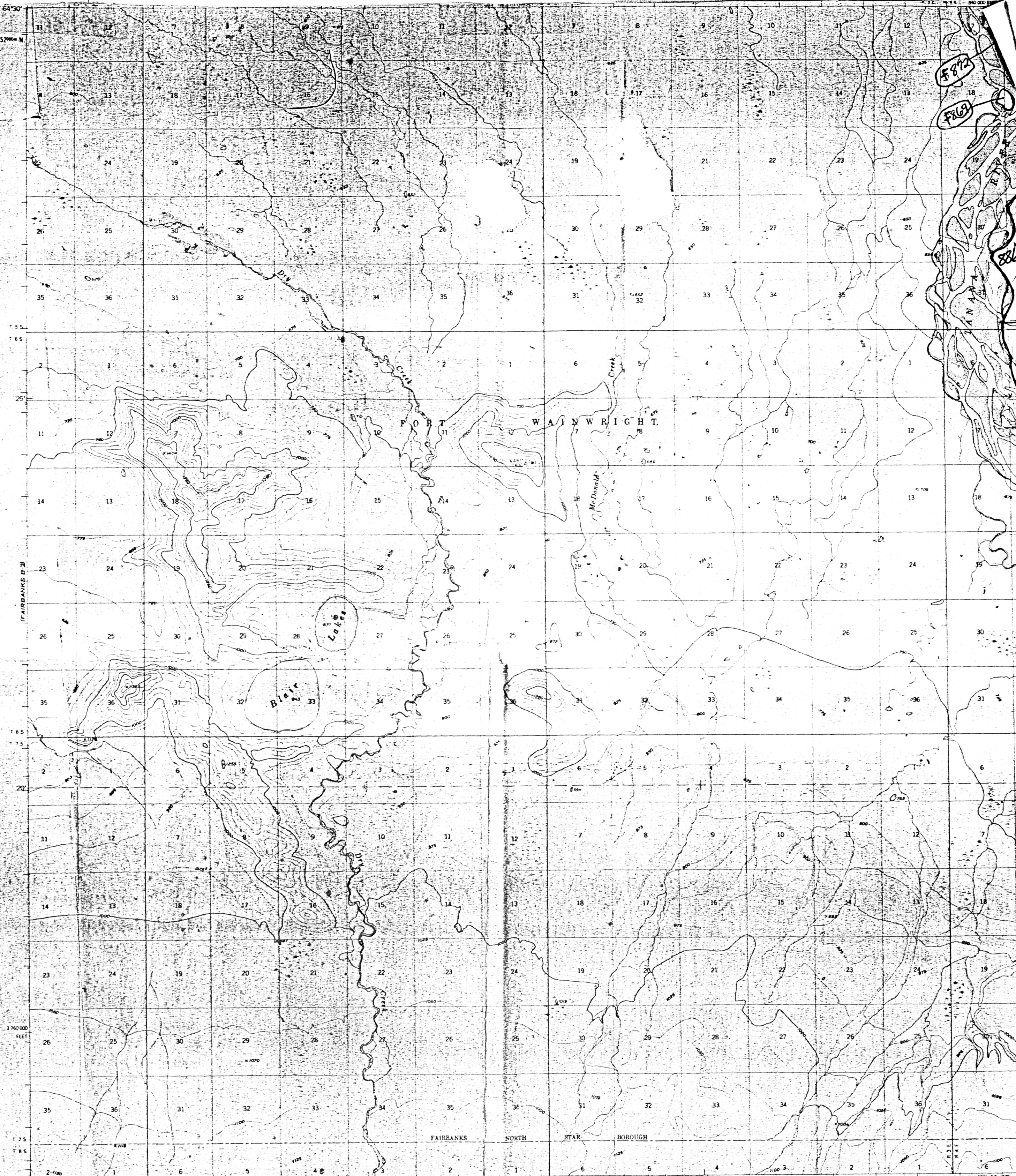
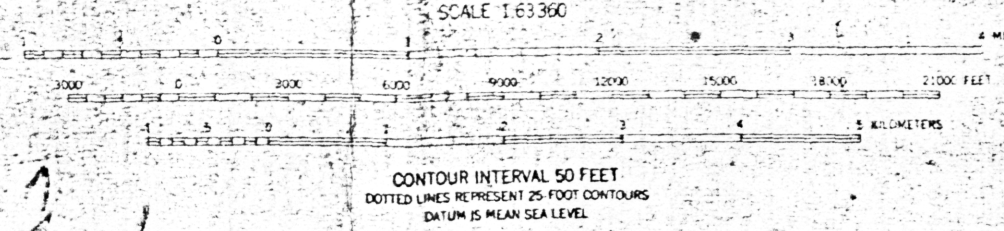
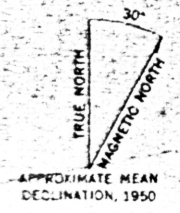


5H60



Mapped, edited, and published by the Geological Survey
 Control by USGS and USCGS
 Topography by photogrammetric methods from aerial photographs
 taken 1949, field annotated 1950. Map not field checked
 Universal Transverse Mercator projection, 1927 North American datum
 10,000 foot grid based on Alaska coordinate system, zone 3
 1000 meter Universal Transverse Mercator grid ticks,
 zone 6, shown in blue
 Land lines represent unsurveyed and unmarked locations
 predetermined by the Bureau of Land Management
 Folio F-9, Fairbanks, Alaska
 Swamps as portrayed indicate only the wetter areas
 usually of low relief, as interpreted from aerial photographs



FAIRBANKS (B-1), ALASKA
 N6415-W14700/15X30

FOR SALE BY U. S. GEOLOGICAL SURVEY
 FAIRBANKS, ALASKA 99701, DENVER, COLORADO 80225, OR WASHINGTON, D. C. 20242
 A FOLDER DESCRIBING TOPOGRAPHIC MAPS AND SYMBOLS IS AVAILABLE ON REQUEST

ROAD CLASSIFICATION
 Unimproved dirt

1950
 GEOL. SURV. ALASKA