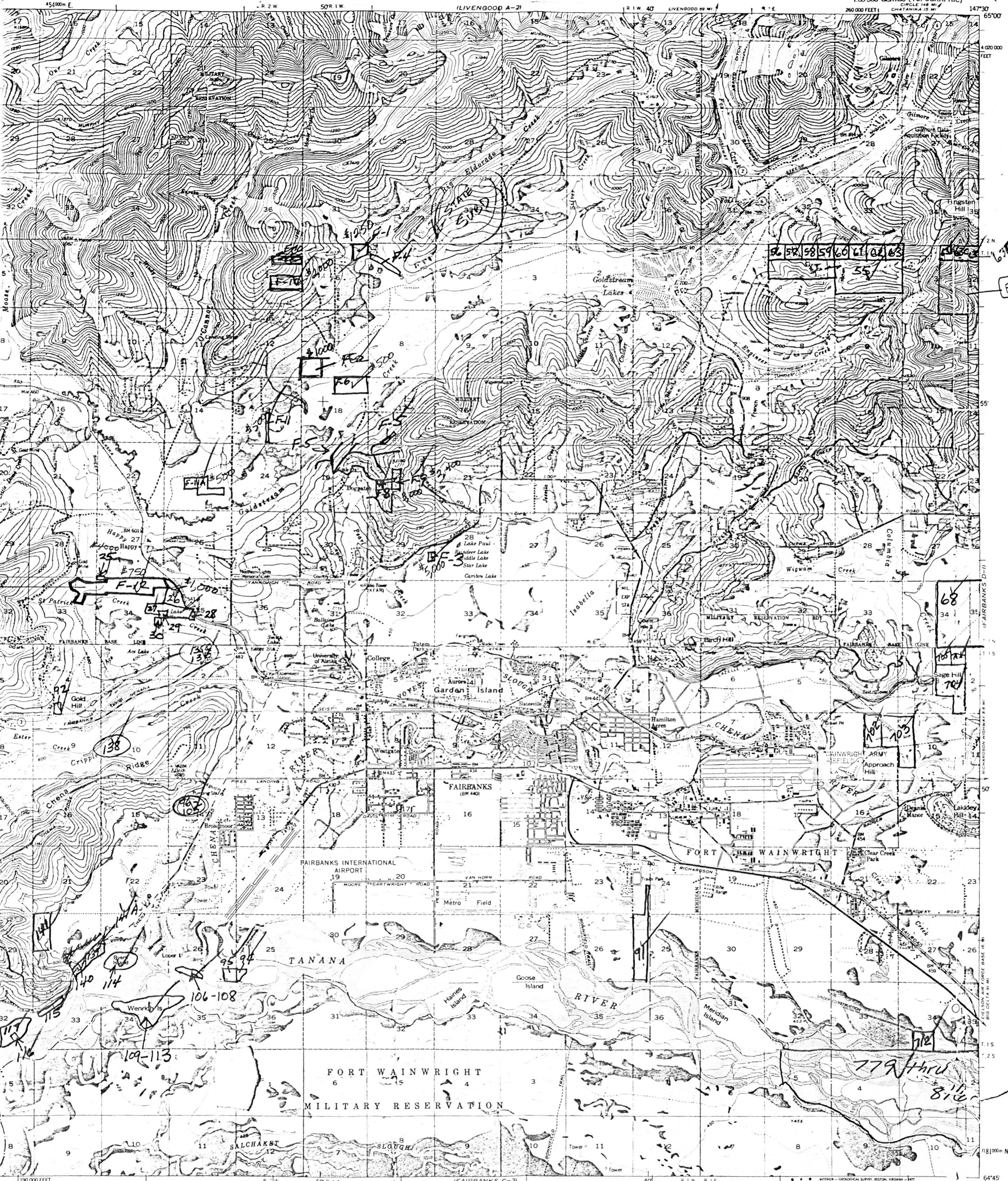


2,3,4,5,6, 8,9

SH64

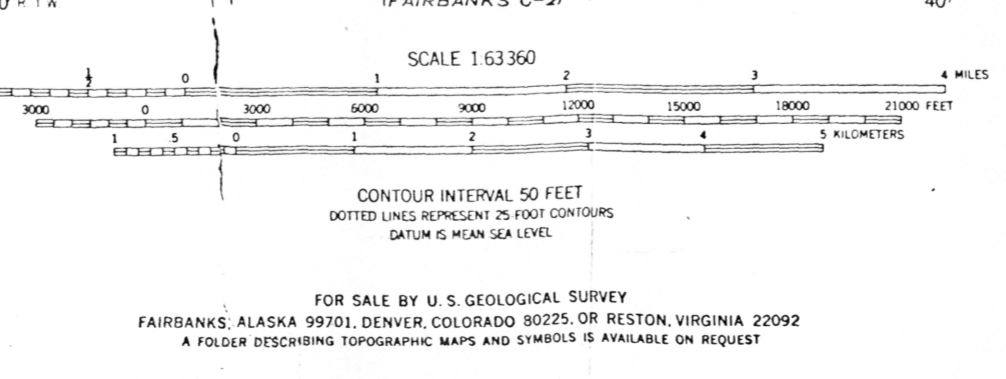
UNITED STATES
DEPARTMENT OF THE INTERIOR
GEOLOGICAL SURVEY

FAIRBANKS (D-2) QUADRANGLE
ALASKA-NORTH STAR BOROUGH
1:63 360 SERIES (TOPOGRAPHIC)



Mapped, edited, and published by the Geological Survey
Control by USGS, USC&GS and USCE
Topography by photogrammetric methods from aerial photographs
taken 1949. Culture revised 1955 from aerial photographs taken 1954.
Map not field checked.
Universal Transverse Mercator projection, 1927 North American datum
10,000 foot grid based on Alaska coordinate system, zone 3
1000 meter Universal Transverse Mercator grid ticks,
zone 6, shown in blue
Gray land lines represent unsurveyed and unmarked locations
predetermined by the Bureau of Land Management
Folios F-6, F-7, F-9, and F-10, Fairbanks Meridian
Swamps, as portrayed, indicate only the wetter areas,
usually of low relief, as interpreted from aerial photographs
Red tint indicates areas in which only landmark buildings are shown

Revised shown in purple compiled from aerial photograph
taken 1972 and 1975. This information not field checked
Purple tint indicates extension of urban areas



ROAD CLASSIFICATION
Heavy-duty ——— Light-duty ———
Medium-duty ——— Unimproved dirt ———
○ State Route
FAIRBANKS (D-2), ALASKA
N6445-W14730/15X30
1954
PHOTOREVISED 1972 AND 1975