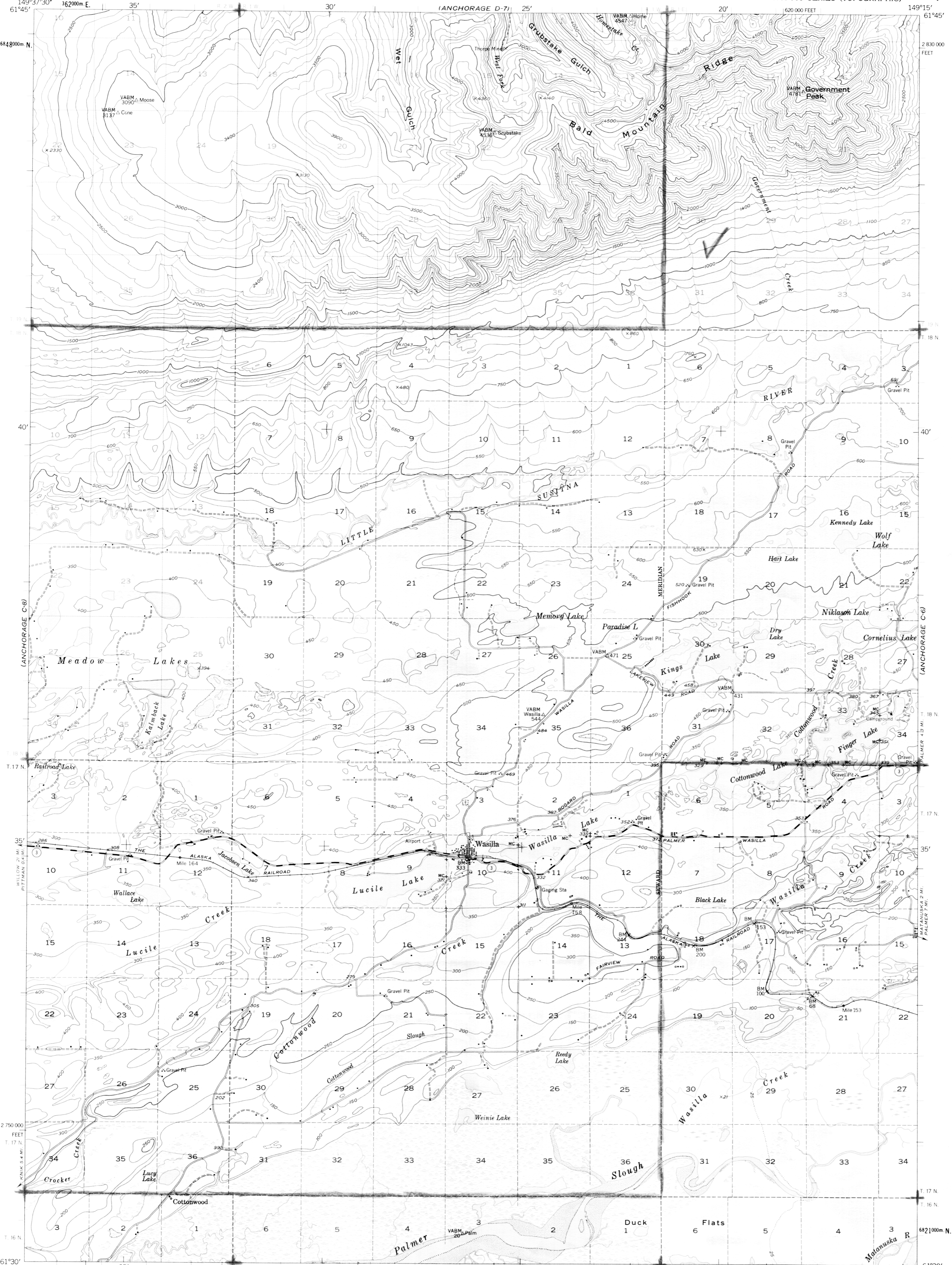
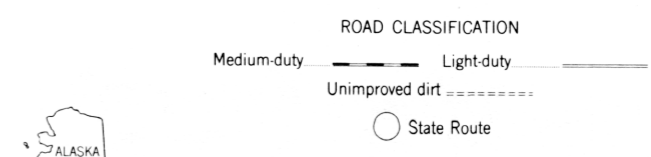
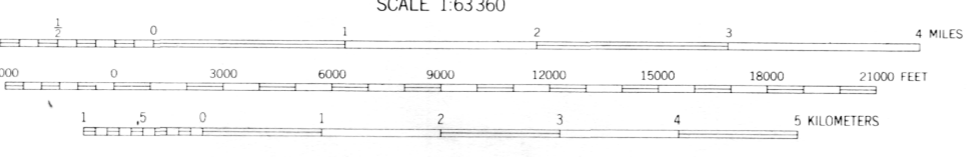
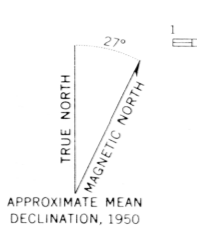


PDF 87-33  
-SH6



Mapped, edited, and published by the Geological Survey  
Control by USGS, USC&GS and USCE  
Topography by photogrammetric methods from aerial photographs  
taken 1949, field annotated 1950. Map not field checked  
Universal Transverse Mercator projection, 1927 North American datum  
10,000 foot grid based on Alaska coordinate system, zone 4  
1000 meter Universal Transverse Mercator grid ticks,  
zone 6, shown in blue  
Land lines printed in gray represent unsurveyed and unmarked  
locations predetermined by the Bureau of Land Management  
Folios S-1, S-2, S-13 and S-14, Seward Meridian  
Swamps, as portrayed, indicate only the wetter areas,  
usually of low relief, as interpreted from aerial photographs



FOR SALE BY U. S. GEOLOGICAL SURVEY  
FAIRBANKS, ALASKA DENVER 25, COLORADO WASHINGTON 25, D. C.  
A FOLDER DESCRIBING TOPOGRAPHIC MAPS AND SYMBOLS IS AVAILABLE ON REQUEST

ANCHORAGE (C-7), ALASKA  
N6130-W14915/15X22.5  
1950  
MINOR REVISIONS 1962