

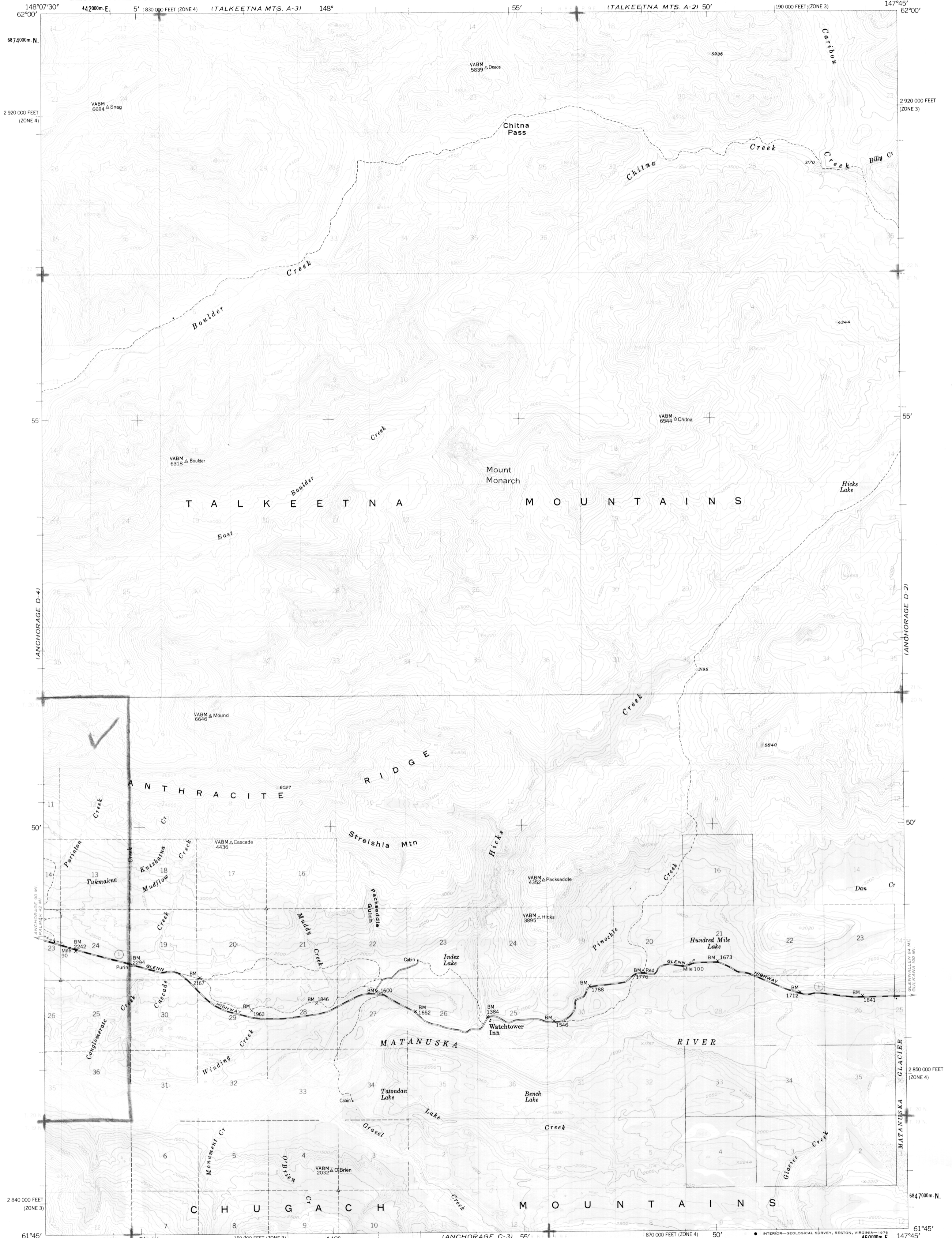
TALKEETNA MTS. A-3

TALKEETNA MTS. A-2

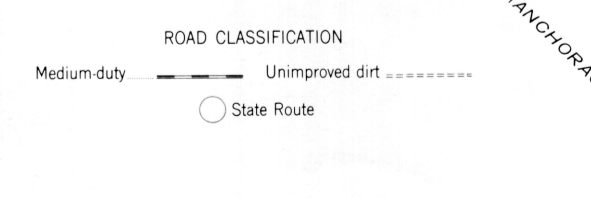
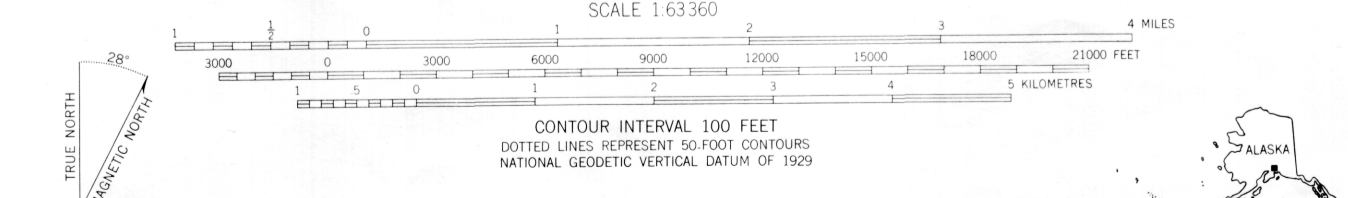
UNITED STATES DEPARTMENT OF THE INTERIOR GEOLOGICAL SURVEY

ANCHORAGE (D-3) QUADRANGLE ALASKA - MATANUSKA - SUSITNA BOROUGH 1:63 360 SERIES (TOPOGRAPHIC)

PDF 87-33 -548



Mapmed, edited, and published by the Geological Survey Control by USGS and USC&GS. Topography by photogrammetric methods from aerial photographs taken 1948, field annotated 1948. Map not field checked. Universal Transverse Mercator projection, 1927 North American datum 10,000 foot grids based on Alaska coordinate system, zones 3 and 4 1000-metre Universal Transverse Mercator grid ticks, zone 6, shown in blue. Gray land lines represent unsurveyed and unmarked locations determined by the Bureau of Land Management Folio S-1, Seward Meridian. Swamps, as portrayed, indicate only the wetter areas, usually of low relief, as interpreted from aerial photographs.



FOR SALE BY U.S. GEOLOGICAL SURVEY FAIRBANKS, ALASKA 99701, DENVER, COLORADO 80225, OR RESTON, VIRGINIA 22092 A FOLDER DESCRIBING TOPOGRAPHIC MAPS AND SYMBOLS IS AVAILABLE ON REQUEST

ANCHORAGE (D-3), ALASKA N6145-W14745/15X22.5 1948 MINOR REVISIONS 1975