

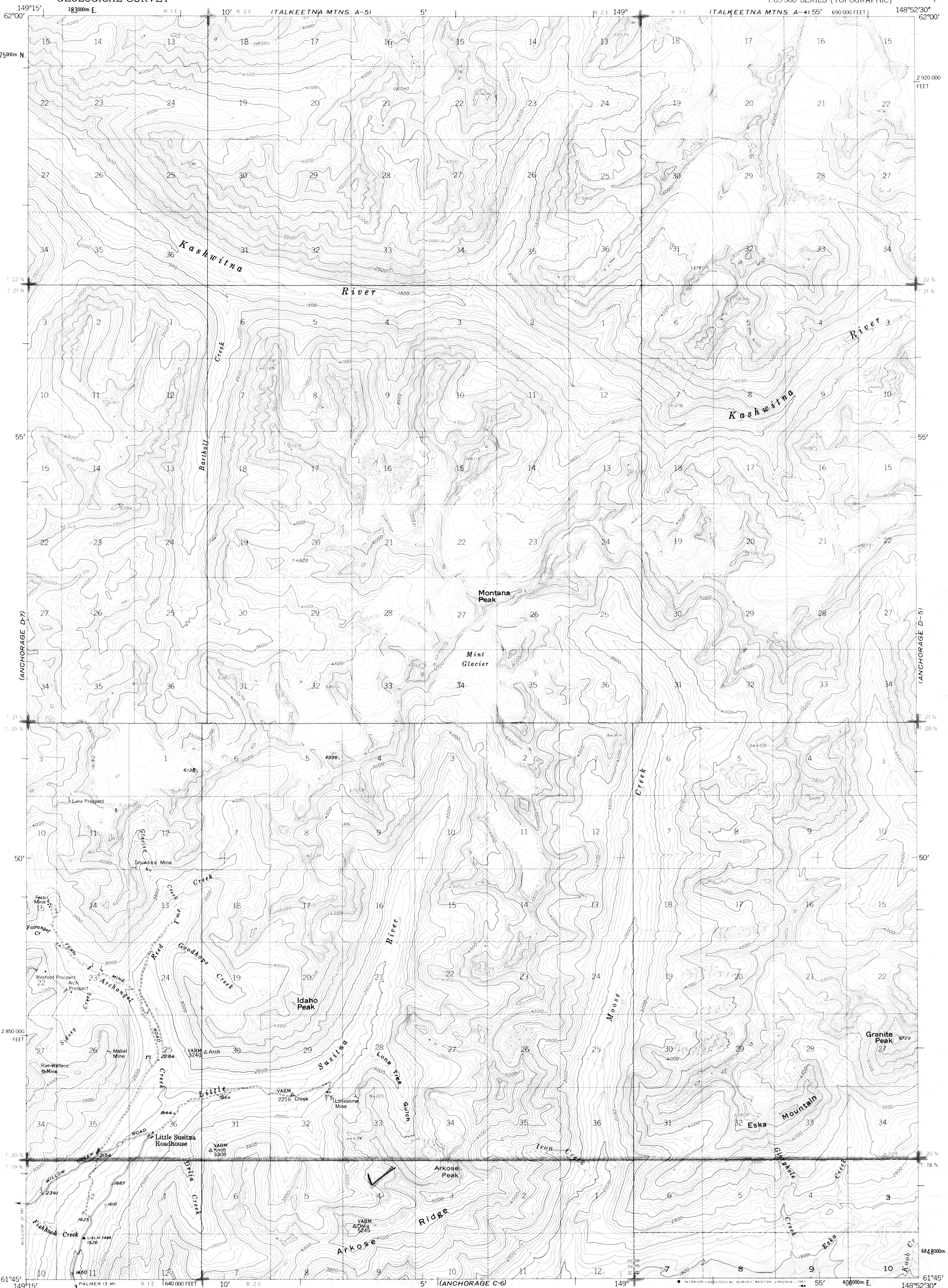
(TALKEETNA  
MTNS. A-5)

UNITED STATES  
DEPARTMENT OF THE INTERIOR  
GEOLOGICAL SURVEY

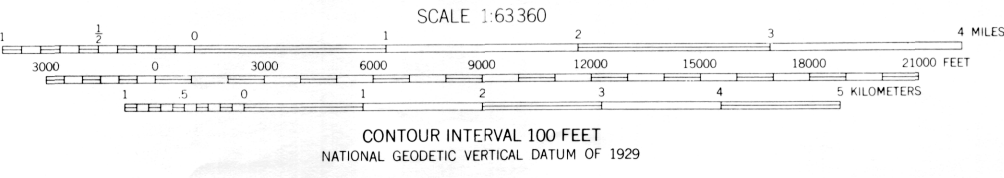
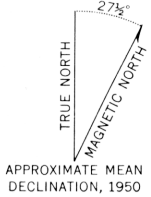
ANCHORAGE (D-6) QUADRANGLE  
ALASKA-MATANUSKA-SUSITNA BOROUGH  
1:63 360 SERIES (TOPOGRAPHIC)

(TALKEETNA  
MTNS. A-5)

PDF 87-33  
-SH11



Mapped, edited, and published by the Geological Survey  
Control by USGS, USC&GS, and USCE  
Topography by photogrammetric methods from aerial photographs  
taken 1949, field annotated 1950. Map not field checked  
Universal Transverse Mercator projection, 1927 North American datum  
10,000-foot grid based on Alaska coordinate system, zone 4  
1000 meter Universal Transverse Mercator grid ticks,  
zone 6, shown in blue  
Gray land lines represent unsurveyed and unmarked locations  
predetermined by the Bureau of Land Management  
Folio S-1, Seward Meridian  
To place on the predicted North American Datum 1983 move  
the projection lines 64 meters north and 118 meters east



ROAD CLASSIFICATION  
Light-duty ——— Unimproved dirt ———



FOR SALE BY U. S. GEOLOGICAL SURVEY  
FAIRBANKS, ALASKA 99701, DENVER, COLORADO 80225, OR RESTON, VIRGINIA 22092  
A FOLDER DESCRIBING TOPOGRAPHIC MAPS AND SYMBOLS IS AVAILABLE ON REQUEST

ANCHORAGE (D-6), ALASKA  
N6145-W14852.5/15X22.5  
1950  
MINOR REVISIONS 1980